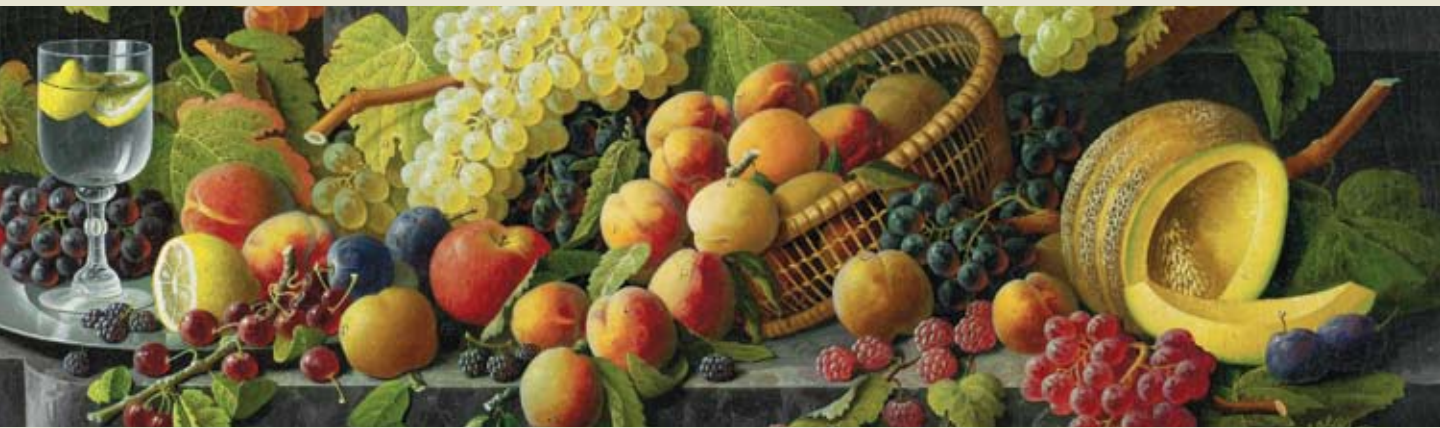




## A REMARKABLE YEAR



## Minneapolis Institute of Arts



## Annual Report 2005–2006





The Minneapolis Institute of Arts is dedicated to national leadership in bringing art and people together to discover, enjoy, and understand the world's diverse artistic heritage.



TABLE OF CONTENTS

2	A Remarkable Year
4	A Huge Accomplishment
7	A Grand Gala
10	An Enriched Collection
14	A Memorable Calendar
18	A Warm Welcome
20	An Amazing Impact
22	An Exciting New Era
25	An Enormous Thank-You
26	<i>Bring Art to Life</i> Campaign Commitments
30	Patrons' Circle Gifts
30	Corporate and Foundation Grants
31	Grand Opening Supporters
31	Gifts and Sponsors for Exhibitions and Projects
31	Gifts of Works of Art and Funds for Art Acquisitions
36	Contributors' Circle Members
44	Matching Gift Companies
44	Memorial and Tribute Contributions
48	Named Endowment Funds for Operations and Programs
49	Named Endowment Funds for Works of Art
50	Friends of the Institute
51	New Century Society
52	Gifts by Bequest
52	Honor Roll
56	Financial Statements
57	Officers and Trustees
58	Museum Staff
60	Museum Information

This annual report is for the period from July 1, 2005, through June 30, 2006.  
Please note: Artworks appearing in this report may not always be on public view;  
these works and more are always on view on the museum's Web site, [www.artsmia.org](http://www.artsmia.org).





“Suddenly the MIA has big shoulders. It walks, metaphorically, with the kind of swagger, authority and cultural weight associated with its counterparts in Chicago, Boston and New York. Way too large to be taken in at one visit, the place holds an astonishing amount of top-class art that seems to come from everywhere and everyone.”

—Mary Abbe, *art critic*, Star Tribune, July 16, 2006

## A REMARKABLE YEAR The transformation you helped us achieve

While flipping pancakes at our Grand Opening Celebration in June, I marveled at the people who were standing in line. There were Trustees and museum members, a *Wall Street Journal* reporter, art dealers from New York and London, museum staff and their families, and lots of neighbors, all eager to celebrate our new expansion.

It was a magical moment, and in many ways it crystallized a remarkable year.



Severin Roesen, American (b. Germany) c. 1815-71,  
*Abundant Fruit*, c. 1858, oil on canvas,  
gift of Don and Diana Lee Lucker

It's amazing to think of all we accomplished in Fiscal Year 2005-06: the completion of our new wing, the reinstallation of virtually every gallery, new acquisitions for the permanent collection, superb exhibitions, inspiring tours, and top-notch educational programs. The list goes on and on.

These achievements were the culmination of years of careful planning and hard work. Indeed, they embody the collective vision of the museum's Trustees and staff, and position us to achieve an even higher level of service to our community.

The MIA is one of the only major American museums to offer free general admission. This is vitally important to our mission. But in order for us to continue to grow, we must find ways to expand our membership, engage the next generation of community leaders, and work more closely than ever with our philanthropic partners.

One crucial component of our plan for the future is completion of our *Bring Art to Life* Campaign. We could not be more grateful for the extraordinary generosity of our donors, but we continue to seek your support.

This is an exhilarating time for us. Thank you for being part of it.

William M. Griswold  
*Director and President*

Top: Cutting the ribbons for the MIA's Grand Opening on June 11 are (from left): Minneapolis 6th Ward Councilmember Robert Lilligren; Lydia O'Callaghan, on behalf of Whittier neighborhood; Minneapolis Mayor R. T. Rybak; MIA Director and President William Griswold; MIA Board Chair Alfred Harrison; Minneapolis Park and Recreation Commissioner and MIA Trustee Mary Merrill Anderson; and Minneapolis Park and Recreation Board Vice President Tracy Nordstrom.





“Unflashy simplicity. ...The new wing is respectful of the museum’s pre-existing facilities and hospitable to its art.”

—Lee Rosenbaum, *The Wall Street Journal*, July 18, 2006



## A HUGE ACCOMPLISHMENT The expansion you helped us complete

The capstone of a very busy year was the opening of the Target Wing—and with it 34 new galleries—in June 2006, on time and on budget.

Designed by Michael Graves, the new structure seamlessly joins the museum’s original 1915 McKim, Mead, and White building and our last major expansion, designed in the mid-1970s by Kenzo Tange. The Target Wing—so named in recognition of Target’s lead gift to the *Bring Art to Life* Campaign—gives the museum 113,000 square feet of new space, and has made possible the renovation of another 49,000 square feet formerly allocated to back-of-house functions in our pre-existing buildings.

Thanks to our expansion, every curatorial department has more space in which to display more of its collection than ever before.

We have a new library; new study rooms for drawings, prints, and photographs; and a new classroom, designated the Friends Community Room in recognition of the Friends’ generous contribution to the *Bring Art to Life* Campaign.

Upstairs, there are more than a dozen new galleries of twentieth-century and contemporary art. We now have spectacular new galleries dedicated to Cubism, Fauvism, German Expressionism, Surrealism, Pop, Op, and even contemporary art. We have, for the first time, designated galleries for the display of textiles, craft, and twentieth-century works on paper. There’s a new gallery for artist’s books, and another for contemporary photographs. And we have new or newly installed galleries for Japanese as well as African, Oceanic, and Native American art; for Islamic art; for Chinese export porcelain; and for special exhibitions.

Furthermore, we’ve re-installed our entire collection of old master paintings. We’ve expanded our installation of ancient art and silver. And we’ve allocated 20,000 square feet of space to our remarkable holdings of Chinese art, now considered to be among the finest in the world.

Unquestionably, the recent expansion will have a profound and enduring impact on the MIA for generations to come.



Top right: Ishida Yūtei, Japanese (1721–86), Edo period, *Flock of Cranes*, a pair of six-panel folding screens; ink, gold, and color on gilded paper; lent by the Mary and Jackson Burke Foundation



“While we are on the subject of spectacular, that is the word for the entire weekend.  
The museum is a wonder and Minneapolis is a revelation.”

—Julie Tobey, collector, New York



## A GRAND GALA The celebration you helped us host

A new building and countless new opportunities to connect with art and engage with the community are cause for celebration. And celebrate we did!

Many of you took part in our Grand Opening Celebration events, so you'll certainly remember the glorious weekend.

Here's a quick recap of the festivities:

On Friday, June 9, more than 200 guests attended a cocktail party for out-of-town collectors, dealers, and museum professionals. On Saturday evening, nearly 900 people came to dinner. And afterward, some 4,000 members and guests participated in the First Night Frolic.

At our public opening on Sunday, June 11, Minneapolis Mayor R. T. Rybak, Miss Minnesota 2006 Dottie Cannon, and William M. Griswold, MIA Director and President, flipped pancakes for 600 early birds.

Then, at 11 a.m., a delegation cut the ribbon before a large and enthusiastic crowd in Target Park—after which almost 9,000 people visited the galleries, while thousands more took advantage of activities organized in Washburn Fair Oaks Park. Altogether, nearly 6,000 people had visited the special exhibition, “The Surreal Calder,” by closing time on Sunday afternoon.

That the museum was able to pull this off without a hitch is a great credit to the entire staff. And our collective gratitude also goes to all those who have been so supportive—the Trustees, our Grand Opening Gala committee, our campaign donors, our corporate partners, our members, and our volunteers. We couldn't have done it without you!

Right: Roberta Mann-Benson, Grand Opening Gala Chair.

Left and lower right: The Gala kicked off a weekend of celebrations attended by more than 15,000 people.







Large photo on right:  
Minneapolis Mayor R.T. Rybak, MIA Director and President  
William Griswold, and Miss Minnesota USA 2006 Dottie Cannon  
serve up flapjacks to 600 Grand Opening Celebration early birds.

Other photos: A sampling of guest experiences at the June 11  
public opening of the MIA expansion.



“The MIA’s expansion has had a ripple effect throughout the building. Every gallery has been reorganized, the art re-hung. As a result, the paintings, sculpture, and prints that adorn the MIA’s now 143 galleries seem to breathe more easily.”

—Marianne Combs, Minnesota Public Radio, June 8, 2006

## AN ENRICHED COLLECTION The world-class artworks you helped us acquire

Always at the core of our mission is the permanent collection, which is growing steadily, thanks to the extraordinary generosity of our donors.

During the past year, the museum acquired 651 outstanding objects. Just a few highlights are included here.

Among our recent acquisitions, the *Comtesse d’Egmont Pignatelli in Spanish Costume* by Alexander Roslin, painted in 1763, has garnered significant attention as the MIA’s first great rococo portrait.

Other notable additions to the collection of paintings include:

- A magnificent large still life, *Abundant Fruit*, c. 1858, by the nineteenth-century American painter Severin Roesen. This picture, a gift from Don and Diana Lee Lucker, greatly strengthens our holdings of American paintings. (See page 2.)
- *Dear Diary—Never Since We Left Prague*, painted in 1955 by the British Surrealist artist Leonora Carrington, a bequest from Maxine and Kalman Goldenberg.

Three acquisitions by the Department of Architecture, Design, Decorative Arts, Craft, and Sculpture reflect the broad purview of its curators:

- A magnificent silver-gilt racing trophy, *The Richmond Race Cup*, designed by Robert Adam and acquired with funds provided by Mary Agnes and Al McQuinn.
- The museum’s first car, a Tatra T-87 four-door sedan, designed in 1936 by Hans Ledwinka and manufactured in Czechoslovakia in 1948, purchased with funds from Regis Foundation. (See front cover.)
- An *omer* counter for the museum’s collection of Judaica, created in 2005 by American sculptor Tobi Kahn, and acquired with the Eloise and Elliot Kaplan Endowment for Judaica.

Our collection of photographs continues to experience dynamic growth, with terrific support from Alfred and Ingrid Lenz Harrison and other generous benefactors, including Trustee Eric Dayton.



Alec Soth, American (b. 1969), *Mother and Daughter*, St. Paul, Minnesota, 1999, chromogenic print, gift of funds from Eric J. Dayton



Alexander Roslin, Swedish (1718–93), *Comtesse d’Egmont Pignatelli in Spanish Costume*, 1763, oil on canvas, The John R. Van Derlip Trust Fund

A masterpiece of French portraiture, the painting retains its original hand-carved frame, which is integral to the work and is an outstanding example of early neoclassical French sculpture.





The Department of Asian Art benefits from the great generosity of Ruth and Bruce Dayton, who have made possible the acquisition of many Chinese objects—most recently, an extraordinary large bronze *sheng-ting*.

In June, the Mary Livingston Griggs and Mary Griggs Burke Foundation made it known that a substantial portion of Mrs. Burke's astonishing collection of Japanese art will eventually come to the MIA. Many loans from the collection were on view at the time of our Grand Opening.

Our holdings of African, Oceanic, and Native American art now include a very fine and unusually early Anishinabe bandolier bag, datable to the 1860s.

And the Department of Textiles acquired a notable group of West African textiles with funds from the Regis Foundation, among other fine objects.

In the years to come, we'll continue our quest to expand the permanent collection, building upon the treasures the museum is now fortunate to hold, thanks to the visionary curators and dedicated donors who secured them.



China, Eastern Chou dynasty, Spring and Autumn period, **sheng-ting**, c. 600 B.C., bronze, gift of Ruth and Bruce Dayton  
Top: Uzbekistan, **women's munisak robe** (detail), c. 1850-75, silk velvet, gift of Guido Goldman

Jacques Villon, French (1875-1963), **Head of a Young Woman**, 1929, drypoint and etching, gift of the Print and Drawing Curatorial Council  
© Artists Rights Society (ARS), New York / ADAGP, Paris

Anishinabe (Ojibwe) Great Lakes/Woodlands, North America, **Bandolier Bag**, 1860s; beads, wool, cotton; gift of funds from Michael Snow and the Tess E. Armstrong Fund

Robert Adam, Scottish (1728-92), **The Richmond Race Cup**, 1767, silver-gilt, made by Daniel Smith and Robert Sharp, London (est. 1763), gift of funds from Mary Agnes and Al McQuinn





## A MEMORABLE CALENDAR The exhibitions you helped us mount

Throughout the year the MIA hosts a diverse and rich spectrum of exhibitions, produced by original curatorial scholarship or through partnerships with other leading art museums in the United States and abroad.

The year's important major loan show was "Villa America: American Moderns, 1900–1950." The show featured more than 85 artworks collected by Myron Kunin, founder of Curtis Galleries and a Life Trustee of the museum.

Another popular show, "Ruth Duckworth, Modernist Sculptor," was accompanied by a beautiful catalogue surveying the artist's fascinating career as a ceramic sculptor.

Many exhibitions have an impact disproportionate to their modest size. One of the high points of 2006 was the installation of an individual loan from the Louvre: Francois Gérard's painting, *Cupid and Psyche* (1798), which is among the undisputed masterpieces of French neoclassicism.

Finally, in concert with the opening of the Target Wing, we inaugurated three important exhibitions:

- "The Surreal Calder" examined the work of the great twentieth-century American sculptor Alexander Calder in the context of paintings and sculpture by his Surrealist contemporaries.
- "From Dürer to Cassatt: Five Centuries of Master Prints from the Jones Collection" comprised many rarely seen masterpieces of five centuries of print-making. The exhibition showcased the Herschel V. Jones Collection, which was presented to the MIA beginning in 1916.
- "Highlights from the Harrison Collection of Fine Photographs" celebrated the incredible impact of the Alfred and Ingrid Lenz Harrison Fund upon the quality and sustained growth of the museum's holdings of work by some of the most important photographers of all time.

Throughout the year, the Minnesota Artists Exhibition Program (MAEP) mounted artist-curated exhibitions of works by contemporary Minnesotan artists. These included a moving tribute to Gus Gustafson, and "The Unicorn in Captivity," featuring large-scale paintings by Alexa Horochowski. Also, an online archive ([www.artsmia.org/maep/wiki](http://www.artsmia.org/maep/wiki)) went live, fostering dialogue about MAEP exhibitions and the arts in Minnesota.



Families enjoy the wonders of Alexander Calder's sculptures on display during "The Surreal Calder."



Above: Associate Curator Jennifer Komar Olivarez (left) leads a group through the "Ruth Duckworth, Modernist Sculptor" exhibition.

Left top: Alexa Horochowski installs her exhibition, "The Unicorn in Captivity," in the Minnesota Artists Exhibition Program (MAEP) gallery.



"I was floored by the quality, the breadth, and the depth of the collections and look forward to being enticed back for many wonderful exhibits.... What treasures you have in Minneapolis, I never knew."

—Jocelyn Kress, collector, New York and Paris

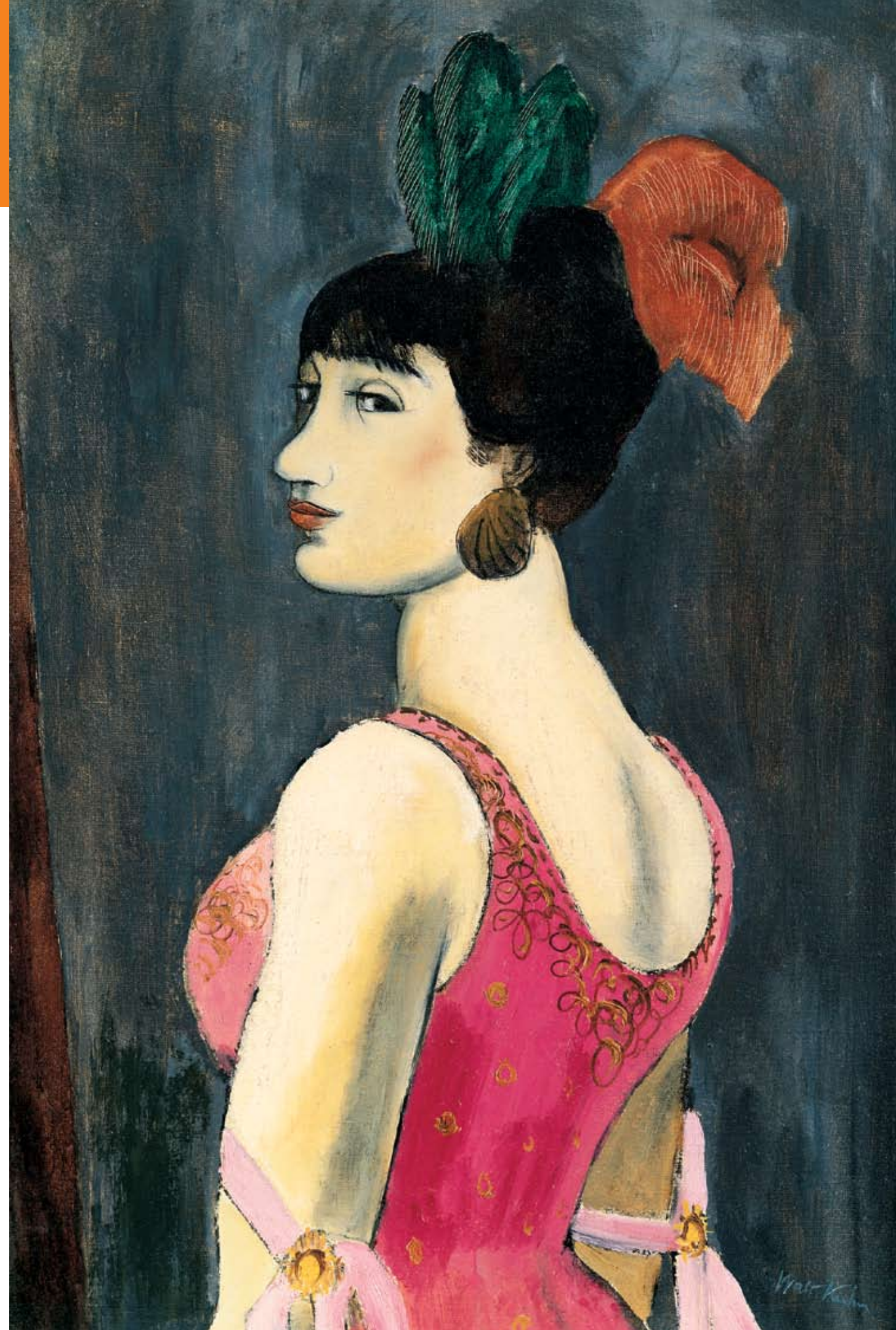


Right:  
Walt Kuhn, American (1877-1949), **Angna Enters**, 1924, oil on canvas, collection of Curtis Galleries, Inc., founder Myron Kunin, from "Villa America: American Moderns, 1900-1950."

Left:  
Marc Riboud, French (b. 1923), **Painter on the Eiffel Tower**, Paris, 1953, gelatin silver print, from "Marc Riboud: Photographing the World, 1953-2005."

Below:  
Baron François Gérard, French (1770-1837), **Cupid and Psyche**, 1798, oil on canvas, on loan from the Musée du Louvre, Paris, from "Cupid and Psyche: Neoclassical Visions of Love."

Below left:  
Francis Jourdain, French (1876-1958), **The White Cat**, c. 1900, color aquatint, gift of Herschel V. Jones, from "From Dürer to Cassatt: Five Centuries of Master Prints from the Jones Collection."





“The new MIA is a splendid place full of significant objects suavely displayed and smartly contextualized. There is exceptional attention to visitor information (lively and accessible) and comfort (cushy sofas and benches everywhere).”

—Mary Abbe, art critic, Star Tribune, July 16, 2006

## A WARM WELCOME The greeting you helped us extend

Deepening our connections with visitors and the broader community is a fundamental goal of the museum. This year we’ve sought innovative ways to engage and welcome audiences, both outside and within the museum.

During the past year, the MIA inaugurated a fresh, colorful new logo, created by design legend Milton Glaser. It now appears prominently on our newly redesigned Web site, which launched in May, as well as on a comprehensive, high-visibility marketing campaign that includes print, television, and online advertisements, appearing in newspapers and magazines throughout the region. We’ve also made significant strides in connecting with MIA visitors via e-mail, alerting a growing list of plugged-in individuals to upcoming activities.

The inviting new face of the MIA extends deep inside the museum. For instance, we recently reconfigured our main lobby to make it more welcoming and attractive. This renovation was part of a museum-wide project supported by Target. The newly redesigned lobby features an improved coat check, free courtesy phones, increased seating, and

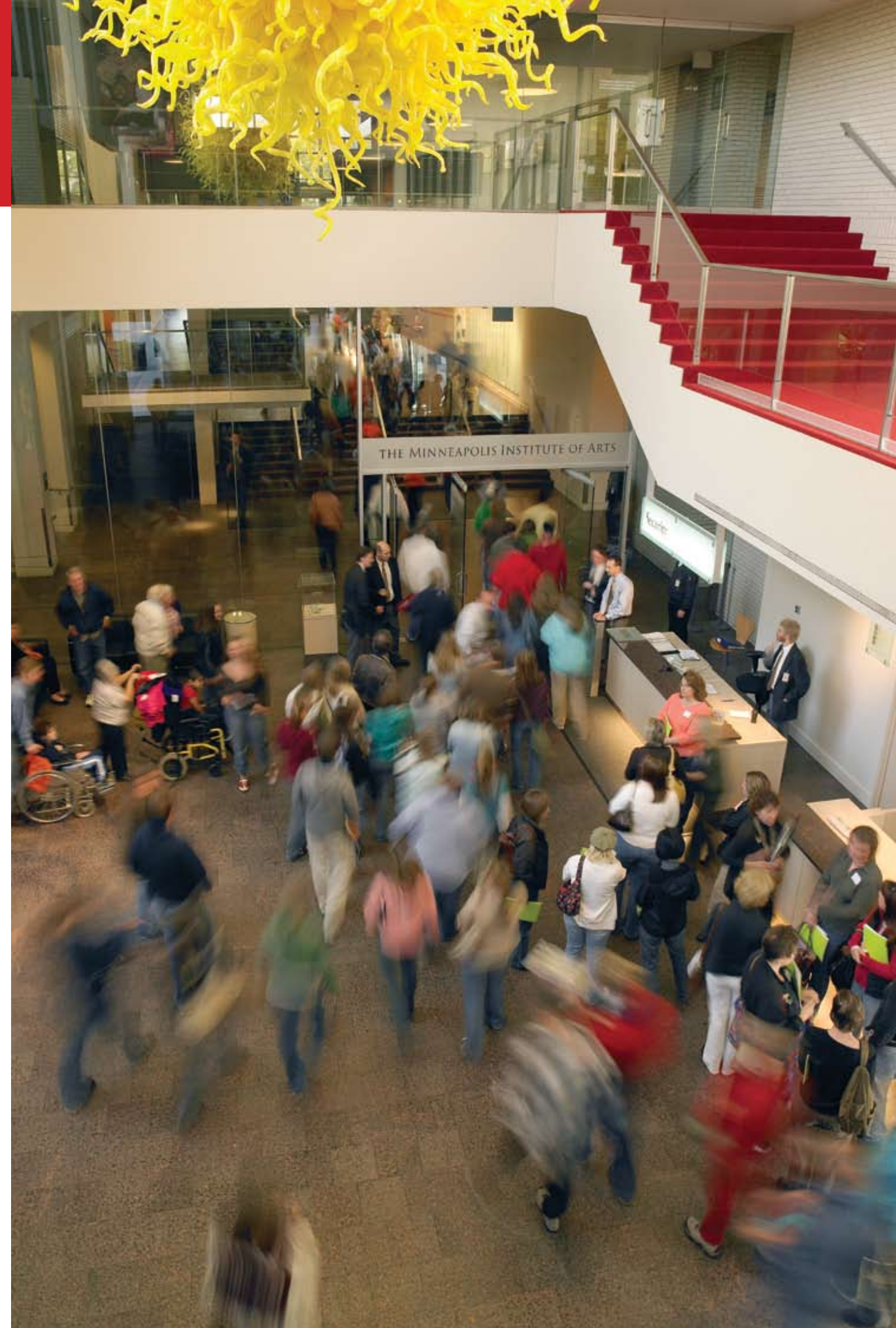
dynamic electronic signage to communicate key information in a lush, image-rich format.

Visitor amenities have likewise expanded. For instance, the Museum Shop now has more space to display and store its wares of unique objects, jewelry, and books. We’ve added to our Quick Stops audio tours, which now cover 900 works of art.

In the galleries, visitors are now able to access a variety of new tools—print and interactive—to learn about and experience art. A new visitors’ map and nine new Interactive Directories give museum-goers convenient ways to plan their visits; eight new Interactive Learning Stations let them delve subjects more deeply; a series of new self-guided tour brochures allows them to explore special topics at their own pace; and new gallery seating offers comfortable places to relax and reflect.

In addition, we installed nine new video screens near works of art, to enhance context and learning. And, as a courtesy to visitors with time constraints, we also ushered in a series of popular gallery talks, debuting with the exhibition “Ruth Duckworth, Modernist Sculptor,” along with 20-minute “spotlight” tours that focus on a single object in the collection.

Finally, we conducted visitor experience workshops for our entire staff and volunteers to ensure the highest possible level of courtesy and service for museum visitors.



Right: The museum’s Third Avenue lobby fills with students and visitors all year long.





“I love the MIA. I would never have felt this way without [Collection in Focus] training. The MIA became a warm, friendly place of learning and beauty for me. Now I have a sense of ownership and I can’t wait to invite friends and loved ones to my own tours!”

—Amoké Kubat, volunteer tour guide

## AN AMAZING IMPACT The love of art you helped us foster

We welcomed 406,460 visitors in Fiscal Year 2005–06. With the opening of the Target Wing in June, the museum proved to be a hotspot destination. In the years ahead, we plan for robust growth of our audience—in numbers and diversity. Free admission remains essential in connecting visitors to all the MIA offers.

As schools struggle with reduced funding for the arts, we continue to provide vitally important arts education not offered by any other resource.

Educational outreach highlights:

- Nearly 100,000 students were served by the museum’s Art Adventure program in local schools, and more than 3,000 teachers and Art Adventure volunteers received training;
- Some 5,000 parents chaperoned almost 65,000 K-12 students through the museum.

ArtsConnectEd, a collaborative online educational resource of the Minneapolis Institute of Arts and the Walker Art Center, was accessed almost 1.5 million times in the past year. A free monthly resource for teachers, *Teaching the Arts* online newsletter, also gave instructors innovative ideas for using art in the classroom.

As ever, the museum offers a vast array of opportunities for the community to connect with art—both inside and outside the galleries. Family Days, classes, lectures, seminars, hands-on activities, performances, and other special events continued to captivate audiences throughout the year.

Another exciting museum initiative is Art in the Park, a free program that provides classes in Minneapolis city parks and includes visits to the museum. Organized in cooperation with the Minneapolis Park and Recreation Board, the program now serves 3,000 youths.

Connections made to art inside the museum:

- More than 128,000 people discovered the MIA through tours led by skilled volunteers or through self-guided tours;
- 3,300 youths took part in young people’s classes;
- 5,213 adult visitors took advantage of adult classes and lectures;
- Nearly 23,000 people participated in the programs we design for families—especially Family Days, which remain among the museum’s most successful and best-attended programs;
- Presenters at the MIA this year included living artists Ruth Duckworth, Marc Riboud, and Paul Soldner, and art historians William Gerdtz, Wanda Corn, and Karal Ann Marling.



Our tour programs rely on the extraordinary gift of time and energy by, in Fiscal Year 2005–06, 383 dedicated Museum Guide Program volunteers. The Collection in Focus guide program, the Art Adventure guide program, and the Docent program all train committed arts enthusiasts to help visitors discover what art can mean to them. A new class of 45 docents and 41 Collection in Focus tour guides will bring new joy, meaning, and context to the museum’s collections.







“I raced to the galleries, which look marvelous. So many moments of absolute pleasure. (I like that we each have a car; [the] Walker’s, appropriate to the vicissitudes of the late twentieth century, is smashed, while the one in your galleries is dashing.) Onwards toward a collective future!”

—Kathy Halbreich, Executive Director, Walker Art Center

## AN EXCITING NEW ERA The future you’re helping us create

This year the MIA has experienced a remarkable transition, positioning us as never before for the future growth of the collection, an expanded exhibition program, and enhanced educational offerings for a broad and increasingly diverse audience.

This is an exhilarating time for the museum. Our new wing, and the success of the *Bring Art to Life* Campaign, which has raised close to \$100 million in contributions for the expansion and renovation of the building and for the growth of the museum’s art endowment, will help us expand the MIA’s impact in important ways.

In the years to come, we will:

- Build the collection for the long-term benefit of the community;
- Develop an exciting program of large- and small-scale exhibitions, including major loan shows as well as smaller, focused presentations on the permanent collection;
- Make the museum more attractive to an even broader audience, focusing on opportunities our expanded facility gives us to enhance the visitor’s experience;
- Refine our interpretive strategies, so that we can maximize the quality and consistency of the information we provide to those who come to the museum or visit us online.

Furthermore, we will continue to foster a greater understanding and enjoyment of the visual arts through collaboration with other organizations throughout the Twin Cities and beyond—from the Walker Art Center to performing arts organizations, and from the Park and Recreation Board to our local colleges and universities.

One collaboration recently brought Franz Marc’s *The Large Blue Horses* and Rudolf Belling’s *Head in Brass* into the MIA’s galleries on temporary loan from the Walker Art Center.

The museum has a great future, and we seek to provide an even higher level of service to this remarkable community. We have you—members, supporters, colleagues, and friends—to thank for this privilege.







“I was really honored to be able to cut a ribbon at the opening to the new Target Wing. It was a pleasure to represent all the youth of the Twin Cities, and to think my school will enjoy having more galleries to explore.”

—Lydia O’Callaghan, Whittier neighborhood youth representative, Grand Opening Ceremony

## AN ENORMOUS THANK-YOU The connections you help us deepen daily

Decades from now, museum leaders will look back at this year as a sparkling moment of unprecedented generosity—generosity of inspiration, time, and funds—all to benefit this unique community treasure we know as the Minneapolis Institute of Arts.

It’s through the sincere commitment of dedicated supporters that we’ve been able to build such a vital arts resource and enduring arts legacy for our community. Thousands of schoolchildren and individuals benefit daily from the free general admission policy that your support helps provide.

Thank you for demonstrating your commitment to critical museum priorities: strengthening the museum’s operations, building its world-class collection, and bringing us closer to the \$100 million goal of our *Bring Art to Life* Campaign.

Thank you to the many museum members, corporate sponsors, and foundation partners who have provided generous annual support of the museum during the past fiscal year.

In particular, we wish to acknowledge the citizens of Hennepin County through the Park Museum Fund, the Minnesota State Arts Board supported by an appropriation by the Minnesota State Legislature, the Institute for Museum and Library Services, and the National Endowment for the Arts.

We also acknowledge Target, which in addition to its lead gift to the *Bring Art to Life* Campaign, provided exceptionally generous support for our Grand Opening festivities and the exhibition “The Surreal Calder.”

We’re grateful to you for caring so much about the museum and those who depend on it for arts education and inspiration. I hope you have many opportunities to see and experience the tremendous impact of your giving.

Welcome to this exciting new era!

Joan Grathwol Olson  
*Director of Development*

Clockwise from top: Guests celebrate in the third-floor lobby of the new Target Wing during the First Night Frolic, June 10.

Doug and Mary Olson and Jim and Jo Ann Nordlie celebrate the dedication of the newly re-installed paintings galleries, including the Douglas and Mary Olson Gallery.

Siri and Bob Marshall appreciate Gérard’s painting *Cupid and Psyche*, on loan from Musée du Louvre and exhibited in the Marshall Gallery.

Patty and Sam McCullough, docent, Trustee, curatorial council members, and *Bring Art to Life* Campaign volunteers, celebrate the dedication of the Samuel and Patricia McCullough Gallery.

The MIA is grateful to Leo and Doris Hodroff for the Hodroff Collection of Chinese Export Porcelain and the Doris and Leo Hodroff Gallery.

Jill and Mitch Anderson and Jeff and Susan Lundgren attend the Patrons’ Circle spring social.

Myron and Anita Kunin are fêted December 2, 2005, at the opening of “Villa America,” the exhibition of their Curtis Galleries, Inc. collection of modern art.





BRING ART TO LIFE CAMPAIGN COMMITMENTS

The following community leaders have provided significant support for the *Bring Art to Life* Campaign through June 30, 2006.

Above \$10 million	\$500,000 to \$999,999	\$100,000 to \$249,999		\$50,000 to \$99,999	\$25,000 to \$49,999	\$10,000 to \$24,999
Target Corporation	Anonymous 3M Foundation Anchor Bancorp Martha and Bruce Atwater Carol Burton in memory of M. Boyd Burton, Jr. The Bush Foundation The Cargill Foundation Doug and Wendy Dayton Dolly J. Fiterman Friends of the Institute Penny and Bill George Groves Foundation The Herberger Foundation Patricia and Benjamin Jaffray Elliot and Eloise Kaplan Barbara S. Longfellow Don and Diana Lee Lucker Siri and Bob Marshall Marguerite Streater McNally The Medtronic Foundation Robert and Carolyn Nelson Douglas and Mary Olson Linda and Lawrence Perlman	Anonymous (4) Kim and Gloria Anderson *Mr. Kenneth Barry Ford and Amy Bell Betty and Marvin Borman Foundation Blythe A. Brenden Sandra M. and David M. Brown Sandra and Peter Butler Carmen and Jim Campbell of the Campbell Foundation Joan and Gary Capen Joanne and Benton Case, Jr. Rusty and Burt Cohen Mrs. Thomas M. Crosby, Sr. Dorsey & Whitney LLP Dr. James J. Duffey and Maureen O. Duffey Faegre & Benson LLP Margene and David Fox Mr. and Mrs. Hadlai A. Hull J.E. Dunn Northcentral, Inc. Allen and Kathy Lenzmeier R.C. Lilly Foundation David Lubben and Nancy Kwam Susan and Edwin McCarthy and Alexandra O. Bjorklund Walt McCarthy and Clara Ueland William W. McGuire and Nadine M. McGuire Family Foundation Mr. and Mrs. Kingsley H. Murphy, Jr. Kate Butler Peterson Walter and Harriet Pratt Frances and George Reid Sharon and Bill Richardson Robins, Kaplan, Miller & Ciresi L.L.P. John and Lois Rogers The Burton G. Ross and Cynthia Rosenblatt Ross Fund of The Minneapolis Foundation St. Paul Travelers Foundation Joan and Arthur Schulze The Shared Fund Dr. Richard L. Simmons Laurie and Michael Snow The Southways Foundation Deborah A. Davenport and Stewart R. Stender	Martha B. Stimpson Strangis Family Fund of The Minneapolis Foundation Glenda and Richard Struthers Mr. and Mrs. Sheldon S. Sturgis SUPERVALU Foundation on behalf of SUPERVALU Inc. and Cub Foods Thrivent Financial for Lutherans Joanne and Phil Von Blon The Wallin Foundation— Maxine and Winston Wallin Irving and Marjorie Weiser Mr. and Mrs. F. T. Weyerhaeuser *John R. and Renata Winsor Mike and Penny Winton	Anonymous Steve and Linda Ahlers Fred C. and Katherine B. Andersen Foundation *Ruth B. Anderson John E. Andrus III Marilyn and Frank Beddor *Mrs. Judson Bemis, Sr. Carol and Ray Bergeson Michael and Ann Birt Mary S. Bowman Mary and *Robyn Campbell Anne and Art Collins Mr. and Mrs. Gerald A. Erickson Rebecca and Ben Field Richard and Beverly Fink Kelly and Geoffrey Gage and the Curtis L. Carlson Family Foundation Gary L. Gliem Jerry and Kathie Grundhofer Roger Hale and Nor Hall John and Karen Himle and Himle Horner, Inc. Orville C. Hognander Kathleen A. Jones KPMG Foundation Mary and Mac Lewis Winston Lindberg and Larey Lindberg Swanson Shirley Mahowald and *Henry R. Kinsell Marbrook Foundation Lucy and Robert Mitchell Jim and Linda Mitchell Clinton and Mary Morrison National Endowment for the Arts James and Jo Ann Nordlie Steve and Tamrah Schaller O’Neil *Raymond A. and Ruth A. Reister Jeannine M. Rivet and Warren G. Herreid, II Patty and Barney Saunders Emily Anne and Gedney Tuttle *Thyrza Tyrrel Mary W. Vaughan	Jo and Gordon Bailey Walter and Jane Barry David and Shari Boehnen Carolyn Foundation Darlene and Richard Carroll Myra Chazin Tom and Phyllis Colwell Jeanne and Burt Corwin John and Mary Lou Dasburg Lisa A. Ferris Norman M. Gabrick Linda and Jack Goldenberg Clark and Sima Griffith Tom and Pat Grossman in loving celebration of Beverly Grossman Liz and Van Hawn Don and *Arlene Helgeson Art and Martha Kaemmer Fund of the HRK Foundation Mary D. Keating Miriam and Erwin Kelen Arline Lee Sue and Bob Macdonald Thomas M. Morin and John G. Skogmo Chris and Jack Morrison Jane and John Morrison Barry Murphy and Rosemary Dunbar Jane and Thomas Nelson John and Shirley Nilsen Brian and Julia Palmer Michael and Gloria Plautz Valspar Ruth and David Waterbury Helen and J. Kimball Whitney Patricia C. Williams Frederick and Eleanor C. Winston in honor of Ella P. Crosby Charles and Julie Zelle	Anonymous (2) Mary and Gordon Aamoth Leslie Miller Altman *Michael H. Baker Craig Bentdahl and Stephanie Simon in honor of Al and Ingrid Lenz Harrison Bergren Family Foundation Michael Boardman and Kate Tabner Mary Morse Cargill Lisa Dayton Joan Duddingston *Mrs. Dorothy Fobes John and Martha Gabbert Goldner Family Fund of The Minneapolis Foundation Hunt Greene and Jane Piccard Ann and David Heider Susan and Duane Hoff in memory of Sandra J. Schulze Patricia and Thomas Holloran Hubbard Broadcasting Andrew M. and Carole T. Hunter *Frank E. Johnson Emily and Charles M. Kelley *Paul and *Gisela Konopka David and Randy Lebedoff Dudley and Val McLinn *Jeanne E. Michener Walter F. and Joan Mondale OLSON Louisa H. Richardson Securian Foundation Marcy and Bruce Shilling Margot Siegel Tennant Foundation Jean Thomson and John Sandbo Helen S. Waldron Fred and Alice Wall Catherine R. and Steven C. Webster in honor of Martin M. Roessler Wenger Foundation Betsy and David Weyerhaeuser

\*Deceased



**PERMANENT GALLERIES**

**The following galleries and spaces have been permanently named in recognition of commitments to the *Bring Art to Life* Campaign.**

3M Gallery

Carlson Family Foundation Educational Classroom

Douglas and Wendy Dayton Gallery

C. Curtis Dunnavan Gallery

Jay F. Ecklund Gallery

Jane and James Emison Gallery

Geren and J. Hap Fauth Gallery

Miles and Shirley Fiterman Gallery

Dolly Fiterman Gallery

Friends Community Room

Bill and Penny George Gallery

Pierson MacDonald and Florence Brogan Grieve Gallery

Mary Griggs Burke Galleries of Japanese Art

Carolyn and Franklin Groves and Groves Foundation Grand Salon

William and Barbara Harrison Gallery

Leo and Doris Hodroff Gallery

John and Ruth Huss Gallery

Mary Ingebrand-Pohlad Gallery

Patricia Dorn Jaffray and Benjamin Jaffray Gallery

Winton Jones Gallery

Don and Diana Lee Lucker Gallery

Whitney and Elizabeth MacMillan Gallery

Cargill and Donna MacMillan Gallery

Ted and Roberta Mann Gallery

Siri and Bob Marshall Gallery

Samuel D. and Patricia N. McCullough Gallery

Marguerite Streater McNally Gallery

Mary Agnes and Al McQuinn Gallery

Medtronic Gallery

Robert and Carolyn Nelson Gallery

Douglas and Mary Olson Gallery

Linda and Lawrence Perlman Gallery

Darwin and Geri Reedy Gallery

Otis Elevator presented in memory of Burton G. Ross by Cynthia Rosenblatt Ross

The Sit Galleries

Star Tribune Atrium

Target Special Exhibition Galleries

U.S. Bank Atrium

Bob Ulrich and Jill Dahlin Galleries

Wells Fargo Galleries

**ART ENDOWMENTS**

**The following permanently named endowments have been created or increased through gifts and pledges of \$50,000 or more to the *Bring Art to Life* Campaign.**

Anonymous (5)

Ruth B. Anderson Memorial Endowment for Asian Art

Marilyn and Frank Beddor Endowment for Asian Art

Ford and Amy Bell Endowment Fund for Decorative Arts

James Ford Bell Foundation Endowment for Art Acquisition

Michael Bennes Endowment for Art Acquisition

Marilyn C. Benson Endowment for Art Acquisition

Carol and Ray Bergeson Endowment for Art Acquisition

Michael and Ann Birt Endowment for Art Acquisition

Mary S. Bowman Endowment for Art Acquisition

Mary Griggs Burke Endowment for Art Acquisition

Blythe A. Brenden Endowment for Art Acquisition

David and Sandra Brown Endowment for Paintings

Carol and M. Boyd Burton Endowment

Mary and Robyn Campbell Fund for Art Books

Joan and Gary Capen Endowment for Art Acquisition

Dandelion Endowment for Textiles

Driscoll Art Accessions Endowment Fund

James and Maureen Duffey Endowment for Prints and Drawings

C. Curtis Dunnavan Endowment for Asian Art

Jane and James Emison Endowment for Native American Art

Rebecca and Ben Field Endowment for Art Acquisition

Richard and Beverly Fink Endowment for Art Acquisition

Patricia and Peter Frechette Endowment for Art Acquisition

Norman Gabrick Endowment for African Art

Kelly and Geoffrey Gage Endowment for Art Acquisition

Gary L. Gliem Endowment for Japanese Art

Bernard and Fern Granum Fund for Art Purchase

Beverly Grossman Endowment for Art Acquisition

Herberger Foundation Endowment for Art Acquisition

Hognander Family Endowment for Scandinavian Art

Douglas J. and Victoria Galloway Holmen Endowment Fund

Hadlai and Anne Hull Endowment for Art Acquisition

John and Ruth Huss Fund for Decorative Arts

Susan Jacobsen Endowment for Art Acquisition

Winton Jones Endowment Fund for Prints and Drawings

Eloise and Elliot Kaplan Endowment for Judaica

Shirley Mahowald and Henry Kinsell Endowment for Art Acquisition

Allen and Kathy Lenzmeier Endowment for Art Acquisition

Mary and Mac Lewis Endowment for Art Acquisition

Larey E. Lindberg and Larey Swanson Endowment for Art Acquisition

Barbara S. Longfellow Fund for Works on Paper

Barbara S. Longfellow Fund for Twentieth Century Paintings and Sculpture

William and Harriet Ludwick Endowment for Western Art

Siri and Bob Marshall Endowment for American Paintings

Martin and Brown Endowment Fund

Walter McCarthy and Clara Ueland Endowment for Photographs

Samuel and Patricia McCullough Endowment for American Furniture and Folk Art

Marguerite S. McNally Endowment for Art Acquisition

Mary Agnes and Alvin E. McQuinn Endowment for Decorative Arts

Sheila C. and John L. Morgan Endowment for Art Acquisition

James and Jo Ann Nordlie Endowment for Art Acquisition

Linda and Lawrence Perlman Photography Endowment

Mary Ingebrand-Pohlad Endowment for Twentieth Century Paintings

Raymond and Ruth Reister Endowment for Art Acquisition

Suzanne S. Roberts Endowment for Asian Art

The Shared Fund

Simmons Family Endowment for Textiles

Deborah Davenport and Stewart Stender Endowment for American Folk Art

Glenda and Richard Struthers Endowment for Art Acquisition

David and Ruth Waterbury Endowment for Contemporary Craft

Mary Ruth Weisel Endowment for Africa, Oceania and The Americas

John R. and Renata Winsor Endowment for Art Acquisition

*Donors to the Michael Bennes Endowment for Art Acquisition*

Anonymous (6)

Doodie Backstrom

Jo and Gordon Bailey

Arlene Baker

Ruth Berg

Rollin and Anna Bergquist

Amanda and James Birnstengel

Sally Boyd Polk

Kimberly J. Bowman

John and Alice Campbell

Imogene B. Christian

Marianne Conley

Sandra Cox-Yench

Camille Crandall

Madeline C. Cushman

Margaret Doetkott

Carol Donahue

Connie Donnelly

Barbara A. Fritz

Mona Hadary

Marian Hayes

Nancy Karras Jacobson

Dianne Jandt

Charmaine Jones

Kathleen A. Jones

Marilyn Kelly Cramolini

Patricia P. Kelly

Waynedain and Judith Landreth

Catherine Larson

Ann Lange

Arline Lee

David and Mary Maas

Bob Marshall

Nancy Martin

Marguerite S. McNally

Conrad Nelson

Diane and Willis Olson

Kristen Ophaug

Richelle Pearl-Koller

Lois Steer and Larry Peterson

Ollie Ray

Doris and Robert Rose

Patricia A. Smith

Michael L. Summerfield

Voni and Dale Swenson

Beverly and Edwin Thiede

Mary and Rolland Thompson

Jeanine Tracy

Kris and Bill Veeneman

Judith Vermeland-Wendt

Ruth and David Waterbury

Frank and Elaine M. Wray



GIFTS OF \$10,000 AND MORE

The generosity of the donors on these two pages has sustained the museum's collections, programs, and services throughout the 2005-2006 fiscal year. We acknowledge them for their leadership and depth of commitment to those we serve.

<b>PATRONS’ CIRCLE GIFTS</b>
<b>Patrons’ Circle Founders</b>
<b>\$50,000 and above</b>
Ruth and Bruce Dayton°
Alfred and Ingrid Lenz Harrison°
Bob Ulrich and Jill Dahlin°
<b>Patrons’ Circle Sponsors</b>
<b>\$25,000-\$49,999</b>
Mrs. Wallace C. Dayton°
Jane and *Jim Emison°
Dolly J. Fiterman°
N. Bud and Beverly Grossman Foundation°
Dr. and Mrs. William E. Ludwick°
Mr. and Mrs. W. Duncan MacMillan°
Whitney and Elizabeth MacMillan°
Ted and Roberta Mann Foundation°
Sheila and John Morgan°
Mr. and Mrs. C. Angus Wurtele°
<b>Patrons’ Circle Collectors</b>
<b>\$15,000-\$24,999</b>
Anonymous
Susan and Richard Anderson°
Pete and Margie Ankeny
Martha and Bruce Atwater°
Sandra and Peter Butler°
Jay F. Ecklund°
Jundt Family Foundation
Kathy and Al Lenzmeier°
Mary Agnes and Al McQuinn°
Steve and Tamrah Schaller O’Neil°
Darwin and Geri Reedy°
Laurie and Michael Snow
Strangis Family Fund of The Minneapolis Foundation

<b>Patrons’ Circle Directors</b>
<b>\$10,000-\$14,999</b>
Linda and Steve Ahlers°
Susan and James R. Cargill II
Elisabeth J. Dayton°
Eric Dayton
Julia W. Dayton°
Elizabeth and W. John Driscoll°
Mr. Kevin Ingram Hart and Mrs. Polly Dix Hart
Susan S. and Duane D. Hoff
Ruth and John Huss°
Mary Ingebrand-Pohlad
The Larsen Fund°
R.C. Lilly Foundation°
Barbara S. Longfellow°
Cargill and Donna MacMillan°
Samuel and Patricia McCullough°
William W. McGuire and Nadine M. McGuire Family Foundation°
Barry Murphy and Rosemary Dunbar°
Katherine D. and Stuart A. Nielsen°
Dr. and Mrs. Moe. S. Nozari
John and Cindy Olson
Linda Peterson Perlman and Lawrence Perlman°
John and Lois Rogers°
Gene and Gail Sit°
Roger and Michele Sit
Betsy and David Weyerhaeuser
<b>(Additional Patrons’ Circle gifts continued on page 32)</b>

<b>CORPORATE AND FOUNDATION GRANTS</b>
<b>Corporate Council Directors</b>
<b>\$50,000 and above</b>
3M Foundation°
Ameriprise Financial Foundation°
Cargill Foundation°
General Mills Foundation°
The McKnight Foundation
The Medtronic Foundation°
Minnesota State Arts Board°
Target, with support from the Target Foundation°
U.S. Bancorp Foundation°
<b>Corporate Council Benefactors</b>
<b>\$25,000-\$49,999</b>
Patrick and Aimee Butler Family Foundation°
Northwest Airlines, Inc.
St. Paul Travelers Foundation°
Star Tribune Foundation°
U.S. Trust Company
Wells Fargo Foundation Minnesota on behalf of Lowry Hill, Wells Fargo Bank Minnesota, Wells Fargo Brokerage Services, Wells Fargo Institutional Investments, and Wells Fargo Private Client Services°
Xcel Energy Foundation°

<b>Corporate Council Leaders</b>
<b>\$10,000-\$24,999</b>
Fred C. and Katherine B. Andersen Foundation
The James Ford Bell Foundation
Deluxe Corporation Foundation°
Dorsey & Whitney Foundation°
Faegre & Benson Foundation°
B. C. Gamble and P. W. Skogmo Fund of The Minneapolis Foundation°
Haworth Marketing & Media Company
J.E. Dunn Northcentral, Inc.
KPMG L.L.P.
The Pentair Foundation
Carl and Eloise Pohlad Family Foundation
RBC Dain Rauscher Foundation°
Robins, Kaplan, Miller & Ciresi L.L.P.°
RSP Architects Ltd.
The Southways Foundation
SUPERVALU Foundation on behalf of SUPERVALU INC. and Cub Foods°
TCF Bank°
Thrivent Financial for Lutherans°
The Valspar Foundation
Grace B. Wells Fund of The Minneapolis Foundation°
<b>(Additional corporate and foundation grants continued on page 35)</b>

<b>GRAND OPENING SUPPORTERS</b>
In June 2006, the Minneapolis Institute of Arts hosted several weeks of gala opening events that introduced the expanded museum to the community. These opening celebrations were generously supported by the following individuals and organizations.

<b>Opening Weekend Exclusive Sponsor</b>
Target

<b>Grand Opening Gala Committee Chair</b>
Roberta Mann-Benson

<b>Celebration Partners</b>
<b>\$25,000</b>
Sit Investment Associates
U.S. Bank

<b>\$10,000</b>
3M
Best Buy
Cargill
Ford Motor Company
General Mills Foundation
Kraus-Anderson
Ted and Roberta Mann Foundation
McKinsey & Company
The Medtronic Foundation
RSP Architects
Wells Fargo Minnesota
Xcel Energy Foundation

<b>GIFTS AND SPONSORS FOR EXHIBITIONS AND PROJECTS</b>
<b>\$10,000 and above</b>
3M Foundation
Anchor Bank
Best Buy Children’s Foundation
Ruth and Bruce Dayton
Julia W. Dayton
Ford Motor Company Fund
The Herberger Foundation
Lowry Hill
The Janine Luke Fund of the Fidelity Charitable Gift Fund
Print and Drawing Council
The Regis Foundation
Jack A. and Aviva Robinson Fund of the Community Foundation for Southeastern Michigan
The Melvin R. Seiden Fund of the Fidelity Charitable Gift Fund
Sit Investment Associates Foundation
Target, with support from the Target Foundation
U.S. Bancorp

<b>GIFTS OF ART AND FUNDS FOR ART ACQUISITION</b>
<b>\$10,000 and above</b>
Steven M. Andersen
Antiques Show
Bruce and Ruth Dayton
Mrs. Eunice L. Dwan
Alfred and Ingrid Lenz Harrison
Hawthorne Advised Fund of The Saint Paul Foundation
Emily and George R.A. Johnson
*Janey Leck
Kiyoko Lerner
Don and Diana Lee Lucker
Mary Agnes and Al McQuinn
Ellen Messer-Davidow
Dr. Michael B. Miller
The Regis Foundation
James Tigerman
Martin and Lora Weinstein
Ellen and *Fred Wells
Rosita Hawley Wright
<b>(Additional gifts of art and funds for art acquisition continued on page 36)</b>

\*Deceased  
°Donor for ten consecutive years or more



**PATRONS’ CIRCLE GIFTS**

*(Continued from page 30)*

**Patrons’ Circle Partners**

**\$5,000-\$9,999**

John and Catherine Agee°  
Kim and Gloria Anderson°  
Mrs. William R. Anderson, Jr.°  
Mr. John E. Andrus III°  
Richard G. and Mary Lyn Ballantine°  
Ford and Amy Bell  
David and Shari Boehnen°  
Betty and Marvin Borman°  
Mr. and Mrs. Conley Brooks, Sr.°  
Kathy and Tim Burns  
Robert and Gail Buuck, Buuck Family Foundation°  
John and Susan Camp  
Carmen and Jim Campbell  
Rusty and Burt Cohen°  
Kristen Copham  
Julie Corty and Richard Erickson  
David and Vanessa Dayton  
Wendy and Douglas Dayton  
Bob and Joanie Dayton°  
Pat and Lisa Denzer  
Mr. Harry M. Drake°  
C. Curtis Dunnavan°  
Mr. and Mrs. J. Hap Fauth°  
Beverly and Richard Fink°  
Miles and Shirley Fiterman Charitable Foundation°  
David and Margene B. Fox°  
Mr. and Mrs. Peter Frechette°  
Geoffrey and Kelly Gage  
Penny and Bill George  
Pierson M. and Florence B. Grieve Family Fund of The Saint Paul Foundation  
Robert and Kim Griffin  
Jerry and Kathleen Grundhofer  
Bruce and Sharon Hendry  
John and Karen Himle°  
Sue and Bill Hodder Family Fund of The Minneapolis Foundation  
Mr. and Mrs. Leo A. Hodroff  
Leonard and Mary Lou Hoeft  
The Hubbard Foundation°  
Patricia and Benjamin Jaffray°  
Elliot and Eloise Kaplan Family Fund of The Minneapolis Foundation  
B. John and Sarah Lindahl, Jr.  
Rosalee MacFarlane°

Siri and Bob Marshall°  
Mr. Donald McNeely°  
Jane and John Morrison°  
Marilyn and Glen Nelson°  
Roger and Violet Noreen Charitable Trust  
Douglas and Mary Olson°  
Donald G. and Beverly J. Oren Charitable Gift Fund of the Fidelity Investments Charitable Gift Fund  
Sue Ann Pirsch  
The Regis Foundation°  
Mrs. Patricia Ringer°  
Jeff and Kim Rugel  
Darryl and Diane K. Sannes  
Deb Davenport and Stew Stender  
Martha B. Stimpson°  
Mrs. Frederick O. Watson  
Mary Ruth Weisel°  
Marjorie and Irving Weiser°

**Patrons’ Circle Benefactors**

**\$3,000-\$4,999**

Anonymous (2)  
Mr. and Mrs. Peter W. Anson°  
Jo and Gordon Bailey°  
Gretchen and Mark Banks  
Edward R. Bazinet Foundation°  
Donna and Warren Beck°  
Charles and Sandra Blackman  
G.M. Bradley°  
Sandra M. and David M. Brown°  
Daniel and Christine Buss  
Catherine R. Carlsen  
Nicky and Tom Carpenter°  
Darlene J. and Richard P. Carroll°  
Joanne and Benton Case, Jr.°  
Helen L. Cashman°  
Myra Chazin  
Ann C. and Michael V. Ciresi  
Helen Cleveland°  
Mrs. Thomas M. Crosby, Sr.°  
John and Mary Lou Dasburg°  
Dr. and Mrs. John B. Davis, Jr.°  
Arlene and John Dayton°  
Cy and Paula DeCosse Fund of The Minneapolis Foundation  
William and Janice Dircks  
Mary and Bill Dolan  
Mike and Kathy Dougherty  
Benjamin and Rebecca Field°  
Mary Goff Fiterman°  
Mr. and Mrs. George Flannery°  
Skip and Barbara Gage  
Linda and Jack Goldenberg  
Barbara and Mike Goldner°

Michael and Elizabeth Gorman  
Jennifer Gross and Jerry LeFevre  
Rosalie Heffelfinger Hall Fund of The Minneapolis Foundation°  
Ruth E. Hanold°  
Don Helgeson°  
Diane and Tony Hofstede°  
Orville C. Hognander°  
Douglas and Victoria Holmen  
Mr. and Mrs. Philip Isaacson  
Janet N. Jones  
Lucy Jones°  
Mrs. Stephen F. Keating°  
Skip and Sarah Krawczyk  
Stephen and Kathi Austin Mahle  
George A. Mairs°  
Susan and Edwin McCarthy°  
Jeffrey C. Meehan  
Mary and Bob Mersky  
Lee R. Mitau and Karin J. Birkeland  
Lucy and Robert Mitchell°  
Ray and Mary Mithun  
Oak Grove Foundation—John L. Morrison°  
Amy S. Mulvahill  
Elizabeth B. Myers°  
Wendy Nelson and Daisy Mitchell  
Jenny Nilsson and Garrison Keillor  
James and Jo Ann Nordlie°  
Sally and George Pillsbury°  
Walter and Harriet Pratt  
Robert and Christine Salmen  
Mr. and Mrs. Hugh K. Schilling  
Mr. and Mrs. David C. Sherman  
Harriet and Edson Spencer Fund of The Minneapolis Foundation  
Donald F. and Virginia Swanson°  
Emily Anne and Gedney Tuttle°  
Mary W. Vaughan Fund of The Minneapolis Foundation°  
The Wallin Foundation—Maxine and Winston Wallin°  
Jo and Howard Weiner°  
Ellen and \*Fred Wells  
Violet M. Werner°  
Nancy and Ted Weyerhaeuser°  
Helen and J. Kimball Whitney°  
Wheelock Whitney  
Mrs. David S. Williams°  
John and Renata Winsor Fund of The Minneapolis Foundation°  
Mike and Penny Winton°  
Elayne and Marvin Wolfenson°

**Patrons’ Circle Members**

**\$1,500-\$2,999**

Anonymous (4)  
Mary and Gordon Aamoth°  
Mr. and Mrs. Richard Adams°  
Rob and Carolyn Albright  
Todd and Allyson Aldrich°  
Mrs. Darrel R. Alkire  
Philip and Sandra Allen  
Adrian and Sally Almquist  
Frank and Leslie Altman  
Martha B. Alworth  
Julianne Amendola and Dan Jensen  
Mr. and Mrs. Robert W. Amis°  
William and Suzanne Ammerman°  
Elizabeth A. Anderlik°  
Sarah J. Andersen and Christopher A. Hayner°  
Clifford and Nancy Anderson  
Susan and Lloyd Armstrong°  
Edward and Eleanor Asplin  
Mary Atmore and James Baldwin  
Mr. and Mrs. Daniel Avchen  
Fern Badzin°  
Kent and Maria Bales  
Joel and Susan Barker  
Walter and Jane Barry°  
Marilyn and Frank Beddor  
Martha and Frank Bennett°  
Sue A. Bennett°  
Marilyn C. Benson°  
Larry and Barbara Bentson  
Nathan and Theresa Berman Family Philanthropic Fund°  
Lurie Besikof Lapidus & Company, LLP (Marshall Besikof)  
Herman J. Birnberg°  
Michael and Ann Birt°  
Carolyn Bission and Richard R. Miller°  
Alexandra O. Bjorklund  
Olivia Haines Blackburn°  
Michael Boardman and Kate Tabner  
Philip and Linda Boelter  
Susan and Rod Boren°  
Kimberly J. Bowman  
Mr. and Mrs. Bradley C. Bowman II°  
Carole and Norlin Boyum  
Blythe Brenden  
Mr. and Mrs. Michael Bress°  
Arnold and Judith Brier  
Lucile Adams Brink°  
William Brody and Bronwen Cound

Carol G. and Conley Brooks, Jr.  
Delores W. Brooks  
Virley and Forrest Brown°  
Nancy and John Burbidge Family Fund of The Minneapolis Foundation  
Carol and \*M. Boyd Burton°  
Rodney and Barbara Burwell  
Ellen Knighton  
Barbara Byrne  
Mrs. Robyn Campbell°  
Joan and Gary Capen°  
Diane and Jerry Carlson  
Jane Carlson and Chuck Madhav  
Joanne Carlson°  
Walter and Elsa Carpenter Family Fund of The Minneapolis Foundation°  
Kristine A. Cecil and Mike Cureton  
Kerry Ciardelli-Olson  
Squam Lake Foundation—Charles A. Cleveland°  
Dr. John I. Coe°  
Diane and Richard Cohen°  
Dr. Jay N. and Syma C. Cohn  
Douglas and Sands Coleman Fund of The Minneapolis Foundation°  
Art and Anne Collins°  
Tom and Phyllis Colwell°  
Ed and Joann Conlin  
Dr. James E. and Gisela Corbett°  
Judith and Richard Corson°  
Jeanne and Burt Corwin°  
Tom and Ellie Crosby, Jr.°  
Dr. James H. Cupery and Mr. John Wittgraf  
Kenneth and Betty Jayne Dahlberg°  
Merrie and David Dahlgren°  
Fran Davis°  
Mrs. Julius E. Davis°  
Edward and Sherry Ann Dayton°  
Megan and James Dayton  
Mary H. Dayton  
Mr. and Mrs. David Delaney°  
Dr. and Mrs. Francis Denis  
Charles M. Denny, Jr. and Carol E. Denny Fund of The Minneapolis Foundation  
Ann and Jack Dietrich°  
Mr. and Mrs. George H. Dixon°  
Carol Donahue°  
Bright M. Dornblaser  
Mr. and Mrs. John B. Driscoll  
Joan R. Duddingston°  
Sally Economon°

Mr. and Mrs. Gerald A. Erickson°  
Bob and Lisa Erickson°  
Kristine S. and Ronald A. Erickson°  
Sheryl and David Evelo°  
Steve and Janet Everly°  
Bill and Kathy Farley°  
Jack and Cathy Farrell  
Lisa A. Ferris  
John and Ester Fesler°  
Gerald T. Flom°  
Martha Benton Flom°  
Vickie Foster  
Bill Fox  
B.J. and John French°  
Eugene and Mary Frey  
Jack and Melinda Fribley  
Sally and Gerald H. Friedell°  
Mrs. Marna W. Fullerton°  
The Furst Foundation  
Jim and Barb Gabbert  
John and Martha Gabbert  
Ellen and Jerry Gallagher°  
Jacqui Gardner  
Charles A. Geer Family Fund  
Jim Geisinger  
Renee and Robin Gibson  
Susan Ginder  
Dr. Stanley M. and Luella G. Goldberg°  
Christine Gasparovich and Brian Gould  
Margot and Paul Grangaard  
Sima and Clark Griffith°  
Dan and Ruth Haggerty  
Rehael Fund—Roger L. Hale and Eleanor L. Hall Fund of The Minneapolis Foundation  
Betsy and Jule Hannaford  
Bev and Hal Harris°  
Lorraine R. Hart  
Lucy Hartwell  
Liz and Van Hawn°  
Elaine and Roger Haydock  
Ann and David Heider°  
Jack and Kate Helms°  
John and Diane Herman°  
Mrs. Helen M. Hocker°  
Patricia and Thomas Holloran°  
Craig Holstad  
John and Jean McGough Holten°  
Shelley Holzemer°  
Ms. Jan Schonwetter  
Dorothy J. Horns, M.D. and James P. Richardson°  
Ron Hovda  
Somerset Foundation—Hella Mears Hueg and Bill Hueg°  
Mr. and Mrs. Hadlai A. Hull°

Andy and Carole Hunter°  
Joan and Dean Hutton°  
Ann Rockler Jackson  
Richard and Sandra Jacobson  
Emily and George R.A. Johnson  
Josie R. Johnson°  
Ray and Sue Johnson  
Sally and Rodger Johnson  
Jacqueline Nolte Jones  
Kathleen and Douglas Jones  
Art and Martha Kaemmer Fund of the HRK Foundation°  
Sam and Sylvia Kaplan Fund of The Minneapolis Foundation°  
Dr. Markle and \*Charlotte Karlen°  
Glenn and Laurel Keitel  
Michele and Rob Keith°  
Miriam and Erwin Kelen°  
Emily and Charles Kelley  
Thomas and Janice Kelley Charitable Fund  
Warren and Patty Kelly°  
Caroline Kelm  
James C. and Madonna W. King  
Bob and Margee Kinney°  
Patricia and Peter Kitchak°  
Beth Koepke  
Drs. Laurel Krause and Ross Collins°  
Jean and Charles V. Krogness°  
Roberta and William Laird  
Mr. and Mrs. Tonu Lang°  
David and Randy Lebedoff  
LeJeune Family Foundation°  
Harry and Sandra Lerner  
Dr. and Mrs. S.H. Levitt°  
Dorothy and Morris G. Levy Charitable Fund°  
C.M. and Mary Lewis°  
Nicolai and Ronald Lewis°  
Ward B. and Susan E. Lewis°  
Carol Lichterman°  
Sheila and Stephen Lieberman  
Peggy Liemandt  
Mrs. Betty Jeanne Lillehei°  
Dr. John C. and Searcy T. Lillehei°  
John and Nancy Lindahl Family Fund of The Minneapolis Foundation  
Mary Carroll Linder  
Lois Kay Litin  
Robert and Sara Lumpkins°  
M.A. and Karen F. Lund  
Neilan B. and Judy Lund°  
Susan and Jeff Lundgren  
Donna and Les Lundstrom  
David and Mary Maas°  
Reid and Ann MacDonald  
Bob and Sue Macdonald°

Mr. and Mrs. William Mackenzie°  
Jennifer L. Martin  
James and Eva May°  
Jeremy Mayberg  
Robert W. Maynard Fund of The Minneapolis Foundation°  
Susan and Thomas McCarthy  
Walt McCarthy and Clara Ueland  
Tom and Mary McCary  
\*Aileen and George McClintock Fund of The Minneapolis Foundation  
Bob and Polly McCrea  
Mr. and Mrs. R.D. McFarland  
Terrence McGann and Jean Burke  
Dudley and Val McLinn°  
Deborah and Pierce McNally  
Marguerite S. McNally°  
Mary Ann McNeil and David Higgins  
M. D. and Mary McVay°  
David Mealman  
Robert and Elizabeth Melamed°  
William F. Messerli  
Alida Messinger  
Marlene and Marshall Miller°  
Jim and Linda Mitchell°  
Charles and Nancy Mitchell  
Saralee and Neil Mogilner°  
Elizabeth and Charles Mooty  
Thomas M. Morin and John G. Skogmo  
Truxton and Adrienne Morrison  
Angus T. Morrison°  
Clinton and Mary K. Morrison°  
Sally A. Mullen  
William E. and Chouhei Mullin  
\*Judy and John Murphy°  
Mr. and Mrs. Kingsley H. Murphy, Jr.°  
Kathy Murphy and Norman Rickeman  
Alan and Dena Naylor°  
Timothy J. Naylor and Laura C. MacLennan  
Connie S. Nelson°  
Jane and Thomas Nelson°  
Patricia J. Nelson  
Robert W. and Carolyn Nelson  
Christie and Win Neuger°  
Sheryl and Steve Newman  
Mr. and Mrs. John J. Nichols°  
Nancy and Richard Nicholson  
Anne H. Nickoloff°  
John and Shirley Nilsen°  
David and Sheryll Norback

\*Deceased

°Donor for ten consecutive yeors or more



The Dan and Sallie O’Brien Fund of The Saint Paul Foundation

Dr. Stephen Oesterle and Mrs. Adrienne Oesterle

Mr. and Mrs. William F. Ogden, Jr.°

Ms. Joan Grathwol Olson and Mr. Stephen Olson

Valdemar and Marilyn Olson°

Gregrey J. Opdahl°

Gillian and Thomas Osborn

Harriet and Bowen Osborn°

Lawrence M. and Elizabeth Ann O’Shaughnessy Charitable Income Trust

Ross and Joann Paden°

Brian and Julia Palmer°

Allegra W. Parker

Mrs. James R. Paul

Jeanne E. Pemble and Joel Poeschl°

David Perlman and Erica Norris Perlman

Nancy McGlynn Phelps and James J. Phelps

Jane Piccard and R. Hunt Greene°

Philip W. Pillsbury, Jr.

Michael and Gloria Plautz°

Forbes W. Polliard

Stephanie Prem and Tom Owens

Mark and Christine Rasmussen

Morgen Rasmussen

Harvey and Barbara Ratner

Paul and Jeanne Ravich

Lawrence M. Redmond°

Ruth and \*Raymond Reister°

Lew and Connie Remele

Susan C. Rhode

Sharon and Bill Richardson

Marcia and Robert Rinek

Jeannine M. Rivet°

Mr. and Mrs. Nathaniel Robbins°

Jack A. and Aviva Robinson

John and Sandra Roe

Beverly J. and John A. Rollwagen Fund of The Minneapolis Foundation

Kevin Ronan and Pam Pryshepa Ronan

Michael and Tamara Root°

Abigail Rose and Michael Blum

Cynthia Rosenblatt Ross°

Jean C. Rowland

Mimi and David Sanders

Earl S. and Barbara Flanagan Sanford Fund of The Minneapolis Foundation

Patty and Barney Saunders°

Professor and Mrs. Stephen B. Scallen

James A. Scarpetta

Fred and Virginia Scheel

Nancy and Eric Schned

Claire and Jim Schoenwetter

Joan and Arthur R. Schulze°

Jane and John Schulzetenberg°

Doug and Mary Scovanner

Katie and Ken Searl°

Beth Ann and Saul Segal

Dr. Sidney Shapiro°

Denise and Richard Sheehy

Marcy and Bruce Shilling

Margot Siegel°

Barbara and Lloyd Sigel

Mrs. Helen Silha°

Paul and Teri Singer

Adine and Thomas Skoog°

Stanislaw and Krystyna Skrowaczewski°

Joan T. Smith°

Tim Smith and Karen Miller

Lynne and Howard Stacker°

Barbara H. Steiner°

Mrs. George Steiner

Evelyn T. Struthers°

Glenda and Richard Struthers°

Tiffany Stuart and Scott Stuart, M.D.

Kenneth and Soni Styrlund

Karen Tracy Sutherland

H.R. and Elaine B. Swanson

Cammie and Mike Sweeney

Ross and Doris Taylor

Brian and Linda Tell

Patricia Tilton

Bob Harding and Allan Valgema, M.D.

Victoria K. Veach

Kris and Bill Veeneman°

General and Mrs. John Vessey°

Joanne and Philip Von Blon

Bernie and Janet Wagnild°

Jack and Connie Wallinga°

Kathleen and William F. Wanner, Jr.

Ruth and David Waterbury

Martin and Lora Weinstein

Karen E. Welke°

Mark A. Westman and Christopher Duff

\*Mr. and Mrs. Mark Wexler°

Frances and Frank Wilkinson°

Mrs. Frances L. Williams

Susan and Steve Wilson°

David A. Wilson and Michael J. Peterman

Winslow Family Foundation

Mr. and Mrs. Frederick Winston

Helen and Leo Wolk°

Marjorie A. Wood

Kirt Woodhouse

Margie and Woody Woodhouse

Arna and Tom Yetter

Cleo and Charles Zalk°

Larry and Diane Zavadil°

Charles and Julie Zelle

CORPORATE AND FOUNDATION GRANTS

(Continued from page 30)

Corporate Council Partners

\$6,000-\$9,999

Frey Family Foundation

G & K Services, Inc.°

Oppenheimer Wolff & Donnelly L.L.P.

Piper Jaffray

Rahr Foundation°

Tunheim Partners

UnitedHealth Group

Wenger Foundation°

Corporate Council Associates

\$3,000-\$5,999

Athwin Foundation

The Bayport Foundation

The Curtis L. Carlson Family Foundation

Dellwood Foundation, Inc.

Deloitte & Touche L.L.P.

Ernst & Young L.L.P.°

First Commercial Bank

Gray Plant Mooty Foundation°

Harris Companies°

InterDyn-Business Microvar, Inc.

Leonard, Street and Deinard°

Lindquist & Vennum P.L.L.P.

Marbrook Foundation°

Maslon Edelman Borman & Brand

Mayo Clinic°

Meyer, Borgman & Johnson Consulting Structural Engineers

Alice M. O’Brien Foundation

Onan Family Foundation°

Patterson Dental

Peregrine Capital Management, Inc.

The Elizabeth C. Quinlan Foundation

Margaret Rivers Fund

Room & Board

Sebesta Blomberg and Associates, Inc.°

Securian Foundation°

Tennant Foundation°

The Toro Company°

Corporate Council Members

\$1,500-\$2,999

Access Financial Services, Inc.

American Security Corporation, L.L.C.

Elmer L. and Eleanor J. Andersen Foundation°

Art Holdings

Bank of the West

Berkley Risk Administrators

Burlington Northern Santa Fe Foundation

C. H. Robinson Company°

CKC Contracting, Inc.

D’Amico and Partners

Diversified Graphics Incorporated

Dolphin Staffing

Fair Oaks Apartments

Faribault Foods

Federated Insurance Foundation°

The Fredrikson & Byron Foundation

Hammel Green and Abrahamson, Inc.

Harrison Development, Inc.

Larson Allen Weishair & Co. L.L.P.

Lenox Group

Little & Company

Malt-O-Meal Company

Joseph F. McCrindle Foundation

The Mendon F. Schutt Foundation of the Minneapolis Foundation

R. Chase Financial

Rosemount, Inc.°

Schaefer Hardwood Floors

Schwegman, Lundberg, Woessner and Kluth, P.A.

SRF Consulting Group, Inc.

Syngenta Seed, Inc.

Business League Leaders

\$1,000-\$1,499

Bailey Nurseries, Inc.

Brock White Company°

Burdick Family Charitable Foundation

Hiawatha Lumber Company°

Horton Inc.

Betsy Johnson Fund of the Minneapolis Foundation

Merchant & Gould

Michaud Cooley Erickson°

Red Wing Shoes Company Foundation

Summit Brewing Company°

Archie D. and Bertha H. Walker Foundation°

William Beson Interior Design°

Zelle, Hofmann, Voelbel, Mason & Gette

Business League Partners

\$600-\$999

American Engineering Testing

Après Party and Tent Rental°

Aspen Waste Systems, Inc.

Barry and Sewall Industrial Supply Company°

Berger Transfer & Storage, Inc.

Aaron Carlson Corporation

Elliott Contracting Corp.

Fast Print, Inc.°

Heraeus Vadnais, Inc.

Liberty Diversified Industries°

Minnesota Knitting Mills

Business League Associates

\$300-\$599

Christos Greek Restaurant

Cobb, Strecker, Dunphy and Zimmerman, Incorporated°

Crown Holdings

Custom Drywall, Inc.

Gopher Stage Lighting, Inc.

Haldeman-Homme / Anderson Ladd°

McLaughlin Gormley King Co.

Padilla Speer Beardsley

Rupp Industries, Inc. / TEMP-AIR°

Slumberland Furniture°

Smith Foundry Company

Robert S. Starr Foundation

Steinwall, Inc.°

UMI Company, Inc.

\*Deceased

°Donor for ten consecutive years or more



**GIFTS OF ART AND FUNDS FOR ART ACQUISITION UP TO \$10,000**

*(Continued from page 31)*

Anonymous (3)  
Dr. James L. and Bambi P. Anderson  
Mr. and Mrs. Peter W. Anson  
Michael and Ann Birt  
Mike and Kay Bochart  
Mary Livingston Griggs and Mary Griggs Burke Foundation  
Eric Dayton  
Elaine V. Dennett  
Richard Flood  
Edith and Norman Garmezy  
Eric Newman and Janice Gepner  
GMAC-Residential Funding Corporation  
Jennifer Gross and Jerry LeFevre  
Ted Hartwell  
Don Helgeson  
Friends of the Decorative Arts at the High Museum of Art  
Historical Design Collection, Inc.  
Gary and Gretchen Holland  
Ruth and John Huss  
Beth and Gene Karjala  
Paul Koether  
Dr. Evan Maurer  
Terrence McGann and Jean Burke  
Maurice Milsten  
Christopher Monkhouse  
Kay Olmsted  
Jeanne E. Pemble and Joel Poeschl  
Mrs. Edmund Phelps, Jr.  
Print and Drawing Council  
Mrs. Erle B. Savage, Jr.  
Andrew and Kathleen Scott  
Dr. Richard L. Simmons  
Jack Slentz  
Howard and Merna Smith  
Mrs. David S. Williams

**CONTRIBUTORS' CIRCLE MEMBERS**

**The following members of the Contributors' Circle provide valuable support of the Annual Fund and the museum's accessibility, exhibitions, and education programs and services.**

**Sustainers**

**\$1,000-\$1,499**

Anonymous  
Ruth M. Anderson°  
Woodbury H. and Cynthia Andrews  
Elizabeth H. Andrus  
Melanie and Charles Barry°  
Beverly Bjella  
Dr. and Mrs. Michael Bromer°  
\*Mr. and Mrs. Sheldon V. Brooks  
J. T. and Terry Bumgarner  
David and Mary Cost through The Charles Piper Cost Foundation  
Susan Engel  
Mrs. Marja Engler  
Scotty and Peter Gillette  
Robert and Susan Greenberg  
Mr. and Mrs. Joseph F. Grinnell  
Daniel and Jean Grote  
David A. Gutzke and Jeanette Colby  
Sam D. Heins and Stacey Heins  
Kathrine Hill  
Keith and Heidi Jacob  
David Johnson and Cecilia Motzko°  
Edward Juda  
Jane and Jim Kaufman Fund of The Minneapolis Foundation  
Philip Koether and Marc Curyer  
Mr. and Mrs. Daniel Kunin°  
Joan and Joe Lapensky  
James and Mary Lawrence  
Mr. and Mrs. Dale Lindquist  
Dan and Helen Lindsay  
Weiming and Caroline Lu°  
Nancy and Roger McCabe  
Drs. Mary and Joseph Meland  
Sandy and Bob Morris  
Marla and John Ordway  
Constance S. Otis°  
Mr. and Mrs. Stephen Pflaum  
Judith and Steve Shank  
Mr. and Mrs. Robert J. Sivertsen  
Emil and Emily Slowinski°

Robert D. and Marilyn C. Thompson  
Ricardo and Donni Torres  
Ruth Spiegel Usem

**Sponsors**

**\$600-\$999**

Terrill K. Albinson  
Mary Ellen and Peter Alden  
Barbara Alli  
Mr. Joe Andersen  
Rainey Anderson°  
Mr. and Mrs. William C. Ankeny°  
K. M. Ansbaugh and S. F. Holbrook°  
Ted and Ruth Arneson  
Daniel and Barbara Balik°  
Laird H. Barber  
Roger Benjamin°  
Ray and Carol Bergeson°  
Anita M. Bertelsen  
Muriel Bochnak°  
Paul and Helen Bowlin°  
Mr. and Mrs. John L. Brooks  
Mary Janet Cargill°  
Mr. and Mrs. David Choate  
David and Margaret Christenson°  
Mrs. Edward F. Cina  
Judith Z. Colton  
Mary Sue Comfort  
Mr. and Mrs. John S. Curtin°  
Ardell B. Davis°  
Mae and Toby Dayton  
Kathleen and Douglas Drake  
Joy H. Erickson°  
Dr. and Mrs. Milton Ettinger  
Carol L. Fedorchak  
John and Dianne Fenyk  
Sheldon and Terry Fleck°  
Alexander and Helen Frey  
Norman M. Gabrick°  
Kennon and Diane Gardner°  
Mrs. Dorothy Geis°  
John and Janet Gendler°  
Drs. William and Susan Gerberich  
Wayne and Meg Gisslen  
Owen P. and Roxanne S. Gleason  
Mr. and Mrs. John D. Gould°  
Denis Grande  
Deanne and John Greco°  
David Hanson and William Biermaier  
Mr. and Mrs. John W. Hedberg  
Alan and Mary Boyd Hesdorffer  
Richard Higgins and Carrie Higgins

James and Ann Howard Family Fund of The Minneapolis Foundation  
Fred and Collette Ibeling  
James Jelinek and Marilyn Wall  
Andrew Kiernan  
Gary H. Knutson  
Pat Laberge°  
Winnifred A. Larson  
David and Sharon Lentz°  
Jeanne and Albert Levin°  
Delores and Sheldon Levin°  
Thomas and Martha Link  
Catherine and Peter Lupori°  
Deborah and Peter Mahon  
John and MaryAnne Mauriel  
Pat McCartin and Paul Luttio  
Michael and Susan McKinney°  
Donald McNeil and Emily Galusha  
Eric J. Meester  
Byron and Beverly Meyer  
Mr. and Mrs. Charles A. Miller°  
Maurice Milsten  
Dr. and Mrs. James H. Moller°  
Thomas G. Morgan and Concepcion C. Morgan  
Ted and Judy Nagel  
Mrs. Richardson B. Okie°  
Mr. and Mrs. David R. Page  
Mr. David L. Peach  
Alan and Jane Peterson  
Verna Rausch°  
B. and S. Reynolds  
Ruth Roberts  
Norton Rockler  
Jeffrey T. Rodmyre  
Joanne and Jonathan Rogoff  
Leah and Scott Rued  
Paul and Pat Sackett  
Dianne and Jim Safley  
John Sandbo and Jean Thomson  
Mr. and Mrs. Tom Sanders  
Gail and Henry See  
Andrew J. Shea  
Katie Sidenberg  
Sieff Family Foundation  
Dr. and Mrs. Kenneth Siess  
Edward and Anne Sovik°  
Frances and Leonard Spira°  
Mark and Wendy Stansbury-O'Donnell  
Michaela Lynn McCarron and Mike Stapp°  
Sharron Steinfeldt°  
Dr. William and Judith Stephens°  
John and Nancy Strom°  
Michael Symeonides°  
John Thomson

Walter Treichel  
Betsy and Paul Von Kuster  
W. Walker Fund Inc.—Elaine B. and Walter W. Walker  
Mr. and Mrs. Charles McIntyre Webster°  
Mrs. Bernard (Kiki) Wien

**Supporters**

**\$300-\$599**

Anonymous  
Dr. and Mrs. John F. Alden°  
Patrice and Gary Alkire  
James and Elaine Allen  
Diane Laura Amell°  
Nancy Anderly  
Brad and Janet Anderson  
E. Viktoria Anderson°  
John C. and Alice A. Anderson°  
John and Sandra Camene Anderson  
Marianna G. Anderson°  
Quentin and Mary Anderson  
Bob and Nancy Anderson°  
Thomas P. Anderson°  
Victor and Marianne Anderson  
Robert Andrews Jr.  
Paul Antelman  
Mary Ann Archer  
Philip Asgian  
Ron and Kay Bach°  
Ruth and Dale Bachman°  
Karen Bachman and \*James Read°  
Mr. and Mrs. John M. Bailey°  
Carole and Douglas Baker Fund of The Minneapolis Foundation°  
Otto and Mary Bang  
Howard M. Bard  
Jacqueline Becklund and Mike Hetzler  
Mary and Keith Bednarowski  
Mrs. Lanelle C. Beil°  
Dr. Richard and Kay Bendel  
Elisabeth Bennett  
Mrs. Margaret Benson°  
Barry Berg and Scott Ellingboe  
Kathryn Berg°  
Brian T. Bergie  
Mr. and Mrs. John E. Bergquist  
Helen and Gary Bergren  
Randy and Marcy Betcher°  
Madeline Betsch°  
Sondra Beuning  
Dr. and Mrs. Richard H. Bick  
Jonathan S. and Lois B. Bishop°  
Richard and Gail Bliss°  
Frank C. Blodgett

Victor Bloomfield and Elsa Shapiro  
Virginia L. Boehme°  
Angela M. Bohmann and Jonathan Riehle°  
Gina Bonsignore and Richard Garber  
Dr. Lee A. Borah, Jr.  
Mary S. Bowman  
Mr. and Mrs. Thomas R. Breslin  
Mona W. Brown  
Thomas L. and Joyce E. Bruckner°  
Martin and Donna Bruhl  
Philip and Carolyn Brunelle  
Stephen W. Buckingham and Elizabeth M. Buckingham  
Tyrone and Delia Bujold  
Mrs. Milton Bullock  
Leslie and Steven Bush°  
Mr. Peter K. Butler°  
Ann and Glenn Buttermann  
Mary C. Cade  
Charles Calhoun°  
Mr. and Mrs. Edward J. Callahan, Jr.  
Mr. John Callen  
Char and Bill Carlson  
Mrs. Jane Carlson and Mr. Thomas D. Carlson  
Dr. Alan E. and Ruth A. Carp  
Catherine and Joseph Carroll°  
Mr. and Mrs. Richard W. Carthaus°  
John P. and Anne S. Caruso°  
Collins and Barbara Cavender°  
June S. Cavert and H. Mead Cavert°  
Cecil and Penny Chally  
Mary L. Charles  
Thomas Charpentier  
Jean and Frank Chesley°  
Imogene Christian°  
Laurie A. Chu  
Richard and Jean Clarke°  
Dr. Fred Clary  
Mr. and Mrs. David Coggins, Jr.°  
Mr. and Mrs. James Colvin, Jr.°  
Jody and David Cooley  
Val and Kathleen Coppo  
Sage and John Cowles°  
Susan Crawford  
Sally and John Cuninghame  
Mr. and Mrs. Charles Cunningham  
Mr. Todd Cunningham  
Kelly R. Davis°  
Mary Elise Dennis  
Susan and Paul DeNuccio  
Jerome Dial

Grant M. Dolezal°  
Sara and John Donaldson°  
Ruth S. Donhowe°  
Mr. F. Edmund Donoghue  
Terry Donovan  
David and Mary Doty°  
David and Pat Drew  
Sylvia F. Druy  
Frank and Sarah Earnest  
James Eastman and Cynthia Kriha  
Ron and Rhoda Ebersole  
David B. and Mary Jo Eide  
Katherine and Kent Eklund°  
Carol and Mark Engebretson  
Phyllis Ericksen and Gayle Ericksen  
Bonnie and Mario Esposito  
Patricia Fair  
Basil and Lidia Filonowich°  
Barbara and Paul Finkelstein  
Cynthia L. Fleming°  
Hillary J. Freeman and Carol J. Mork  
Jennifer and Stephen Frenz  
Carole and Roger Frommelt  
Cindy and Perry Fuerniss  
Xavier G. Gagnon  
Mary Ella Galbraith°  
Mr. and Mrs. James P. Gardner  
Edith and Norman Garmezy  
Jim Geisler  
Mr. Michael J. Gelking  
Mary Genz  
Lois D. Gernbacher°  
Lin Summerfield and Stan Gibson°  
David and Gerry Giese  
William Gilbreath and Carla Ryti°  
Doug and Gretchen Gildner°  
Marie and David Goblirsch°  
Richard P. Goblirsch°  
Marvin E. Goldberg, M.D.  
Mr. Jim Grantman  
Sandra Pillsbury-Gredzens°  
Max B. Green°  
Ms. Anne Marie Gromme  
Olive C. Grose  
Susan and Bert Gross°  
Miss Audrey M. Grote  
Karl Groth and Carol Stoddart°  
Ms. Julie A. Gudmestad and Ms. Amy Gudmestad°  
Dan and Kay Gustafson  
The James L. and Jane Dayton Hall Fund of The Minneapolis Foundation  
Lynn Handlos  
Anne Hanley and George Skinner°

Ruth and Harlan S. Hansen  
Philip M. and Margaret S. Harder Fund of The Minneapolis Foundation  
Eleanor Harris  
Mr. and Mrs. Robert D. Hart°  
Mr. and Mrs. William F. Hartfiel, Jr.  
Mani Hassan  
Dan Hathaway°  
Martha and Douglas Head°  
Carol Heaton  
Mr. and Mrs. Gordon E. Hed°  
John and Elizabeth Heefner  
Anne and Peter Heegaard  
Jayne Helgevoid and Bob Bledsoe  
Virginia S. Henderson  
Mr. and Mrs. Kenneth A. Hengler°  
Phyllis and Dennis Hepp°  
Mrs. Roberta M. Herrell  
Mr. and Mrs. Gerry Herringer°  
Dale and Linda Herron°  
Lila Hertzberg°  
Mary Hicks  
Johanna Maud Hill  
Peggy Ann Hoeft  
Susan M. Hoel  
Barry and Kristi Holden°  
N. D. and J. M. Honnigford°  
Mr. and Mrs. David A. Horan  
Dr. and Mrs. Arthur J. Horowitz°  
Mr. and Mrs. John R. Huff  
Tom and Dee Dee Hull°  
Diane Robinson Hunt  
Warren and Mary Ibele  
Aref and Barbara Jabr  
John and Barbara Jacoby°  
J.W. Jaglo Family°  
Frank and Lucretia Jesse  
Eric Johansen and Molly Murphy Johansen  
Miss Ardes Johnson  
Beverly and Jerry Johnson  
Brian and Susan Johnson  
Gary M. Johnson and Joan G. Hershbell°  
Mr. H. Allen Johnson°  
JoAnn Johnson and Abby Brogden°  
Marjorie A. R. Johnson  
Richard Johnson and Mary Kalish-Johnson°  
Dr. Charles Johnston  
Julie and David Jones°  
Mr. and Mrs. Douglas C. Jones  
Dr. and Mrs. Charles R. Jorgensen  
Dr. and Mrs. William J. Kane  
Joy and Sidney Kaplan°

°Deceased

°Donor for ten consecutive years or more



Mr. and Mrs. Richard E. Karkow  
Bruce A. Kessel°  
Patricia G. Kielb°  
Carole and Joseph Killpatrick  
M. J. Kimrey  
Helen M. King°  
Ms. Patricia Kinne  
Helene M. and Robert Kisch°  
Drs. Lee and Tillie Kitzenberg  
David and Mary Beth Koehler°  
Ted and Marjorie Kolderie°  
Lori and David Krieger  
Dr. Robert L. Kriel and Dr. Linda E. Krach°  
Lindsay Kruh°  
Alison Krupa-Parks and Fred Parks  
Mr. Spencer Kubo and Ms. Adele DellaTorre  
Albert and Catherine LaFreniere°  
Dr. James and Sally Lakin°  
Judith and W. F. Landreth  
Laura Beth Landy  
Kirsten and Alan Langohr  
Marcia Cheney and Arthur Larsen  
Martha C. Larsen, M.D.  
Kurt and Connie Larson°  
Don and JoAnn Leavenworth°  
Sally and Ernie Lehmann  
A. Patrick and Katherine M. Leighton  
Ms. Dawn Lemke and Joseph Homrich  
Kathleen Lenarz°  
Wally Lentz and Susan Nixon  
Diane and Michael Levy  
Peg and Dick Lidstad  
Mrs. Drake J. Lightner°  
Stacy Lindbloom  
Debra Linder  
Rebecca Lindholm  
Dr. John and Evodia Linner  
Gerald and Rose Linnihan  
Dan and Mary Beth Liska  
Ms. Ricky Littlefield°  
John Loban and Jean Kummerow  
William H. Lohman and Ann Dillon  
Mike Loushin  
William and Pamela Lowe  
Ann Lowry  
Dr. and Mrs. Richard R. Lund  
R. W. Lyons°  
Susie and John Mackay  
Mary Ann and Everett MacLennan°  
Dr. and Mrs. Elias Mahigel°

Steven G. Mahon and Judy Mortrude  
Marv and Ruth Mandery°  
Paul and Nelda Marecki°  
Mr. and Mrs. James P. Martineau  
Dr. John and Joyce Matsuura°  
Daniel M. Mayer  
Stacey McAnelly and Chad McAnelly  
John W. McConnell, M.D.  
Malcolm McDonald  
Mary Tuss McEvoy, D.D.S.  
Mr. and Mrs. R. D. McFarland°  
Mr. and Mrs. L. J. McGough  
Carla McGrath and Cole Rogers  
Mrs. Jennifer McIntosh°  
Mr. and Mrs. J. Lawrence McIntyre  
Marlene J. and James J. McKeown°  
David and Laura McLean°  
James McMenemy°  
Prof. and Mrs. Harold McNabb Jr.°  
Richard and Sharon McNamara  
Helen R. McNulty  
Fran Megarry  
Joan Mellen  
Kathleen Menard°  
James and Laura Miles°  
Laura K. and Craig L. Mollet  
Julie Morath and Don Morath  
Louis and Jean Nelson  
M. Patricia Nelson°  
Marybeth Nelson°  
Karen Nemchik and Tariq Samad  
Martin and Barbara Nergaard  
Mr. and Mrs. Norman Newhall  
Mrs. Ardis H. Nier°  
Dennis and Catherine Niewoehner  
Diane L. Nimmer  
Jeri Norbeck  
Donald H. Nordstrom  
Kathleen R. Novak and Michael R. Niedenfuehr  
Mr. James O'Hara and Mrs. Marjorie O'Hara°  
Rita and Benedict Olk°  
Mr. Dennis R. Olson  
Frederick and Sharon Olson  
Dr. William O'Neill  
Karl-Thomas Opem  
Louise Otten  
Joyce and Mike Palazzotto°  
Mike and Kelly Palmer  
Dr. Greg and Susan Path°  
Jeff and Edie Patterson  
Bill and Barbara Pearce

Karen Pedersen  
Ellen Perl and Frank Noel  
Roger Peters and Lorna Reichl  
Doris L. Peterson  
Earl A. Peterson°  
Roy and Faye Peterson°  
James and Joan Peterson  
Cecily Hines and Thomas Pettus  
Mr. Thomas T. Peyton  
Gloria Phillips and \*Reuel Phillips°  
John and Norma Pierson  
Kolean A. Pitner and Richard G. Wilson°  
Mr. and Mrs. Charles Pitschka°  
Rebecca Planer°  
Joseph and Wendy Postier  
Durand and Mary Sue Potter  
Heidi and Greg Preslicka  
Mr. and Mrs. William R. Priedeman  
Connie and Jim Pries  
Mr. and Mrs. Nicholas J. Puzak  
Elin Raymond  
Mary and Clyde Reedy°  
Carl J. Remick  
Louisa H. Richardson  
Darin and Laura Rinne  
Dorothy Robb°  
Mrs. Patrick Rogers  
C. F. and Helen Roland°  
Carlos Romero and Gabriela Romero  
Marian and Kenneth Rose°  
John and Julie Roth  
Marjorie and Richard Roth°  
Renee Roth  
Susan Rottunda and Tim Vaughn  
Mr. and Mrs. Curtis L. Roy°  
Karen Rubin and Russ Rubin°  
Mr. and Mrs. Dudley M. Ruch  
Burton and Berneen Rudolph°  
James and Sandra Rummel  
Harold and Elaine Rushton  
Ms. Patricia Ryan  
Mr. and Mrs. Patrick G. Ryan  
Mr. and Mrs. D. D. Ryerse, Jr.°  
Karen Rylander  
Larry and Nancy Saliterman  
Carol Mae Sandstrom°  
Paula C. Sanford°  
Michael and Shirley Santoro°  
Mr. and Mrs. Robert H. Sayre  
Lee Schacht°  
Mr. and Mrs. Vincent Schaefer  
Jean Schlammer  
Mr. and Mrs. James Schwarz°  
H. A. Schwind  
William H. Seely°  
Herbert and Suzanne Sewell°

Dr. Irving and Janet Shapiro  
Richard and Mary Shapiro  
Lynda B. Sharbrough  
Catherine Sheehan  
Mary D. Shepherd°  
Elizabeth Short and Kirkland Cozine  
Mark and Mary Sigmond°  
Artice and Morton Silverman  
Paul Simons°  
Mary Jo and Ommund Skaar°  
Anthony M. and M. Heather Smith°  
Dean and Jacqueline Smith  
Marilyn and Wes Smith°  
Mr. and Mrs. Roscoe S. Smith  
Vanessa Smith  
Linnea Sodergren  
Louise and Curtis Speller  
Mrs. Charles E. Spevacek  
Daniel J. Spiegel and Family  
Jack and Charlene Spindler°  
Karl Starr and Christopher Haug  
Kathleen Steiger  
Mrs. Donna H. Stein°  
Mr. Richard Stiefel and Ms. Lisa Vanvalkenburgh°  
Mr. and Mrs. Michael J. Stolee°  
Michael and Marlene Streitz  
Kim Strobel  
Charles James Suk  
Mr. Everett Sutton  
Mr. and Mrs. Donald J. Swanson°  
Dorothy Swanson°  
Mr. and Mrs. John H. Swanson°  
Kent and Susan Swanson°  
Marjorie A. Swanson°  
Wesley Swanson°  
Sarah B. Swarts  
Mr. and Mrs. Henry L. Sweatt  
Carletia F. Sweet  
Dr. and Mrs. Richard V. Swenson°  
Diane Syme  
Edwin and Beverly Thiede°  
Brian W. Thomas  
Missy Thompson and Gar Hargens  
Mr. and Mrs. Richard A. Thompson  
Thomas A. and Jean L. Thompson  
Lowell A. Thornber°  
Mr. and Ms. W. Trenda  
Frank D. Trestman  
Noelle and Jeff Turner  
Deera and Albert Tychman  
Katy and Dewayne Ullsperger°  
Denis Utgaard  
Noel Keane Van Tol

John and Susan Vawter°  
Nancy and Douglas Verdier  
Christopher Volner  
Mike and Jody Wahlig  
David Waldemar  
Donavan and Rachel Walsh  
Robert and Susan Warde°  
Nancy and David Warner  
Ben and Katrina Wasscher  
Dennis Watson°  
Robert Webster  
Susan L. Webster°  
Mary Jane Weible°  
Cass Well  
Dr. and Mrs. Irwin D. Weisman  
Orville Weiszhaar and Julie Sirek°  
Nancy Werner-Azarski and Jim Azarski°  
Deborah Wexler and Michael Mann  
John and Mary Wheeler  
Maureen and Terry White  
Susan and Rob White  
W. Joseph White  
Robert B. Whitlock and Margaret R. Weber  
Mrs. Nedra M. Wicks and Mr. John Wicks°  
John M. and Debra C. Wilkinson°  
Marion and Dave Williams°  
Audie J. Willis°  
John and Diana Windhorst, Jr.°  
Mr. and Mrs. Robert Witte°  
Molly and William Eoehrlin°  
Nancy and Robert Woodburn  
Dr. and Mrs. F. C. Wuest°  
James C. and Kathlyn R. Wyman  
Marcia Henry Yanz°  
Dr. and Mrs. V. Richard Zarling  
Mr. and Mrs. Larry Zelle°

**Reciprocal**  
**\$200-\$299**

Anonymous (3)  
Stu Abraham  
David Abramson  
Katherine J. Aby  
Jay R. Addy  
Dr. and Mrs. N. John Akimoto°  
Elaine Albenberg°  
Robert S. Alberg and Margaret Purcell°  
Ms. Marty Allen  
Betsy Allis and Bill Elwood  
Mr. Richard A. Allison  
Pauline Altermatt  
F. M. B. Amram and S. A. Brick°

Steven M. Andersen°  
Dr. and Mrs. Charles S. Anderson  
Elwood and Judy Anderson°  
George and Kristine Anderson  
Lloyd L. Anderson and Christian O. Fritzberg  
Marvel A. Anderson°  
Nancy L. and Evan Anderson  
Steven Q. and Lisa C. Anderson  
Mike and Leigh Andrews  
David and Joan Angell  
Dr. Howard Ansel  
Richard Antone and Kirsten Sonbuchner  
Ms. Phyllis Appelbaum  
Gordon Apple and Susan Thornton  
George and Connie Aram°  
Eldon and Katie Arden°  
Diane L. Armitage  
Dianne and Robert Arnold  
Catherine and Frederick Asher°  
Linnea and Jon Asp  
June J. Aspenson°  
Mrs. Barbara Bach°  
Thomas E. Bailey  
James Baillie and Jacqueline McGlamery  
Gary and Gail Balego°  
Thomas H. and Jill Barland°  
Mary Barrett°  
Kristin Bartel  
Vincent and Susan Barton°  
Kay Barzen  
Valarie Anne Bauer  
Mr. and Mrs. Glen A. Bean  
Fran Beard  
Ronald and Joyce Beauchane  
Rosemary Beaurline  
R. J. Beckel and S.D. Lyle  
Greg Becker and Tessa Marchessault  
Cecelia V. and John W. Beecher  
Deborah and Bill Begin  
Ron Beining and Mark Perrin  
Donna and Mike Bell  
James and Catherine Benjamin  
Patricia E. Benn°  
Paul and Barbara Benn  
Dominique Bereiter  
H. Ronald Berg  
Nancy and David Bergerson Family  
Dr. R. Edward Bergmark and Ms. Sally Kroon  
Fred and Sylvia Berndt, Jr.°  
Sid Berquam°  
James Berry  
Sarah Beuning  
Margaret and Jim Bird

Ann and Myron Biros  
Kris Bjorklund  
Lauren Baker  
Mr. and Mrs. James L. Blilie°  
Richard and Bette Ann Bloom°  
Mr. and Mrs. Herbert N. Bloomberg  
Ms. Mary Blowers and Mr. Michael Eckhardt  
Dr. Paul and Carlyn Blum  
Dr. Henry Blumberg  
Susan and Janis Blumentals  
Mary Webb Boarman  
Jerome J. and Dolores M. Bock  
Janet and John Bohan°  
Mr. and Mrs. Wallace C. Bohrer°  
Julie and Virgil Bolton  
J. Booty  
Rich and Jane Borchers  
Allison O. Borgeson  
Ruth Bornholtz  
Anthony Bosca  
Linda and Andrew Boss  
James Bradeen  
Mr. John R. Brand  
Robert Bras and Julie Matonich  
Nancy Ann and David Earl Brasel  
Evelyn and David Breeden  
Susan Brickley  
Dava and David Briggs  
Neil Bright and Judy Cowden°  
David R. and Irma L. Brink  
Carolyn Britton  
David E. Broden and Lonnie Broden  
Mary Beth Brody  
Robin and Gregg Brooksbank  
Lynn S. Brown and Charles Brown  
Dr. Mary Dunn Brown  
Sally Brown and Chad Breckenridge  
Nicholas and Susan Brown  
Mr. and Mrs. Thomas M. Brown  
Ila June Brown-Pratt and James Pratt  
Theresa and Lester Bruncker  
Robert and Lucy Brusie°  
Mr. Jim Burbeck  
Michael and Susan Burnett°  
Timothy A. Burns°  
Linda and Laurence Burstein  
Harriet Busdicker  
Joyce and Pierce Butler  
Mary Cajacob and Peter Eisenberg°  
Dr. and Mrs. Herbert Cantrill°  
Marsha Cargill

Mrs. Mary P. Carlsen  
Nancy and Mark Carlson  
Richard A. and Jennie P. Carlson  
Richard and Mary Lou Carlson  
Mr. and Mrs. N. W. Carnes°  
Emmett F. Carpel, M.D. and Katherine Meehan°  
Betty and Vern Carver°  
Melissa Abrams Caulfield  
John and Katha Chamberlain  
\*Dr. and Mrs. Lorne Chanin°  
Kristen Nelson and Richard Cheeseman  
Joseph E. Chenoweth and \*Constance Chenoweth  
James L. Chosy and Julie Knox Chosy  
Mr. and Mrs. Bruce Christensen°  
Judith Christensen  
Janet and Gary Christenson°  
Julia Christians and Ray Lallier  
Betty and Ed Clapp  
Cynthia and Klaus Clark  
Lynne Clay  
Kathleen E. Cleary°  
David and Donna Clemenson  
Carolyn S. Clemmons°  
Hiram and Liz Cochran°  
Edward and Elizabeth Colburn  
Jan and Tom Collett  
Karen Competente and Michael Millar  
Rosemary and Jerry Conroy°  
Miss Carol Cook°  
Robyn and David Cook°  
Frederick Cooper and Helen Foster  
Page and Jay Cowles  
James L. Crabb and Judith A. Ney°  
Steve Craney°  
Dr. William H.H. Cranmer and Carol P. Cranmer  
Mrs. Robert W. Cranston°  
Cathy and Frank Crescioni  
Rich Cress and Maggie Johnson  
Denise and Steve Cronin°  
Sarah Crouch and Mic Johnson  
Mr. and Mrs. Douglas Crowther°  
Christine Cunnington  
Joan Curtis and \*Philip Curtis°  
Katie Czukas and Brian Safyan  
Laurie Dahl  
John and Jackie Dahler°  
Mr. and Mrs. Ross A. Dahlin  
Mr. and Mrs. H. David Dalquist  
Gretchen and Matthew Damon  
Charme Davidson

\*Deceased  
°Donor for ten consecutive years or more



Mary Davidson  
Joy Davis°  
Tom E. Davis°  
Doug and Deb De Leeuw  
Nellie DeBruyn and Thomas Hatch  
Robert and Lori Deichert  
Rory and Ane-Grethe Delaney  
Liz DeMarais  
Marie Deputat  
Mr. and Mrs. L. DeSimone°  
Genevieve Desmond  
Ray Devogel and Donna Linden  
Dirk deVries  
Ms. Mary Dew and Mr. David Miller  
Mrs. Marcelle Diedrich  
Dave Diehl and Rebecca Murray  
Thomas and Kathleen Diffley  
Mr. and Mrs. H. P. Dilworth  
Eugene DiMagno  
Robert and Mary Dinerstein  
Joe Dixon°  
Keith M. and Linda Donaldson  
Tom and Maggy D’Onofrio°  
James and Dee Dorsey°  
Kyia Downing and Kirk Horstad  
John and Maureen Drewitz  
Edward and Jo Anne Driscoll  
Kristin and Robert Dudacek  
Mrs. Carol Duff  
Mary and John Duffy°  
Linda and James Duncan°  
Mrs. Robert R. Dunlap and \*Mr. Robert R. Dunlap°  
J. A. Durades°  
Mr. and Mrs. Michael D. Durham  
Pierre C. and Anne H. Dussol°  
Mary M. Dworsky°  
John and Mary Easley  
David and Holly Ebel  
Nancy Ebner and Robert Decker°  
Colleen and Michael V. Eckman  
Jeanne Eddy and Lee Renz°  
John H. and Shirley Edmonson  
Rev. Michael L. Edwins  
Jane and Barry Effress°  
Genelle and Miles Efron  
Maria K. Eggemeyer  
Nicholas and Janet Eian  
Joanne B. Eicher  
Neal Eisenbraun  
Michael Elliott  
John and Sue Elsinger°  
Sara Engelbert  
Maureen Engelhardt  
N. Rolf and Nancy Engh

Rebecca Enos  
Gael Entrikin and Raymond Schmitz  
Mary Erbele  
Beth Erickson  
Thomas Erickson and Katherine Solomonson  
Dr. Robert and Virginia Etem°  
Dr. Donnell and Helen Etzwiler  
Jerry Evenrud°  
Mary Evenson°  
Ken and Jill Ewald°  
Kyle Falconbury and Julie Joyce  
Ms. Ann Fankhanel  
Damon and Becky Farber  
Thomas and Jacquelyne Farm  
Jeff and Pat Farni°  
Stephen and Susan Feinstein°  
Diane and Michael Feldman  
Mr. Matt B. Fellner  
Ms. Barbara J. Felt  
Suzanne Fenton and Daniel Lieberman  
Charles and Anne Ferrell  
Ms. C. M. Fiedler  
Michael and Holly Finch  
Cathie and Jerry Fischer°  
Mr. John O. Fitch and Ms. Jane E. Schuldt  
Laurie Beth Fitz  
Richard Flenniken  
Andrew Flesher and R. Thomas Gunkelman  
Donnie and Jerry Flora  
Edward and Karen Florez  
Florence Flugaur  
Ms. Catherine A. Flum and Dr. Susan J. Wolfe  
Susan and Tony Flygare  
Frances Foley  
Dr. and Mrs. William Foley°  
Kim Ford and Rob Werling  
Joan Forester°  
Arlene and Brad Forrest  
Denise and Aane Fosse  
Mr. and Mrs. Eugene F. Foster°  
Doreen Frankel and Jake Hurwitz  
Carol Freeman°  
Dr. L. Ronald French  
Rodney and Sally French°  
Sheryl A. Fried  
Marc and Kristi Fuller  
Dr. and Mrs. Stephen Gadiant°  
Mohrghaine Gaia and Gary Gable  
Gene and Catherine Gaines  
Bonnie and Phillip Gainsley  
Jon Garber  
Jeffrey R. and Holly Gatesmith°  
Dr. Emanuel P. and Mrs. Cecilie Gaziano

Richard and Suzanne Geise  
Mr. and Mrs. Howard Gelb  
Tim Geoffrion and Jill Geoffrion  
David Gerdes  
Dan Gerhan  
Susan Gerstner and Dan Carlsen°  
Mr. and Mrs. James Gesell°  
Frances Gladish  
Ms. Kathryn L. Glessing  
Dr. and Mrs. Fredarick Gobel  
Ramsis and Norma E. Gobran°  
Ursula and Ralph Goebel  
Carla T. Goers  
Richard D. and Kathleen R. Goff  
Mel and Judy Goldfein°  
David F. and Rosemary Good  
Robert and Katherine Goodale°  
Ernest and Malka Goodman°  
Lynn and John Goodwyne  
Eileen Gorrell°  
Jon K. Gossett  
Mr. and Mrs. Irving Gottesman  
Karen Grabow  
Sara K. Graffunder  
Susan Gray and Paul H. Waytz°  
Dean and Marilyn Greenberg  
Edward and Laurie Greeno  
Jane and David Gregerson  
Larry and Zylpha Gregerson  
Kay and Owen Gregg°  
Kathleen Grendahl°  
Mr. and Mrs. Einar Grette°  
Ronald and Stephania Greve  
Charles and MaryJo Griffin  
Roger and Marilee Griffin  
Sue Griffith  
Gregory Grinley and Raymond Terrill  
Ray Gritche°  
Richard and Carole Guthrie  
Sandra J. Hale  
Nils and Heather Halker  
MaryJo and Mark Hallberg  
James and Dorothy Halverson  
Ms. Marcia Halvorson  
Mr. and Mrs. Michael W. Halvorson  
Margaret and Raymond Hansen  
Barbara Hanson and Kent Hanson  
David and Miriam Hanson°  
Glenn Hanson  
Jane Hanson°  
Nancy Hanson  
Paul David Hanson°  
George Harding°

John Harrer and Kate Ellis  
Brian F. Hart  
Meredith and Fraser Hart  
Steve Haskin  
Ruth and Ruby Hass  
A. E. Hauwiller°  
Frederick Hay  
Darlene D. Hays and Robert T. Hays  
Constance Heath°  
Mr. Mark Hedin  
William and Deidre Hedrick°  
Robert and Joyce Hegstrom  
James and Jelan Heidelberg  
Cheryl and Mark Heley  
Karen and Jon Helgason  
Marjorie J. and Donald A. Helmer  
Ms. Laurel Hendrickson  
Frank and Jane Hennessy°  
Doug Henry  
Sean and Teresa Henry  
Arthur and Frances Hibbs  
Robert C. Hickcox and Jacqueline Henry  
Robert and Jen Hicks  
Dick E. and Anne Higgins  
Faith Higham  
Arnie and Shirley Hill  
Richard Himes°  
Mary Abbe Hintz°  
Gordon and Lou Hirsch°  
Tom and Kathleen Hobday  
Rochelle Hoffman  
Susan Hoffman  
Mrs. Nan Holland°  
Michael and Kris Holmquist  
David and Marjorie Hols  
Ms. Laurel Holschuh and Mr. John Grimstad  
Denise Holtz  
Sara Homeyer  
Mary Ann Honetschlager  
Mr. and Mrs. William B. Horn°  
Jonathan Howard  
Peter A. and G.L. Howell°  
Neil and Mari-Sue Howes  
Mike, Christina, Julie and Chip Huck  
Gayle A. Hudak°  
Mr. James Hughes and Ms. Stephanie Daily°  
Susan Humiston  
David and Karen Huse  
David B. Huseth and Patricia Huseth  
Mrs. Sally Fefercorn Hyslop and Mr. David Hyslop  
Frank J. Indihar, M.D. and Anita Pampusch°  
Suzanne and Thomas Inman°

Ms. Mari Ito and Mr. James Brozowski°  
Guy and Nancy Jackson°  
Bernard Jacob  
Ms. Zoe Jenkins°  
Mr. Andrew Jensen  
Mr. and Mrs. F. G. Jewett III  
Sylvia Johanneson  
Dr. and Mrs. Henry A. Johnsen  
Craig Johnson and Juliette Johnson°  
Gary Johnson°  
Karlene Johnson and Keith Abrahamson  
Milly and David Johnson  
Norma F. Johnson and \*Robert Johnson  
Gayle Jorgens and Stanley Wai°  
Carol Joyce and Neal Luebke°  
Phyllis and Don Kahn  
Richard Y. Kain and Katherine S. Frank  
Mr. and Mrs. Michael L. Kalm  
Janet and William Kampf  
Margaret Kane°  
Mr. and Mrs. Gerald Kanne°  
Roma Kansara  
Raye Kanzenbach and Joni MacDonald  
Elisabeth Kaplan and Robert Horton  
Dr. and Mrs. Martin Kaplan  
Charles Kapsner  
Ms. Laurie Karnes  
Michael Kaselnak and Michelle Taylor  
Jane Kasiske  
Virginia P. Kass°  
Gina and Kurt Kastel  
Mr. and Mrs. Denver Kaufman  
Hermann and Janet Kauls  
Harsohena Kaur and Jasjit S. Ahluwalia  
Thomas and Marlene Kayser  
William and Dawn Keenan  
Jasmine Keller  
Thomas A. Keller III  
Mr. Steven Kelley and Ms. Arla Carmichiel  
Mary K. and Steven C. Kennedy  
Mary Kenning°  
Paul R. Kenworthy  
Mr. and Mrs. Jeffrey Keyes  
Brian Kieser and Kathryn Kieser  
Philip Kilpatrick and Virginia Kilpatrick°  
Heather Randall King°  
Ms. Sam King and Mr. James Gertmenian  
Laura Kingbay°  
Mary Reid Kinney

Mary Joy and William N. Kinney  
Karen Kirby°  
Mr. and Mrs. Ansel Kleiman  
Hugh Klein and Judy Lebedoff°  
Thomas Kleinschmit  
Barbara Klemme and Norman Steere  
John Kluznik  
Helen Knight  
Marvin Knoff  
Doris L. Knutson  
Jason Koch and Heather Johnston  
Mr. and Mrs. James Kochiras°  
Jennifer and Michael Koehl  
David Koenig°  
Mr. Erik Kolz  
Jan Konke and Family  
Jill and Chuck Koosmann  
Diana Kootz  
David and Ann Koppe  
Mary Kottke  
Christine Kraft and Nelson Capes°  
Virginia F. Kremen  
Fritz Kroll  
Linda and Paul Krueger  
Dorothy Kuether  
Marilyn S. Kuipers and Dr. Peter W. Kuipers  
Alexandra Kulijewicz  
Mr. and Mrs. Harold G. Kuller  
Hart and Susie Kuller  
Gregory A. Kvam  
Jerome E. Kyllo°  
Lisa and Brad La Nasa  
Jim and Lorraine La Roy  
Bouky Labhard°  
Ann and Paul Laliberte°  
Robyn and David Lamm  
Ernest and Susan Lampe  
John W. and Judith A. Lampi  
Jim and Mary Lande  
Christopher M. Landergan  
Mrs. Deborah Lantz°  
Thelma J. Lareau  
Joan and Eugene LaRowe°  
John E. Larsen and Michael D. Stewart  
Karen and Russell Larsen  
Cynthia Larson  
Joyce Larson°  
Randi Larson  
Alan K. and Peggy Lathrop  
Charles and Patricia Latterell  
James C. Lau°  
John and Ann Laurent  
Ruth and Herbert Lauritzen°  
Ellen Lavin

Dr. and Mrs. James Lawton°  
Ruth and Ben Leadholm  
Michael and Elizabeth Lederle  
Dave and Elizabeth Lee  
Jeannine Lee and Roger Finney°  
Alyce and David Lees  
Paul A. Lefebure and Carolyn D. Silflow  
Jim and Susan Lenfestey°  
David and Mary Jo Lenzen  
P.A.M. and Robert Lesch  
Julie and John Lesser  
Seymour and Virginia Levy  
Thomas and Rhoda Lewin°  
Norbert P. Lickteig  
Kevin M. Lienau  
Mary Susan Light  
Albert and Vandora Linck°  
Ellen Lindseth and Ward Andersen  
Alan and Carolyn Linoff  
Debi Lipkin°  
Malcolm and Suzanne Lloyd  
Marjorie A. Loeffler°  
Ann Longfellow and Dave Bryan  
Ms. Ellen Longmire  
Barbara and Terry Lorinser  
Mrs. Frederick Lott°  
Mari L. Lowe  
Joanne Ortendahl-Lucas and Mark Lucas  
Bruce and Susan Lueck  
Sherry Lund°  
Barbara Lundgren and Thomas Lundgren  
Lynda Lundstrom  
Mary and Gary Lunstad  
Keith and Barbara Lurie  
Sarah Lutman and Rob Rudolph  
James and Anita Lynn°  
Ms. Kris Lubar MacDonald  
Richard W. Hannah and Dustin J. Macgregor  
Dennis MacKany  
Mr. and Mrs. Thomas W. MacLeod  
Eric and Connie MacRostie°  
Dr. Joan Madden and Bill Olson  
Robert Madoff and Jane Korn°  
Helmut and Mary Maier  
Rhoda and Donald Mains°  
David Maitland°  
Diane and John Malone  
Patricia Maloney°  
Mary Ann Mancini  
Anthony and Sarah Manzara  
Donald and Abby Marier

Pauline Mariucci°  
Beverly Markis  
Jennifer M. Marrone  
John and Lizabeth Marshall  
Ms. Carole Martin  
Frank E. Martin°  
Justine Martin  
A. Thomas and Nona Mason  
Vivian M. Mason  
Mary Lou and Donald Mathison°  
Rebecca and James Matson  
Nancy and Grant P. Mattson  
Carolyn and Charles Mayo  
Elizabeth Mayotte  
Mr. James McCarthy and Ms. Gloria Peterson  
Kevin and Gwen McCune  
Jennifer M. McDaniel  
Lisa McDaniel°  
Mr. and Mrs. D. C. McFarland, Jr.  
T. Jeanne McGahee  
Katherine and Timothy McGinley  
Mr. and Mrs. Dan W. McKasy  
H. T. McLain and M. J. Keys  
James and Sally McLaughlin  
Donn and Bonnie McLellan  
Julie and Jim McMerty  
Mary B. McMillan and \*Richard McMillan°  
Peter and Catherine Meier°  
Robert and Kristine Meller°  
Velia R. Melrose  
Todd Meltzer and Sue Skonnord  
James C. Melville and Robin Burton Melville  
Ron and Kim Meshbeshner  
Helen Metz and Perry Ketchum  
Mr. and Mrs. J. S. Micallef°  
Nancy M. Middleton  
Lisa Milan  
Karen and David Miley  
William and Fern Miller°  
Mr. and Mrs. Willard Miller, Jr.  
Herbert Mohring and Jane Larsen°  
Michael J. and Judith H. Mollerus  
Robert Montgomery and Deborah L. Montgomery  
Alfred and Ann Moore  
Sylvia Moore°  
Mrs. Michael Moormann  
Dr. G. Moriarty  
Mary Alice and Larry Mork  
Catherine and Spence Morley  
Mr. and Mrs. Arthur M. Morris°

°Deceased

°Donor for ten consecutive years or more



Ed and Beth Morsman°  
Harold S. and Janet M. Mortenson  
Dr. and Mrs. Donn G. Mosser  
J. Dudley Moylan°  
John F. Mueller  
Mr. Richard Muench and Mrs. Susan Muench  
Paul and Alexandra Muller  
Mrs. Judy Murphy  
E.A. Murray  
William A. Myers°  
Rosanne Nathanson°  
James and Jacqueline Neilson  
Jeffery Nelson  
Mr. and Mrs. Warren Nelson  
Merritt Nequette  
F.H. and Judy Neufeld  
Carol Neumann  
Mrs. D. M. Nicoloff  
Anders Nilsson  
Laura and Kurt Nisi  
Mrs. Robert E. Nord°  
Mr. and Mrs. William Nord  
Dr. and Mrs. Franklin C. Norman  
Lowell and Sonja Noteboom  
Donald E. Notvik  
David Novy  
Mrs. Anne Nygaard  
R. Stanford and Marjorie Nyquist°  
Ms. Anne T. Obermeyer  
Mrs. Norma O’Callaghan  
Joan Ochs°  
Betty M. Ockuly°  
Pat and Paul O’Connor  
Mickey A. O’Kane and Richard Rosenberg  
Kathleen Olchefske  
Eldon and Valerie Oldre  
Paul C. Olfelt°  
Dee Oliveira and Dr. Robert Oliveira  
Mary A. Olsen  
J.R. Olson  
Karen and Robert Olson  
Judy and Burton Onofrio  
Barbara and Edward Orndorf  
Joyce and Paul Ossmann°  
Drs. Steven and Robin Pachuta°  
Howard and Kathy Page°  
John and Mary Pagnucco°  
Bonnie Palmquist°  
Phillip and Lisa Pannell  
Cathy Paper and Tom Bottern  
David and Mary Parker  
Edward Paster  
Mary Pawlcyn and John P. Byrnes°  
Maureen and Gerald F. Pearo

Carol and Michael Pedersen°  
Bruce E. and Nancy K. Pederson  
Rene and Barbara Pelletier  
Jean Pendray Logan and George Logan  
Richard G. Pepin, Jr.  
Wynne and Richard Perkins  
Mr. and Mrs. C. Paul Pesek  
Merrell M. Peters and Ann C. Russell  
Donna Peterson and Gerald Peterson  
Jon Dale Peterson and Melinda Lee Kjarum  
Margaret C. Peterson°  
Paul Peterson and Elise Jones  
Dr. and Mrs. Rodney H. Peterson  
Ann and Felix Phillips°  
Jan and Janet Phillips  
Karin and Dean Phillips  
Mr. and Mrs. William S. Phillips°  
Julie Pierce  
Mitchell Pincus, M.D. and Katherine Pincus  
Marcos and Barbara Pinto  
Mrs. Lawrence Platt  
Patty Ploetz and Edward Matthees  
Ed and Peggy Pluimer°  
Richard Downing Poey and Heidi Poey°  
Dr. Susan Poirot and Mr. Ken Bateman  
Mr. and Mrs. C. J. Policinski  
Mr. and Mrs. Jerry C. Powell  
Kris Ann and S. Steven Prince  
James and Nancy Proman  
Beverly S. Proulx°  
James Puffer and Mrs. Louiva Puffer  
Douglas and Sharon Pugh  
Donald J. and Joyce Pusch  
Anne Pusey  
Laura and Jeff Putnam  
Philip and Dora Quanbeck  
Lee Radermacher°  
Meredith R. Rambow and Adam C. Rambow  
Robert and Norma Ramsay  
D’Ann Ranheim°  
Andrew J. Rapoport and Geraldine A. Rapoport  
Catherine L. Rashid and Alfred J. Rashid II°  
Bruce and Martha Rasmussen°  
Mary and George Raymond  
John and Linda Rebane  
Barbara Redmond  
Suzanne Retzler and Kurt Retzler°  
Mrs. Burt W. Ribnick°

Louise Ribnick and Jerry Ribnick°  
Martin and Dorothy Richmond  
Philip and Mary Rickey  
Donette Rico  
Patrick Riley and Natalie Rohlt  
Verla and Jeff Ring°  
Mr. and Mrs. Daniel Riordan°  
Laurence and Edis Risser  
Mrs. Emma B. Robbins°  
Louise S. Robertson°  
Miss Joanne Robson°  
Gretchen Rocheford-Boman  
Sheldon and Shawn Rockler  
Dr. and Mrs. Robert Rocknem  
Mr. Alvin E. Rogers and Mrs. Laila S. Rogers  
Thomas D. and Nancy J. Rohde°  
Mr. Daniel Rolf°  
Ronald and Glenda Rooney  
Margaret and Michael Roscher°  
Doris Rose  
Michael and Toni Rosen  
Anne M. Rosenberg  
Mr. and Mrs. Larry A. Rossow  
Ms. Beatrice Rothweiler and Dr. Neil Derechin  
Warren and Kim Rottmann  
Robbin Rouillard and Tom Magnuson  
Sara Rouner°  
Miss Brynhild Rowberg  
Mr. and Mrs. Stephen Rowley  
Mr. and Mrs. Thomas K. Rucker°  
Dave Rugg  
Paul T. Runice and Kathleen A. Runice  
Richard and Patricia Rusch°  
Eve and Thomas Rutter°  
Cathy Ryan  
Mr. Richard Sachs and Dr. Geneva Middleton  
Dr. and Mrs. Richard Salib  
Thom and Martha Sandberg  
Jean Sanford and Richard Sanford°  
Ms. Mary Savina  
Kathryn E. Schenk and Allan W. Mahnke°  
Susanne Scherer  
Carol B. Schirmers°  
Peter and Denise Schlesinger°  
Tammy Lynn Schmitt  
Kit and Dick Schmoker°  
Mary Schneider  
Mr. Ralph Schneider  
V. Katherine Gray and Gary R. Schoener  
John H. Schomaker

Christian G. and Mary H. Schrock  
Grace H. Schroeder  
Dr. William R. Schroeder°  
Ronald and Janet Schutz  
Mr. Alan L. Schwartz°  
Mary and Chris Schwartz  
Robert and Karen Schwartzbauer  
Dr. and Mrs. Robert H. Scott  
Carolyn C. Seaton°  
Gregory Sebold and Tricia A. Docherty  
Debbie and Jerry Seliski  
Susan and Jonathan Seltzer  
Mr. and Mrs. Eugene E. Serres°  
Jane G. Severns and Wood Foster  
Mr. Mats Sexton  
Kathleen and Craig Shankwitz  
Ms. I-ming Shih and Mr. Arnold Chu  
Frank and Mitsue Shindo°  
Phil and Barbara Shively°  
Mr. Kevin Shores  
Mr. and Mrs. Samuel Siegel  
Idell B. and Edward Silberman  
James and Carol Simonson  
Margaret L. Simpson and Steve Tsai  
Craig and Nancy Sinard  
Loren and Julia Singer  
Bonnie and Peter Sipkins  
Thomas Sis  
Debra A. Sit and Peter Berge  
Lane M. Skalberg  
Ms. Mary E. Skelley  
Bonnie Skelton°  
James and Jenella Slade  
Dr. and Mrs. G. J. Slosser, II  
Maraline Slovut  
W. Yale Smiley and \*Mrs W. Yale Smiley  
Mr. and Mrs. D. William Smith  
Mrs. Helen T. Smith°  
Dr. James and Joanne Smith°  
Sarah Jeanne Snapp  
Betty and Herman Snyder°  
Angeline L. Sorenson°  
John and Marsha Soucheray  
Fund of The Saint Paul Foundation  
Arne Sovik  
Mrs. Margaret Spear  
Dr. Michael and Sherry Spence  
Ms. Sarah Spencer  
Vicky and Mark Sperry  
Mr. and Mrs. Richard G. Spiegel°  
Patti Spinner and Bob Spinner  
Susan Spray and Edward Lee  
Mary Ann and Thomas Stark

Ray Stawarz  
Paul and Sheila Steiner°  
Mark Steinhauser and Leslie Kopietz°  
Cynthia Steinke°  
Catherine and Paul Stemper  
Trudy and Edward Stevenson  
Katherine Steward°  
Dr. and Mrs. M. Thomas Stillman  
Prof. Hazel S. Stoeckeler°  
John and Marcia Stout°  
Dana and Stephen Strand  
Bill and Lee Strang  
Mary J. Streitz and David L. Shulman  
Michelle Streitz  
Mr. Robert Striker and Ms. Patrice Tetta°  
Tim and Beth Sullivan°  
Arlene and Tom Swain°  
Mike and Sandy Swirnoff  
Cindy Syme  
Anita and Robert Tabb  
Steven and Connie Tallen°  
Patty Tanji  
Robert and Ana Martinez-Tapp°  
Howard and Janet Tarkow  
Dr. Lucienne J. Taylor  
Kaimay and Joseph Terry, M.D.  
Dorothy Thalhuber°  
Irma Thies°  
C. Scott Thiss°  
Frank and Claire Thoen Levin  
Cindy Jacobson and Jim Thompson°  
Margaret and Michael Thompson  
Susan Thompson  
Mary Ida Thomson°  
Paula Thorn and Sid Gunter  
Mr. and Mrs. Curtis Thorpe°  
Adrienne and Paul Tietz  
Peter and Michele Timmons  
Louis and Frances Tobian°  
Orton and Karen Tofte  
Edward and Anne Towey  
Mr. and Mrs. Donald Traxler  
Blair and Linda Tremere  
Christine and Carl Tubbs  
Dale and Judy Tucker  
Robert D. and Marie Tufford  
Ann and Scott Ulring  
Mr. and Mrs. Harold S. Ulvestad, Jr.  
James and Ruth Van Meter°  
Johan Van Parys  
Philip and Kay VanderStoeps  
Kirstin Van Ornum

Marilyn L. Van Ornum and D. Bradford Johnson°  
Mr. and Mrs. James A. Vaughan, Jr.°  
Dean and Carol Veldman-Rudie  
Kenneth and Priscilla Velin°  
Karen Viskochil°  
Jeanne M. Voigt  
Clement and Ephie Volpe°  
James J. Wade°  
Dr. Kyla Wahlstrom and Dr. Richard Wahlstrom°  
Larry and Kristi Waite  
John Wald and Marianne Remedios°  
Dr. and Mrs. Fred Walker  
Mr. and Mrs. John E. Walkowiak, Jr.°  
Ursula Walsh and John Halloran  
Hallie E. Wannamaker  
Charles and Susan Ward°  
Chris and Bob Nemitz  
Marcus Waterbury  
Diane C. Watson  
Mr. and Mrs. Parke Weaver, Jr.  
Marilyn Weber  
Mr. and Mrs. Harry W. Webster°  
Margaret Weglinski  
Ms. Judith A. Weinig  
Ms. Miriam Weinstein and Ms. Amy Ollendorf  
Janet and Gerhard Weiss  
Gloria and Howard Weisskopf  
David K. Wells Jr.  
Jeffrey Wepplo and Lisa Deutsch  
Lisa Wersal and Louis Asher  
Mary and Mark Westra  
Elizabeth Wexler  
John and Annette Whaley  
Mrs. Claralouise Wheeler  
Nancy and Bill Whitaker  
Mr. and Mrs. A. K. Wickesberg  
Caroline Wilbrecht  
Christine M.H. Wildfang and K. Craig Wildfang  
Philip Willkie and Jon Doe  
Aimee Willoz  
Mr. Christopher Wilson  
Ardus B. Windhorst and \*John W. Windhorst, Sr.°  
Barbara Winthrop  
Kenneth L. and Nina L. Wise  
Ruth B. Witrak  
Roma Witzig  
Warren Woessner and Iris Freeman  
Sam Wolfson  
Michael and Judy Wood  
Anne and Oscar Woods

Julia S. Worker°  
Anne and Philip Worrell  
Mark Wright and Liz Walton  
Mr. and Mrs. Richard Wunderlich  
J. and D. Wuollet  
Mrs. Jean M. Wylie  
Eleanor and John Yackel  
Joy Yoshikawa and Mark Christensen  
Greg and Donna Young°  
Kathy and Howard Zack  
Will J. Zalaznik°  
Mr. and Mrs. Alphonse E. Zecca°  
James A. Zeese, M.D.°  
Mrs. Zarm Zeljik-Geisenhoff  
David E. and Janet Zens  
Linda Zick°  
Mr. and Mrs. Chester A. Zinn, Jr.°  
Mr. and Mrs. Lawrence S. Zipkin  
Dr. and Mrs. D. A. Zydwicz°

\*Deceased  
°Donor for ten consecutive years or more



**MATCHING GIFT COMPANIES**

**Individual donors are able to multiply their personal gifts to the Annual Fund and Membership Campaign by securing a matching gift from their employers, including these generous companies.**

3M Foundation  
ADC Telecommunications, Inc.  
Adobe Systems Incorporated  
Alliant Techsystems, Inc.  
Ameriprise Financial  
Archer Daniels Midland Foundation  
BAE Systems  
BCS Financial Corporation  
Bemis Company Foundation  
The Curtis L. Carlson Family Foundation  
Charthouse Learning  
Deluxe Corporation Foundation  
Dorsey & Whitney Foundation  
Dow Corning  
Fair, Isaac and Company Inc.  
Gap Foundation  
General Mills Foundation  
GMAC-Residential Funding Corporation  
Goodrich Corporation  
Guidant Corporation  
Hammel Green and Abrahamson, Inc.  
Harcourt General  
IBM Corporation  
ING Foundation  
Johnson & Johnson  
Larkin, Hoffman, Daly & Lindgren Ltd. Foundation  
The May Department Stores Foundation  
The McNeely Foundation  
Merrill Lynch & Co. Foundation, Inc.  
The NCR Foundation  
Pfizer, Incorporated  
Pioneer Hi-Bred International, Inc.  
Piper Jaffray  
PPG Industries Foundation  
The Prudential Insurance Company of America  
Red Wing Shoes Company Foundation  
Reuters America, Inc.  
Rockwell Automation Trust Matching Program  
Saint Paul Foundation  
SCIMED Life Systems, Inc.

SmithKline Beecham Foundation  
The Southways Foundation  
Sprint Foundation  
St. Paul Travelers Foundation  
Star Tribune Foundation  
TCF Bank  
Tennant Foundation  
Thomson West  
Thrivent Financial for Lutherans  
The Toro Company  
Travelers Express Company, Inc.  
U.S. Bancorp Foundation  
Archie D. and Bertha H. Walker Foundation  
Xcel Energy, Inc.

**MEMORIAL AND TRIBUTE CONTRIBUTIONS**

**The following donors have supported the museum with a memorial or tribute contribution or gift of art in recognition of a friend or family member.**

**In memory of Ahmad Aliabadi**  
Noah and Susan Eisenberg  
**In honor of Lauren Altman**  
Mark and Meg Karraker  
**In memory of Robert Andrews**  
Kitty and \*John Pillsbury  
**In memory of Georgia Bartlett**  
Mr. and Mrs. Derrick N. Alcock  
**In memory of Kathryn Berg**  
Mary E. Benson  
Bernard and Dorothy Casserly  
Bette M. Hammel  
Robert H. Harvey and Mary M. Harvey  
Ann M. Isaacson and Ted Rueff  
Susan and Tom Joyce  
Kathryn M. and Michael M. Otos  
**In honor of the 60th wedding anniversary of Marvin and Betty Borman**  
Kenneth Kahn and Susan Dicker Kahn  
**In memory of Edwin Braman**  
Braman and Nelson, Incorporated  
**In honor of Blythe Brenden**  
H.L. and Jo Ellen Saylor  
**In memory of M. Boyd Burton, Jr.**  
Carol Burton  
Dr. James Daniel  
Mimi and David Sanders  
**In honor of Jason Busch**  
Samuel and Patricia McCullough  
**In honor of Burt Cohen's birthday**  
Elayne and Marvin Wolfenson  
**In memory of Margaret Crist**  
Bruce and Jean Grussing

**In honor of Ella Crosby's 90th birthday**  
Roberta Mann-Benson  
Mr. and Mrs. Frederick Winston  
**In honor of Jennifer Curry**  
James Catherine Benjamin  
**In honor of Bruce B. Dayton**  
Marvin and Betty Borman  
Eric Dayton  
Ruth and John Huss  
Clinton and Mary Morrison  
**In honor of Ruth and Bruce Dayton**  
Alan and Mary Hogg  
**In memory of Ruth Dicker**  
Noah and Susan Eisenberg  
**In honor of Harry M. Drake**  
Bruce L. and Eleanor D. McLear  
**In honor of W. John Driscoll**  
Dr. Evan Maurer  
**In honor of Sylvia Druy's birthday**  
Shirley R. Ames  
Marion Apple  
Sidney and Lorraine Applebaum  
Nathan and Theresa Berman Family Philanthropic Fund  
Leah and Deborah Cook  
Sherman and Lois Devitt  
Stanley R. and Carol Dobrin  
Ms. Eileen Drew  
Barbara and \*David Eiger  
Rochelle Galinson  
Zelia K. Golbert and James A. Kanters  
Lois Goodman  
Ronnie and Larry Greenberg  
Mrs. Jules Gurstel  
Jane and Norman Gurstel  
Jeffrey S. and Myra M. Halpern  
Suzanne Fait Hanson  
Mr. and Mrs. Leo A. Hodroff  
Sylvia J. Howard  
Mr. and Mrs. Fred Isaacs  
Marjorie Graceman Kline  
Virginia F. Kremen  
Felice Kronfeld  
Harriet Kronick  
Marion Levine  
Richard S. Levitt  
Arnold and Renee Lifson  
B.J. Lundegard  
Mr. and Mrs. Howard B. Marks  
Mr. and Mrs. George E. Nadler  
Ramona S. Pepper

Sue and Martin Ring  
Abigail Rose and Michael Blum  
Doris Rose  
Susan and Elihu Rose Foundation  
Cheryl W. Rosen  
Edward and Ilse Rothman  
Roger D. and Jory A. Rubinger  
Jay D. Seeger  
Kevin and Jennifer Seeger  
Rabbi Max A. Shapiro  
Lorraine Shark  
Rose Jean Sharpe  
Margot Siegel  
Mrs. Joanne Smith  
Sharron Steinfeldt  
Shirley Supak  
Violet Werner  
Mrs. Sadie Wernick  
Helen and Leo Wolk  
Darlene J. Zuccaro  
**In memory of Jim Emison**  
Rusty and Burt Cohen  
Samuel and Patricia McCullough  
**In memory of Judy Figenskau**  
Julia Iverson  
**In memory of Timothy Fiske**  
Elie and Bob Reid  
**In memory of Scott Frizelle**  
Sandra Frizelle  
**In memory of Lael Grathwol**  
Rusty and Burt Cohen  
Laura DeBiaso  
Mary H. Hele  
Amy Jo Johnson  
Frances A. Nelson  
Kaylen C. Whitmore  
**In honor of Beverly and Bud Grossman**  
WEM Foundation  
**In memory of Philip B. Harris**  
James R. Campbell  
Anne Dorweiler  
Ross J. and Elizabeth M. Farmer  
Wanda Larson  
Longview Foundation  
Pat Markwardt  
The Minneapolis Foundation  
Clinton and Mary K. Morrison  
Elie and Bob Reid  
James A. and Ann H. Watson  
Wells Fargo Corporation  
Mr. and Mrs. Frederick Winston

**In honor of Ingrid Lenz Harrison**  
Judith and Arnold Brier  
**In honor of Al and Ingrid Lenz Harrison**  
Craig Bentdahl and Stephanie Simon  
**In memory of Millie Hartwick**  
Janet M. Kehne  
**In memory of Catherine Carey Hobart**  
Sara Homeyer  
**In honor of Agnes A. Hovda**  
Ron Hovda  
**In honor of Robert Jacobsen**  
Elie and Bob Reid  
**In honor of Arnie Kaplan's birthday**  
Noah and Susan Eisenberg  
**In honor of Sam Kaplan's birthday**  
Noah and Susan Eisenberg  
**In memory of Charlotte Karlen**  
Kalman W. Abrams  
Ruth R. Abry  
Mr. John E. Andrus III  
Karen Bachman and \*James Read  
Ethel D. Barr  
Minnie Bergman and Sandra Bergman  
Harold Berris  
Jeanne Blenkush Warren  
Emanuel Block  
Charlotte Bonniwell  
Paul and Helen Bowlin  
Ruth F. Brin  
Lynn Brofman and Chuck Levin  
Richard J. Campbell  
Darlene J. and Richard P. Carroll  
Rusty and Burt Cohen  
Custom Pools, Inc.  
Mrs. Julius E. Davis  
Julia W. Dayton  
Samuel C. Dixon  
Mr. and Mrs. Jack E. Duitch  
Hugh and Joyce Edmondson  
Barbara and \*David Eiger  
Edward and Elizabeth Eisenbrey  
Sheldon and Lois Epstein  
Patricia S. Etchart  
Mark Feeney and Claire Silvers  
Dolly J. Fiterman  
Gerald T. Flom  
Charles J. Frisch  
Bonnie and Phillip Gainsley  
Michael and Deborah Gold

Simon E. and Bettejane K. Goldman  
Susan Gordon  
Max B. Green  
Catherine Harper  
Alfred and Ingrid Lenz Harrison  
Bella J. Haskell  
Janet Horvath and Howard Kleyman  
Craig S. Hunegs and Daniela Roveda  
Richard and Dobie Hunegs  
Barbara Johnson  
Clifford and Thelma Johnson  
Kathryn C. Johnson and Scott R. Berry  
Abbie S. Kane  
Michael R. and Donna M. Kaplan  
Robert and Rita Kasper  
Marilyn Kelly  
Warren and Patty Kelly  
Marcia Koester  
Rholan Larson  
Abe and Frances Lastfogel Foundation  
Ruth E. Leiderman and Shelley B. Jacobs  
Mrs. Morton W. Levinson  
Diane and Michael Levy  
Mrs. Betty Jeanne Lillehei  
Harvey D. and Beverlee K. Lobsinger  
Siri and Bob Marshall  
Dr. Evan Maurer  
Samuel and Patricia McCullough  
Mr. and Mrs. Robert W. McDougall  
Sheila M. McGuire  
Marguerite S. McNally  
The Minnesota Orchestral Association  
Jim and Linda Mitchell  
Clinton and Mary K. Morrison  
Charlotte and Irving Nudell  
Jennifer Komar Olivarez and Enrique Olivarez, Jr.  
Dr. Martin and Joyce Orbuch  
Beatrice Orenstein  
Park Nicollet 7 South  
\*Mrs. George T. Pennock  
Dr. and Mrs. Richard Pfohl  
Elie and Bob Reid  
Jan and Arnie Ribnick  
Peg Roessler and Loren Sinning  
Erik Rogers and Nicole Henry  
Bruce A. and Leslie R. Rosenberg  
Ilene Rosenberg

Mrs. Sheldon B. Rubenstein  
Michael Salloway  
Mimi and David Sanders  
Earl S. and Barbara Flanagan Sanford Fund of The Minneapolis Foundation  
Mary M. Sanmonji  
Patty and Barney Saunders  
James A. Scarpetta  
Mark J. Schmidt, M.D. and Susan E. Reid  
Abe and Bailey Schwartz  
Shelley Segal  
Mrs. Marilyn Shapiro and Mr. Alan Shapiro  
Melissa and Sheldon Silberman  
Lee and Heather Simso  
Jeanne and Bradley Stitt  
Mrs. Lester Strouse  
Mrs. Marilyn Sussman  
John F. Swanson  
Charles Sweningsen  
Mary W. Vaughan Fund of The Minneapolis Foundation  
Dr. and Mrs. C. Edward Vaurio, Jr.  
Clement and Ephie Volpe  
Margaret Woellner and Richard Woellner  
Helen and Leo Wolk  
Dr. and Mrs. Felix Zwiebel  
**In honor of Richard Kovacevich**  
Rusty and Burt Cohen  
**In memory of Pauline Lambert**  
Merritt Nequette  
**In memory of Janey Leck**  
Mr. and Mrs. Robert R. Abrohams  
Constance P. Anding  
Doodie Backstrom  
Dr. and Mrs. Hyman Berman  
Marilyn Bockley  
Paul and Helen Bowlin  
Kenneth and Virginia Bureau  
Michael and Susan Burnett  
Marge Buss  
Virginia L. Campbell  
Joanne Carlson  
Walter and Elsa Carpenter Family Fund of The Minneapolis Foundation  
Darlene J. and Richard P. Carroll  
Docent and Garden Club  
Sylvia F. Druy  
Steve and Janet Everly  
Mrs. Dorothy Geis  
Mrs. Steve A. George  
E. Amy and Jeff Hill



**In memory of Janey Leck**  
(continued)  
Ann M. Isaacson and  
Ted Rueff  
Keith and Heidi Jacob  
Paul and Julie Kollitz  
Sally and Ernie Lehmann  
Dr. and Mrs. Thomas Leither  
Diane and Michael Levy  
Sara and David Lieberman  
Dr. John and Evodia Linner  
Mr. and Mrs. Thomas W.  
MacLeod  
Marilyn Marker  
Siri and Bob Marshall  
Vivian M. Mason  
Samuel and Patricia  
McCullough  
Pamela and Patrick McDavitt  
Dillon McGrath  
Sheila M. McGuire  
Margaret and Gerald Mullin  
James and Jacqueline Neilson  
Eleanor H. Nickles  
John and Shirley Nilsen  
Karl-Thomas Opem  
Stephen and Linnea Peterson  
Sally Boyd Polk  
Mr. and Mrs. George  
McKay Reid  
Mary and J. Peter Ritten  
Ms. Barbara Rubin and  
Mr. Barry Greenberg  
Mimi and David Sanders  
Sy and Edna Sanfilippo  
Gordon and Angela  
Sangster  
Evelyn Selim  
Geraldine Simer  
Dr. William and Judith  
Stephens  
Jane and Bill Venell  
Ruth and David Waterbury  
Mr. and Mrs. Geoffrey S.  
Workinger  
Dr. and Mrs. F. C. Wuest  
**In honor of Robert Lipnick**  
Anonymous  
**In honor of Cargill and Donna  
MacMillan, Jr.**  
Mrs. Liza MacMillan  
**In honor of Mary Maurer's  
retirement**  
Lori J. and Mark L. Balding  
Eileen D. Bendtsen  
Rollin and Anna Bergquist  
Dr. and Mrs. David P. Blake  
Kimberly J. Bowman  
Clara M. Bungert and  
Ann B. Korchik  
Imogene Christian  
Dr. William L. Christian

Rusty and Burt Cohen  
Richard Cohen and  
Carol Maurer  
Madeline C. Cushman  
Carol Donahue  
Lamonte J. and Janice M.  
Eastvold  
DiAnne Eno  
Greg and Therese Feldmeier  
JoAnne Feldmeier  
Joseph Feldmeier  
Natalie Feldmeier  
Sarah Feldmeier  
Mary Patricia Goodyear  
Mr. and Mrs. Raymond E.  
Haeg  
Jeannine and Richard  
Helmerichs  
Mary C. Jensen  
Kathryn C. Johnson and  
Scott R. Berry  
William C. and Annette J.  
Knutsen  
Blanche E. Maurer  
Samuel and Patricia  
McCullough  
Marguerite S. McNally  
Gregory T. McNamer  
V. R. McVean  
Sheila and John Morgan  
Janet Schmidt and  
Paul Morreim  
Sheila O'Connor  
Ms. Joan Grathwol Olson  
and Mr. Stephen Olson  
Linda Perlman  
Bernard and Marie Rimnac  
Erik Rogers and Nicole Henry  
Kathy Ryan  
Dennis M. and Judith A.  
Scanlon  
Pat Scanlon  
James A. Scarpetta  
Amber Serwat and Tony Ross  
Margaret Sines  
Maryellen Smith  
Greta Stryker  
Dorothy Swanson  
Ron K. and Dorothy  
Swedzinski  
Mark L. and Kathleen A.  
Thompson  
Ann and Scott Ulring  
Channadda Virasih  
Mary and Mark Westra  
**In honor of Bill McGuire**  
Rusty and Burt Cohen  
**In honor of Christopher  
Monkhouse's tenth  
anniversary**  
Pamela Brennan Collins  
**In memory of  
Frederick Monkhouse**

Susan and Edwin McCarthy  
Samuel and Patricia  
McCullough  
Ruth and David Waterbury  
**In memory of Michael Ness**  
Teena B. Fletcher  
Kathleen E. Johnson  
Ella Spanjers  
**In memory of John O'Keeffe**  
W.C. and M.C. Brock  
Kenneth and Virginia  
Bureau  
Michael and Susan Burnett  
Thomas L. Byfield  
Ann M. Isaacson and  
Ted Rueff  
Don and Helen Knutzen  
Ms. Geraldine Kozberg  
Ruth and Ben Leadholm  
Siri and Bob Marshall  
Samuel and Patricia  
McCullough  
Pamela and Patrick  
McDavitt  
Mary McGovern  
Sheila M. McGuire  
Eleanor H. Nickles  
James P. and Judith A.  
O'Donnell  
Mimi and David Sanders  
Dr. Maurine Venters and  
\*Dr. Homer D. Venters  
**In memory of Harold Peterson**  
David Adamany  
Barbara A. Aman and  
William R. Easton  
Mary and Lawrence Bass  
Roger H. Beck and  
Eric L. Anderson  
Barbara and Jonathan  
Beckwith  
Ruth and Bruce Dayton  
David J. Harris  
Wayne Henrikson  
Dennis Jon  
YoYo Jones  
Janice Lurie  
Carlotta Marshall  
John C. and Sheila P. Stoller  
John Tallman  
**In memory of  
Katherine C. Pillsbury**  
Mr. John E. Andrus III  
Frank L. and Beverly A.  
Anton  
M. W. Atwood  
Rusty and Burt Cohen  
Margaret P. Cost  
Ruth and Bruce Dayton  
Wendy and Douglas Dayton  
Deloitte & Touche L.L.P  
Gerald T. Flom

Alfred and Leona M. Gale  
General Mills Foundation  
Rosalie Heffelfinger Hall  
Fund of The Minneapolis  
Foundation  
Margaret S. Hart  
Mr. and Mrs. Hadlai A. Hull  
Mr. and Mrs. William R.  
Humphrey, Jr.  
Mr. and Mrs. F. G. Jewett III  
Mr. and Mrs. Richard G.  
Kelley  
Herman W. Laue and  
Shirley J. Laue  
James Lindsay  
David G. and Dorothy M.  
Meineke  
Meriden Engineering LLC  
Meristem, LLP  
Lucy and Robert Mitchell  
Clinton and Mary K.  
Morrison  
Mr. and Mrs. John E. Pearson  
Mary and Frank Plant  
David and Susan Plimpton  
The Pittsburgh Plate Glass  
Foundation  
Drs. Ong, Stroud, Pillsbury,  
Shanahan, Palumbo, Van  
Vleck, McDowell, & Kent  
Mr. and Mrs. Walter M.  
Ringer, Jr.  
Earl S. and Barbara  
Flanagan Sanford Fund  
of The Minneapolis  
Foundation  
Mrs. Erle B. Savage, Jr.  
Harriet and Edson Spencer  
Fund of The Minneapolis  
Foundation  
Mrs. George Steiner  
Robert D. Stuart, Jr.  
Mrs. Jerome T. Syverton  
Mary W. Vaughan Fund  
of The Minneapolis  
Foundation  
Ruth and David Waterbury  
James A. and Ann H. Watson  
Mr. and Mrs. Newell P. Weed  
WEM Foundation  
Mr. and Mrs. Frederick  
Winston  
**In memory of John Porusky**  
Les J. and Yvonne L. Hill  
**In memory of Martha Reed**  
Cargill and Donna  
MacMillan  
**In memory of  
Raymond Reister**  
Robert and Anne Aby  
Imogene and Kenneth J.  
Andersen  
James A. and Carol A.  
Anderson  
Jane Andreachi

Mr. and Mrs. Michael Bress  
Ruth F. Brin  
John and Mary Byron  
James and Dee Dorsey  
John T. Dorsey  
Dorsey & Whitney  
Foundation  
Hal and Joyce Field  
Nancy and Roy Greenland  
Donna Hull  
Clarice L. Johnson  
Gary M. Johnson and  
Joan G. Hershbell  
Roger and Peggy Johnson  
Duane E. Joseph  
Markle Karlen  
Muriel and Roland King  
Susan J. Klaseus  
Mrs. Barbara Krig  
Mr. and Mrs. John Levine  
Richard Coyle Lilly  
Foundation  
Mark D. and Mary K.  
Lindquist  
Lynda Lundstrom  
Robert W. Maynard  
Fund of The Minneapolis  
Foundation  
Marvin E. Mazie  
Samuel and Patricia  
McCullough  
Thomas M. Morin and  
John G. Skogmo  
Katherine Murphy  
Lisa Anne Neely  
Mrs. D. M. Nicoloff  
Mr. David Ranheim  
Elie and Bob Reid  
Reuter Construction, Inc.  
Jack E. and Marjorie L. Ross  
Earl S. and Barbara  
Flanagan Sanford Fund  
of The Minneapolis  
Foundation  
Bruce Jay Shnider and  
Patricia Strandness  
Joan T. Smith  
Jane and Frank Steck  
Mrs. John N. Taylor  
Mrs. Nedra M. Wicks and  
Mr. John Wicks  
**In honor of Martin M. Roessler**  
Catherine and Steven  
Webster  
**In memory of Burton G. Ross**  
Cynthia Rosenblatt Ross  
**In memory of  
Charlotte Saunders**  
Mrs. Barbara E. Arner  
Mrs. Stan D. Donnelly  
Mrs. Lawrence Platt  
**In honor of Denise Sheehy**  
Steve Kittay

**In memory of Florence Sigal**  
Martin and Lora Weinstein  
**In honor of Frank Sunberg**  
Rusty and Burt Cohen  
**In memory of Elaine Thorson**  
Marguerite S. McNally  
Greta Stryker  
**In honor of Bob Ulrich**  
Rusty and Burt Cohen  
**In memory of Frederick B. Wells**  
Ruth and Bruce Dayton  
Mrs. Edmund Phelps, Jr.  
Mrs. Erle B. Savage, Jr.  
**In honor of Steve Wexler's  
birthday**  
Noah and Susan Eisenberg

\*Deceased



**NAMED  
ENDOWMENT  
FUNDS FOR  
OPERATIONS AND  
PROGRAMS**

**The following individuals, families, and organizations are gratefully acknowledged for their named endowment funds that provide an ongoing source of income for museum programs. (Market values as of June 30, 2006.)**

**Distinguished  
Benefactors**

**Funds of \$5 million or more**

Ruth and Bruce Dayton Fund  
Ralph Whelan Trust Fund

**Leadership  
Benefactors**

**Funds of \$2 million to \$4,999,999**

The Patrick and Aimee Butler Fund for the Curatorship of Paintings  
Ruth Ann Dayton Rooms Fund  
The McKnight/Members’ Fund for Community Programs  
Putnam Dana McMillan Fund  
Lily S. Place Fund  
Target Foundation Special Exhibitions Fund

**Patron Benefactors**

**Funds of \$1 million to \$1,999,999**

Anonymous  
Mr. and Mrs. Charles H. Bell Fund for Decorative Arts  
The Bush Foundation Fund  
Friends Endowment Fund for Education  
Richard P. and Isobel R. Gale Fund for the Curator of Asian Art  
Mary Joann and James R. Jundt Fund  
Guilford A. Morse Fund  
Rhodes Robertson Fund  
John R. Van Derlip Trust Fund

**Major Benefactors**

**Funds of \$500,000 to \$999,999**

Marion and John Andrus III Prints and Drawings Fund  
Louis W. Hill, Jr. Memorial Fund  
Andrew W. Mellon Foundation Fund  
Star Tribune Fund  
Surdna Foundation Fund for the Curatorship of Prints and Drawings  
Donald Weesner Charitable Trust Fund

**Benefactors**

**Funds of \$100,000 to \$499,999**

Atherton and Winifred Bean Fund  
James Ford Bell Foundation, and the Bell Family Fund for Decorative Arts  
James Ford Bell Foundation Fund in honor of Charles H. Bell and Lucy W. Bell  
David Winton Bell Foundation  
The Bridgman Foundation  
Mr. and Mrs. Leonard G. Carpenter Fund  
Folwell W. Coan Fund  
Rusty and Burt Cohen Fund  
John Cowles Family Fund  
Mrs. Thomas M. Crosby, Sr. Fund  
Marion Cross Fund  
Anson Cutts Trust Fund  
Mike and Kathy Dougherty Fund  
Mary and Mark Fiterman Lecture Fund  
Merrill H. Gibbs Family Fund  
N. Bud and Beverly Grossman Fund  
William Randolph Hearst Foundation Fund  
The Herberger Foundation Endowment Fund  
Joan H. Herried Memorial Docent Lecture Fund  
Inga M. Holstad Fund  
Samuel H. Kress Foundation Fund  
Florence S. Lasher Fund  
Ella Sage Little Fund  
Lund Food Holdings, Inc., Lunds and Byerly’s Fund  
Marbrook Foundation Fund  
Ella S. Martin Fund  
McClurg Fund  
The McKnight Foundation Fund

The Medtronic Foundation Fund

Alida R. Messinger Fund  
Ellen J. Nelson Fund  
Frances Norbeck Fund  
The St. Paul Companies Fund  
The Fred R. Salisbury II Fund  
Sweatt Foundation Fund  
James R. Thorpe Fund  
Mr. and Mrs. Frederick B. Wells and Mrs. John Roller Fund  
Donald and Betty Winston Exhibition Fund

**Associate  
Benefactors**

**Funds of \$50,000 to \$99,999**

Margaret Boldt Anderson Fund  
Apache Foundation Fund  
Judy and Kenneth Dayton Fund for the Purcell-Cutts House  
Irene Donaldson Fund  
Frances V. Doneghy Fund  
Clarence G. Frame Fund  
Friends Endowment for Transportation  
G & K Services Fund  
Mr. and Mrs. Theodore S. Gary Fund  
Bill and Penny George Fund for Education and Community Programs  
Mrs. Merrill H. Gibbs Fund in memory of Merrill H. Gibbs  
Mr. and Mrs. Bernard M. Granum Fund for Conservation  
Helen Winton Jones Fund  
The James and Faeth McGowan Fund  
Rudolph Miller Fund  
Margaret E. Morris Fund  
Clinton Morrison and Mary K. Morrison Fund  
Augustus L. Searle Fund  
Ruth Mackoff Shapiro Docent Education Fund  
Mary R. Slater Fund in memory of Wallace and Lillian Reinhardt  
Anne Morrison Snyder Memorial Fund  
Roman and Alice Verotsko Fund  
Weesner Charitable Trust Fund  
Elsie and Mauritz Westmark Fund

**Patrons**

**Funds of \$10,000 to \$49,999**

Anonymous  
Agnes Lynch Anderson and Roger Lewis Anderson Lecture Fund  
Frances V. Anderson Fund  
Bemis Company Foundation Fund  
Mildred Bird Fund  
Elsie Boosalis Fund  
Robert and Lois Bowen Fund  
Carol and Conley Brooks, Jr. Fund  
Mr. and Mrs. Conley Brooks, Sr. Fund  
Mary Ann Butterfield Textile Fund  
Mrs. Benton J. Case, Sr. Fund in memory of Benton Janney Case  
Thirza Cleveland Fund  
Community Endowment Fund for Jewish Arts and Culture  
Cornelia Coultrap Fund  
Anne S. Dayton Fund  
Esther Donovan Fund  
Dorathea Drotning Fund  
Sylvia Druy Endowment for Museum Guide Education  
Mr. and Mrs. Gerald A. Erickson Fund  
Richard and Beverly Fink Fund  
Barbara Forster Fund  
Gertrude Gieseke Fund  
The Irene V. Grayston Fund  
Lois Hall Fund  
Henry Hanson Fund  
Josephine O. Hanson Fund  
Charles M. Harrington Trust Fund  
Denie Harris Memorial Fund  
Philip B. Harris Fund  
Margaret Washburn Hunt Fund  
Mr. and Mrs. Andrew M. Hunter III Fund  
Grace M. Jefferson Fund  
Mrs. Blair Jenness Fund in memory of Mr. and Mrs. James B. Lindsay  
Josephine J. Jensen Fund  
Alice Johnson Fund  
Josie Johnson Fund  
Frances E. Jordan Fund  
Charlotte Karlen Lecture Fund  
Dorothy Kincaid Fund  
Ruth Kincaid Fund  
Elizabeth Washburn King Fund  
D. Kenneth and Patricia A. Lindgren Fund  
Emily C. Lineburg Fund  
Martin Foundation Fund

Minnesota Natural Foundation Fund

Margaret M. Mull Fund  
Endowment Fund for Museum Guide Education  
Jane and Thomas Nelson Fund  
Mr. and Mrs. James S. Nordlie Fund  
Mr. and Mrs. Richardson Okie Fund  
Eugene and Virginia Palmer Fund  
Louise R. Phelps Fund  
Piper Family Fund of The Minneapolis Foundation  
John and Katharine Pillsbury Fund  
Russell A. Plimpton Fund  
Emily L. Pyke Fund  
Sara Rutz Fund  
Sandy Family Fund  
Joan and Arthur Schulze Fund  
Margaret Schweizer Fund  
The Shared Fund  
Charles Silverson Fund  
Dr. Werner and Elizabeth Simon Music Fund  
Skoglund Trust Endowment  
Harold and Mickey Smith Endowment Fund  
Loring M. Staples, Jr. Fund  
Ruth Bovey Stevens Fund  
Alan and Evelyn Struthers Fund  
Barbara Benton Wescoe Fund  
Helen and J. Kimball Whitney Fund  
Ruth E. Wilson Fund  
Charles J. Winton, Jr. Fund  
Mrs. Frederick Winston Fund  
Helen and Leo Wolk Fund

**NAMED  
ENDOWMENT  
FUNDS FOR WORKS  
OF ART**

**The following individuals are gratefully acknowledged for their generous gifts in honor of Bruce Dayton, whose vision, leadership and contributions to the Institute's collection are unparalleled. These gifts have established the Friends of Bruce Dayton Endowment Fund that will bring great treasures to the museum for all time.**

**The Friends of  
Bruce Dayton Art  
Acquisition Fund**

Michael Boardman and Kate Tabner  
Marvin and Betty Borman  
Burt and Rusty Cohen  
John and Lee Driscoll  
Jane Emison  
Beverly Grossman  
Alfred and Ingrid Lenz Harrison  
John and Ruth Huss  
David and Randy Lebedoff  
Barbara Longfellow  
Nivin and Duncan MacMillan  
Ted and Roberta Mann Foundation  
Clinton and Mary Morrison  
Brian and Julia Palmer  
Gene and Gail Sit

**The following individuals and families are gratefully acknowledged for their named endowment funds that provide ongoing support for the acquisition of art and continual growth of the museum's permanent collection. (Market values as of June 30, 2006.)**

**Distinguished  
Benefactors**

**Funds of \$5 million or more**

Ethel Morrison Van Derlip Trust Fund  
John R. Van Derlip Trust Fund

**Leadership  
Benefactors**

**Funds of \$2 million to \$4,999,999**

Walter C. and Mary C. Briggs Trust Fund  
William Hood Dunwoody Fund  
Putnam Dana McMillan Fund

**Patron Benefactors**

**Funds of \$1 million to \$1,999,999**

Driscoll Art Accessions Endowment Fund  
Christina N. and Swan J. Turnblad Memorial Fund

**Major Benefactors**

**Funds of \$500,000 to \$999,999**

Richard Lewis Hillstrom Fund  
William and Harriet Ludwick Endowment for Western Art  
Ted and Roberta Mann Foundation Endowment Fund  
Katherine Kittredge McMillan Memorial Fund  
Mary Agnes and Alvin E. McQuinn Endowment for Decorative Arts  
Sheila C. and John L. Morgan Endowment for Art Acquisition  
Mary Ingebrand-Pohlad Endowment for Twentieth Century Paintings  
Suzanne S. Roberts Endowment for Asian Art  
Walter H. and Valborg P. Ude Memorial Fund

**Benefactors**

**Funds of \$100,000 to \$499,999**

Tess E. Armstrong Fund  
James Ford Bell Foundation Endowment for Art Acquisition  
Julia B. Bigelow Fund  
Walter Bollinger Fund  
David Draper Dayton Fund  
William C. Dietrich Endowment for 19th Century Paintings  
Dolly J. Fiterman Fund  
Peter and Patricia Frechette Endowment for Art Acquisition  
John and Ruth Huss Fund for Decorative Arts  
Paul C. Johnson, Jr. Fund  
Helen Jones Fund for Asian Art  
Winton Jones Endowment Fund for Prints and Drawings  
Eloise and Elliot Kaplan Endowment for Judaica  
Allen and Kathy Lenzmeier Endowment for Art Acquisition  
Barbara S. Longfellow Fund for Works on Paper  
Siri and Bob Marshall Fund for American Paintings  
Martin and Brown Endowment Fund  
Walter McCarthy and Clara Ueland Endowment for Photographs  
The Douglas and Mary Olson Frame Acquisition Fund  
Simmons Family Endowment for Textiles  
David and Ruth Waterbury Endowment for Contemporary Craft  
Mary Ruth Weisel Endowment for Africa, Oceania, and the Americas  
Robert C. Winton Fund



Associate Benefactors

Funds of \$50,000 to \$99,999

Mary and Robyn Campbell Fund for Art Books

Joan and Gary Capen Endowment for Art Acquisition

C. Curtis Dunnavan Endowment for Asian Art

Ben and Becky Field Endowment for Art Acquisition

Mr. and Mrs. Bernard M. Granum Fund

Hognander Family Endowment for Scandinavian Art

Anne and Hadlai Hull Endowment for Art Acquisition

Shirley Mahowald and Henry Kinsell Endowment for Art Acqusition

Larey E. Lindberg and Larey Swanson Endowment for Art Acquisition

Marguerite S. McNally Endowment for Art Acquisition

Fred S. Salisbury II Fund

The Shared Fund

Robert J. Ulrich Fund

Patrons

Funds of \$10,000 to \$49,999

Anonymous

Ruth B. Anderson Memorial Endowment for Asian Art

Ford and Amy Bell Endowment Fund for Decorative Arts

Michael Bennes Endowment for Art Acquisitions

Carol and Ray Bergeson Endowment for Art Acquisition

Dandelion Endowment for Textiles

James and Maureen Duffey Endowment for Prints and Drawings

Richard and Beverly Fink Endowment for Art Acquisition

Norman Gabrick Endowment for African Art

Kelly and Geoffrey Gage Endowment for Art Acquisition

Paul and Gisela Konopka Endowment Fund

Samuel and Patricia McCullough Endowment for American Furniture and Folk Art

James and Jo Ann Nordlie Endowment for Art Acquisitions

Linda and Lawrence Perlman Photography Endowment

Michael and Gloria Plautz Endowment for Art Acquisition

Louisa Richardson Endowment for Art Acquisition

Earl and Barbara Sanford Fund for American Art

Leon and Anna Schaar Fund

Deborah Davenport and Stewart Stender Endowment for American Folk Art

FRIENDS ENDOWMENT FUND FOR EDUCATION

Mr. and Mrs. Laress V. Ackman Fund

Mr. and Mrs. Robert W. Amis Fund

Brian and Mary Sue Anderson Fund

Jo and Gordon Bailey Fund

The Bergerson Family Fund

Jane Robertson Blanch Fund

Sheila and Michael Bonsignore Fund

Carolyn Foundation Fund

Margaret W. Case Fund

Thomas and Phyllis Colwell Fund

Mrs. Thomas M. Crosby, Sr. Fund

The Docents of the Minneapolis Institute of Arts Fund

Mr. and Mrs. Hadlai A. Hull Fund

Dean and Joan Hutton Fund

Patricia and Benjamin S. Jaffray Fund

Jacqueline Nolte Jones Fund

Don and Helen Knutzen Fund

Mary Maurer Fund

Samuel and Patricia McCullough Fund

McVay Foundation Fund

Merrill Lynch & Company Foundation, Inc. Fund

Sheila and John Morgan Fund

Virginia Myers, Martha Head, Mary McVay Fund

Jane and Thomas Nelson Fund

Mrs. Patricia J. Nelson Fund

Mr. and Mrs. Douglas J. Olson Fund

Daniel E. and Marjorie J. Peterson Fund

Mrs. Ruth Bovey Stevens Fund

Glenda and Richard Struthers Fund

Ellen Tracy Inc. Fund

Mary Ann and Ron Weber Fund

Charlotte Griffin Weld and Eleanor Weld Reid Fund

FRIENDS OF THE INSTITUTE

Gifts and sponsors for special projects \$5,000 and above

Anonymous

Best Buy

Briggs and Morgan, P.A.

Cheerios

Geren Fauth

Lakewood Cemetery

Kathy and Allen Lenzmeier

Lowry Hill Private Wealth Management

Marsh Private Client Services

Target

Tiffany & Co.

NEW CENTURY SOCIETY

The following individuals have committed support for the Minneapolis Institute of Arts through bequests, life-income arrangements, and other estate plans. Legacy gifts help build for the future by providing lasting support for the Institute's programs and activities.

Anonymous (6)

Dennis Albrecht

Barbara A. Aman and William R. Easton

E. Viktoria Anderson

\*Mrs. Frances V. Anderson

\*Ruth B. Anderson

Ruth M. Anderson

Rolf L. Andreassen M.D. and Norma Neumann

Karen L. Andrew

Mr. John E. Andrus III and \*Mrs. John E. Andrus III

\*Mrs. Tess E. Armstrong

R. Patrick Atherton

\*Michael H. and Rosalyn Amdur Baker

\*Mr. Stephen R. Baker

\*Kenneth Barry

Mrs. W.R. Royce Beamish

\*Winifred and \*Atherton Bean

\*Mr. and \*Mrs. Charles H. Bell

Joseph Bellows

\*Kathleen B. Belzer

Marilyn C. Benson

\*Grace Virginia Benz

Ray and Carol Bergeson

\*Miss Mildred V. Bird

E. Michael and Ann E. Birt

Robert and Varley Bodsgard

Robert E. Boldt

\*Mrs. Walter R. Bollinger

Kimberly J. Bowman

Mary S. Bowman

\*Mary C. Briggs and \*Walter C. Briggs

\*Mary Stewart Brink

\*Ethelyn J. Bros

Sandra M. and David M. Brown

Mary Burich

\*Mary Livingston Griggs and Mary Griggs Burke Foundation

Carol and \*M. Boyd Burton

Barbara J. and Michael D. Byrne

Mary and \*Robyn Campbell

Joan and Gary Capen

\*Arleen Carlson

Darlene J. and Richard P. Carroll

Helen L. Cashman

Kristine A. Cecil

Judith Christensen

\*Ms. Lucille Hvass Clark

Dr. John I. Coe and \*Mrs. John I. Coe

Judith S. and Richard F. Corson

Ms. Margaret Coudron

Kathleen Coy

\*Marion Cross

David and Amber Dapkus

Mrs. Julius E. Davis

Ruth and Bruce Dayton

Mary H. Dayton

Janna P. De Lue

Mr. Harrison C. Deal

\*Margaret Deal

Virginia E. Dehn

\*William C. Dietrich

\*Rosamond Dols

\*Frances V. Doneghy

Sue Doty and \*George Doty

Judy Driscoll

\*Dorathea B. Drotning

Dr. James J. Duffey and Maureen O. Sullivan Duffey

C. Curtis Dunnavan

Dr. Robert and Mary Beth Eagan

Jane and \*Jim Emison

E. Duane and Marlene Engstrom

Sally Jane Enstrom

Carolyn Evans

Sheryl and David Evelo

John and Ester Fesler

Dolly J. Fiterman

Mary Goff Fiterman

\*Mrs. Dorothy Fobes

\*Clarence G. Frame

C. Andrew Fuller and Priscilla Paine Fuller

\*Mr. and Mrs. Don Gabbert

Norman M. Gabrick

Ms. Jennifer R. Gage

Edith and Norman Garmezy

David Gerdes

Cora Ginsberg

Gary L. Gliem

\*Maxine and \*Kalman Goldenberg

\*Irene V. Grayston

Gregory Grinley and Raymond Terrill

Beverly N. Grossman

\*Alpha M. Gustafson

Rose O. Gustafson

\*Musa Guston

Lois Hall

\*Lenore Hannon

\*Mr. and Mrs. Philip B. Harris

Dr. Evelyn Hatcher

Elaine and Roger Haydock

Charles P. Helsell

\*Edward Lees Henderson

Mr. and Mrs. Kenneth A. Hengler

\*Miss Amy Herman

Hazel Hermanson

\*Gareth Heibert and \*Janet Hiebert

Reverend Richard L. Hillstrom

Leonard and Mary Lou Hoeft

Peggy Ann Hoeft

\*Inga M. Holstad

Shelley K. Holzemer

Charles J. Hudgins

Mr. and Mrs. Hadlai A. Hull

Dr. Kjeld O. Husebye and Mrs. Karen Husebye

Frank J. Indihar, M.D.

Suzanne and Thomas Inman

\*Ms. Mary Young Janes

Grace M. Jefferson

Mrs. Blair Jenness

Betty and \*Frank Jewett, Jr.

\*Dr. Frank E. Johnson

Kathryn C. Johnson and Scott R. Berry

\*Mary Elizabeth (Mimi) Johnson

\*Paul C. Johnson, Jr.

Victoria K. and \*Gerald W. Johnson

Charmaine H. Jones

Sara Jones

\*Charlotte Karlen

Marilyn Kelly Cramolini

\*Ruth Kincaid and \*Dorothy Kincaid

Helen M. King

\*Mr. Kemper E. Kirkpatrick

\*John Harold Kittleson

\*Dr. I. M. Kolthoff

\*Dr. Gisela Konopka

Liz and James Krezowski

Felice Kronfeld and \*Mervin Kronfeld

James and Martha Abbott Ladner

\*Mrs. Floyd E. Lasher

James C. Lau

Jim Lawser and Duane Bandel

Mr. and Mrs. Roth S. Leddick

Ward B. and Susan E. Lewis

Patricia and D. Kenneth Lindgren

\*Ms. Emily C. Lineburg

Barbara S. Longfellow

Patricia Lund

David and Mary Maas

\*Wayne and Rosalee MacFarlane

Shirley Mahowald and \*Henry Kinsell

\*Gladys H. Margolis

Siri and Bob Marshall

\*Felix A. Martucci

\*Mr. Samuel H. Maslon and \*Mrs. Luella R. Maslon

Robert W. Maynard

\*Mrs. James McGowan

Mary E. McKinsey

Dr. Duncan McNab

Marguerite S. McNally

Don McNeil and Emily Galusha

Jeffrey C. Meehan

\*Jeanne E. Michener

\*Rudolph W. Miller

Patricia M. Mitchell

Dr. Alfred Moir

Gunilla Adner Montgomery

\*Margaret Morris

Clinton and Mary K. Morrison

Arnold W. Morse

J. Dudley Moylan

\*Margaret M. Mull

Sally A. Mullen

Alan and Dena Naylor

Judy Neiswander and William Gleason

Rodney Nelson

\*Mrs. Frances M. Norbeck

\*Mrs. Stanley Norris

\*Marjorie I. Nutter

\*Mr. and \*Mrs. Richardson B. Okie

Charlotte and Raymond Olson

Douglas and Mary Olson

Mr. and \*Mrs. Murray Olyphant, Jr.

Karl-Thomas Opem

\*Hendrik and Marri Oskam

Constance S. Otis

\*Mr. Mickey Pallas

Martha and Roger R. Palmer

Terry and Mary Patton

Mrs. James R. Paul

Donna L. Pauley

Mr. and Mrs. Charles Pitschka

Michael and Gloria Plautz

Karen and Richard Ploetz

Heidi and Richard Downing Poey

Forbes W. Polliard

\*Alice B. Pommer

Harriet and Walter Pratt

Ms. Eleanor Ralston

Ronald D. Reavis

Darwin and Geri Reedy

Dorothy L. Renn

\*Mrs. Georgiana Slade Reny



Louisa H. Richardson  
\*Dr. and \*Mrs. Dean K. Rizer  
Clifford M. Roberts, Jr. and  
\*Suzanne S. Roberts  
David L. Rodum  
\*Adele H. Roller  
John and Julie Roth  
Barbara Rubin-Greenberg  
Burton and Berneen Rudolph  
\*Sara Rutz  
\*Mr. Fred R. Salisbury  
Jim and Cheryl Samples  
Earl S. and Barbara Flanagan  
Sanford  
Diane K. Sannes  
\*Dr. Frances E. Schaar  
Kathryn E. Schenk and  
Allan W. Mahnke  
Allan and Deborah Schneider  
\*Margaret J. Schweizer  
Dale and Kay Schwie  
Gail and Henry See  
Regis and Ruth Seidenstricker  
Ruth M. Shipley  
\*Mr. and \*Mrs. Charles T.  
Silverson  
Dr. Richard L. Simmons  
\*Elizabeth Strawn Simon  
Dr. Werner Simon and Madeline  
Simon  
Anne Larsen Simonson  
\*Mrs. Lee H. Slater  
\*Kenneth R. and Lillian Smith  
Leonard and Frances Spira  
Richard and Carol Stahl  
\*Loring M. Staples, Jr.  
Elsie Stephens  
Mrs. Sibley F. Stewart  
\*Alan and Evelyn T. Struthers  
\*Dr. Betty J. Sullivan  
Michael L. Summerfield  
\*Edward O. Swanson  
\*Charles B. and \*Margaret L.  
Sweatt  
Jerald E. Swenson  
Mr. and Mrs. John D. Telfer  
Kaimay and  
Joseph Terry, M.D.  
\*Mr. and Mrs. Robert A. Thacher  
Dr. Charles Thiesenhusen  
Mrs. Inga Thompson  
\*James Tigerman  
\*Mrs. Clarence O. Tormoen  
Ugyen Tshering and  
Patrizia Franceschinis  
\*Thyrza Tyrrell  
Mr. and Mrs. Joseph Urista  
\*Mr. and Mrs. Vernon S. Vendel  
Roman and Alice Verostko  
\*Ceil T. Victor  
Jack and Connie Wallinga

\*Marianne Baird Wallman and  
\*William Wallman  
\*Joseph E. Walton  
\*Lucille B. Webster  
Dr. Gabriel P. and Yvonne  
Weisberg  
Mary Ruth Weisel  
\*Mauritz Westmark and  
\*Elsie B. Westmark  
Steven and Mindy Wexler  
\*John R. and Renata R. Winsor  
Margie and Woody Woodhouse  
Caroline A. V. Woods  
Margaret B. Woodworth and  
\*Robert C. Woodworth  
Penny Lorraine Wuerth  
Marcia Henry Yanz  
\*Steven and \*Rita Zellmer

**GIFTS BY BEQUEST**  
**The following individuals**  
**are acknowledged and**  
**remembered for their**  
**estate gifts.**

\*Mr. Michael H. Baker  
\*Charlotte Karlen  
\*Mr. Henry Kinsell  
\*Janey Leck  
\*James Tigerman

**HONOR ROLL**  
**The following donors have**  
**provided support that has**  
**built and sustained the**  
**museum throughout its**  
**history up to the present.**  
**This list includes donors**  
**to both the Minneapolis**  
**Society of Fine Arts**  
**and the Minneapolis**  
**Institute of Arts (through**  
**June 30, 2006) whose**  
**generosity forms the base**  
**of the museum's financial**  
**stability.**

**Master Builders**

**Cumulative support of**  
**\$5,000,000 or more**

\*Winifred and \*Atherton Bean  
Citizens of Hennepin County-  
Park Museum Fund  
Ruth and Bruce Dayton  
Elizabeth and W. John Driscoll  
Friends of the Institute  
General Mills Foundation  
N. Bud and Beverly Grossman  
Alfred and Ingrid Lenz Harrison  
The McKnight Foundation  
Target, with support from the  
Target Foundation  
U.S. Bancorp Foundation  
Bob Ulrich and Jill Dahlin  
Ralph Whelan Trust

**Builders**

**Cumulative support**  
**of \$1,000,000 to**  
**\$4,999,999**

Anonymous (2)  
3M and the 3M Foundation  
Ameriprise Financial  
Sydney Peppard Anderson  
Mr. and \*Mrs. John E.  
Andrus III  
Athwin Fund of The  
Minneapolis Foundation  
\*Mr. Charles H. Bell and  
\*Mrs. Charles H. Bell  
The James Ford Bell Foundation  
\*Theodore W. Bennett Charitable  
Trust  
Best Buy Children’s Foundation  
\*Mr. and \*Mrs. James H. Binger  
\*Mary C. Briggs and  
\*Walter C. Briggs  
Mary Livingston Griggs  
and Mary Griggs Burke  
Foundation  
The Bush Foundation

Patrick and Aimee Butler  
Family Foundation  
Cargill  
Curtis L. Carlson Family  
Foundation  
\*John Cowles and  
\*Elizabeth Bates Cowles  
Curtis Galleries, Inc.  
Elisabeth Jackley Dayton  
\*Kenneth and Judy Dayton  
Deluxe Corporation  
Foundation  
Harry M. Drake  
The Driscoll Foundation  
C. Curtis Dunnavan  
Jay F. Ecklund  
Jane and \*Jim Emison  
Mr. and Mrs. J. Hap Fauth  
Dolly J. Fiterman  
Shirley and \*Miles Fiterman  
and the Shirley and Miles  
Fiterman Charitable  
Foundation

Ford Motor Company Fund  
Pierson M. and Florence B.  
Grieve Family Fund of  
The St. Paul Foundation  
Carolyn and Franklin Groves  
The Herberger Foundation

\*Mr. and \*Mrs. Louis W. Hill, Jr.  
Leo and Doris Hodroff  
Honeywell Foundation  
Mr. and Mrs. Hadlai Hull  
Ruth and John Huss  
Mary Ingebrand-Pohlad  
Mr. and Mrs. Carl W. Jones  
James R. and M. Joann Jundt  
The Kresge Foundation  
Myron and Anita Kunin

\*Dorothy Millett Lindeke  
Dr. and Mrs. William E.  
Ludwick  
Whitney and Elizabeth  
MacMillan  
MAHADH Fund of HRK  
Foundation  
Nivin and Duncan MacMillan  
Cargill and Donna MacMillan  
Ted and Roberta Mann  
Foundation

\*Samuel and \*Luella Maslon  
Mary Agnes and Al McQuinn  
The Medtronic Foundation  
Minnesota State Arts Board  
Sheila and John Morgan  
National Endowment  
for the Arts  
National Endowment  
for the Humanities  
Douglas and Mary Olson  
Pohlad Family Foundation  
Darwin and Geri Reedy  
Regis Foundation

Anne Pierce Rogers  
St. Paul Travelers Foundation  
Dr. Richard L. Simmons  
Eugene and Gail Sit  
Sit Investment Associates  
The Southways Foundation  
Star Tribune Foundation  
\*Mr. and Mrs. George Steiner  
Surdna Foundation  
\*Mr. and \*Mrs. Charles B.  
Sweatt  
T. B. Walker Foundation  
Mary Ruth Weisel  
Wells Family Foundation Trust  
Wells Fargo Foundation  
Minnesota  
Western and F.A. Bean  
Foundations  
Carl A. Weyerhaeuser  
Charitable Trust  
Angus and Margaret Wurtele  
Xcel Energy, Inc.

**Master Benefactors**

**Cumulative support of**  
**\$500,000 to \$999,999**

Anonymous  
\*Patrick and \*Aimee Mott Butler  
Martha and Bruce Atwater  
Blandin Foundation  
Burlington Northern Santa Fe  
Foundation  
Aimee Mott Butler Charitable  
Trust  
Sandra and Peter Butler  
Chadwick Foundation  
Consulate General of Sweden  
The Croixwood Trust  
\*Anson B. Cutts, Jr.  
Douglas and Wendy Dayton  
\*Mr. and \*Mrs. Donald C.  
Dayton  
Mary Lee and \*Wallace C.  
Dayton  
Dorsey & Whitney Foundation  
Faegre & Benson Foundation  
Freeman Foundation  
\*Don and Louise Gabbert  
\*Mr. and \*Mrs. Richard P. Gale  
B. C. Gamble and P. W. Skogmo  
Fund of The Minneapolis  
Foundation  
Penny and Bill George  
The Groves Foundation  
Mr. and Mrs. Louis J. Hill, Jr.  
\*Mr. and \*Mrs. A.D. Hulings  
Institute of Museum and  
Library Services  
Patricia and Benjamin Jaffray  
JDR 3rd Fund  
Jerome Foundation

\*Winton Jones  
Elliot and Eloise Kaplan Family  
Fund of The Minneapolis  
Foundation  
Constance and Daniel Kunin  
Sara and David Lieberman  
Barbara S. Longfellow  
Donald and Diana Lee Lucker  
Siri and Bob Marshall  
The Maslon Foundation  
Samuel D. and Patricia N.  
McCullough  
Marguerite S. McNally  
The Sumner T. McKnight  
Foundation  
\*Mr. and \*Mrs. Charles B.  
Meech  
The Andrew W. Mellon  
Foundation  
MIA Decorative Arts Council  
The Minneapolis Foundation  
Patricia M. Mitchell  
Clinton and Mary K. Morrison  
\*Mr. and \*Mrs. John M. Musser  
Robert W. and Carolyn W.  
Nelson  
Northwest Area Foundation  
Linda Peterson Perlman and  
Lawrence Perlman  
The Jay and Rose Phillips  
Family Foundation  
Qwest Foundation  
Mr. and Mrs. Gerald A.  
Rauenhorst  
RBC Dain Rauscher  
Foundation  
\*Georgiana Slade Reny  
Anne Larsen Simonson  
Clifford M. Roberts, Jr. and  
\*Suzanne S. Roberts  
Jack A. and Aviva Robinson  
\*Mr. and \*Mrs. John R.  
Van Derlip  
The Wallace Foundation  
\*Fred and Ellen Wells  
Wheelock Whitney III  
Margie and Woody Woodhouse  
Mr. and \*Mrs. James T. Wyman

**Distinguished**  
**Benefactors**

**Cumulative support of**  
**\$300,000 to \$499,999**

Anonymous  
Kim and Gloria Anderson  
Ankeny Family Fund of The  
Minneapolis Foundation  
Bemis Company Foundation  
Carlson Companies,  
Incorporated  
Carolyn Foundation  
\*Mr. and \*Mrs. Leonard  
Carpenter

Mrs. Olive C. Case  
Helen L. Cashman  
Rusty and Burt Cohen  
Mrs. Thomas M. Crosby, Sr.  
\*David M. Daniels  
Judy Driscoll  
The Ford Foundation  
Grace B. Wells Fund of The  
Minneapolis Foundation  
\*Musa Guston  
\*George and \*Margret Halpin  
Margaret W. Harmon  
Charitable Trust  
Mr. Kevin Ingram Hart and  
Mrs. Polly Dix Hart  
The Henry Luce Foundation  
Douglas and Victoria Holmen  
ING Foundation  
International Multifoods  
Charitable Foundation  
James and Maxine Johnson  
Janet N. Jones  
Mr. and Mrs. Roger Kennedy  
Dr. and Mrs. John E. Larkin  
The Levitt Foundation  
R.C. Lilly Foundation  
\*Wayne and \*Rosalee  
MacFarlane  
Marbrook Foundation  
Jennifer L. Martin  
Carolyn Groves  
\*Mrs. John M. Musser  
Alan and Dena Naylor  
Katherine D. and Stuart A.  
Nielsen  
\*Mrs. Frances M. Norbeck  
Northern Pump Company  
Northwest Airlines, Inc.  
Northwestern Foundation  
Piper Jaffray  
Elizabeth C. Quinlan  
Foundation  
George Rickey  
Robins, Kaplan, Miller & Ciresi  
L.L.P.  
\*Kenneth R. and Lillian Smith  
Mickey and Harold Smith  
Laurie and Michael Snow  
SUPERVALU Foundation on  
behalf of SUPERVALU INC.  
and Cub Foods  
\*Charles B. and \*Margaret L.  
Sweatt  
TCF Bank  
Thrivent Financial for  
Lutherans  
Martin and Lora Weinstein



Benefactors

Cumulative support of \$150,000 to \$299,999

Anonymous (3)  
Alliss Educational Foundation  
AmeriPride Services, Inc.  
Ashland Inc.  
Asian Arts Council  
Fred C. and Katherine B. Andersen Foundation  
\*Dr. Roger L. Anderson  
\*Mrs. Frances V. Anderson  
\*Mrs. Tess E. Armstrong  
Calvert Barksdale  
Ford and Amy Bell  
\*Mr. and \*Mrs. Judson Bemis, Sr.  
Betty and Marvin Borman  
Ronald Bourgeault  
Dr. David and \*Helen Bradford  
\*Ethelyn J. Bros  
Carmen and Jim Campbell  
Joanne and Benton Case, Jr.  
Reliant Energy Minnegasco  
Mr. Lynn L. Charlson  
Squam Lake Foundation—Charles A. Cleveland  
\*Mrs. Folwell W. Coan  
Julia Thorpe Cote Trust  
Marguerite and Russell Cowles  
\*Marion Cross  
Anne Dayton  
Mr. Harrison C. Deal  
\*Margaret Deal  
Mr. and Mrs. George H. Dixon  
Donaldson Company, Inc.  
\*Virginia Doneghy  
Mrs. Eunice L. Dwan  
Mr. and Mrs. Gerald A. Erickson  
Ernst & Young L.L.P.  
F. R. Bigelow Foundation  
Beverly and Richard Fink  
Mary Goff Fiterman  
Mr. and Mrs. Peter Frechette  
Gabberts Furniture & Design Studio  
Edith and Norman Garmezy  
GE Capital Fleet Services  
Kate V. Gibbs  
\*Mrs. Gordon W. Gieseke  
Rehael Fund—Roger L. Hale and Eleanor L. Hall Fund of The Minneapolis Foundation  
\*Mr. and \*Mrs. Stanley Hawks  
William Randolph Hearst Foundation  
Reverend Richard L. Hillstrom  
Leonard and Mary Lou Hoeft  
\*Inga M. Holstad  
The Hubbard Foundation

J.E. Dunn Northcentral, Inc.  
\*Ms. Mary Young Janes  
Lloyd and \*Rosie Johnson  
\*Mr. and \*Mrs. Carl W. Jones  
Lucy Jones  
\*Mrs. Lyndon M. King  
KPMG L.L.P.  
\*Mrs. Floyd E. Lasher  
Kathy and Al Lenzmeier  
Lieberman-Okinow Foundation  
Patricia Lund  
Lunds, Incorporated  
Mr. Andrew A. Lynn  
National City Bank Foundation  
Susan and Edwin McCarthy  
William W. McGuire and Nadine M. McGuire Family Foundation  
Alida Messinger  
Print and Drawing Curatorial Council  
Jim and Linda Mitchell  
Jane and John Morrison  
Munsingwear, Inc.  
Mr. and Mrs. Kingsley H. Murphy, Jr.  
Pierro Mussi  
Marilyn and Glen Nelson  
Jane and Thomas Nelson  
Steve and Tamrah Schaller O’Neil  
Mr. and Mrs. John G. Ordway, Jr.  
MIA Paintings Council  
David and Mary Parker  
Peavey Company  
Mrs. Hall James Peterson and \*Mr. Hall James Peterson  
The Pew Charitable Trusts  
\*Mrs. John S. Pillsbury, Sr.  
Harriet and Walter Pratt  
Gerald Rauenhorst and Alpha & Omega Family Foundation  
Mr. and Mrs. George McKay Reid  
The Rockefeller Foundation  
John and Lois Rogers  
\*Adele H. Roller  
\*Burton G. Ross and Cynthia Rosenblatt Ross  
Mr. and Mrs. Lawrence Rubin  
\*Mr. Fred R. Salisbury  
Joan and Arthur R. Schulze  
The Shared Fund  
Dr. Werner Simon and Madeline Simon  
Harriet and Edson Spencer Fund of The Minneapolis Foundation  
Helmut F. Stern  
Martha and \*Harry Stimpson  
Strangis Family Fund of The Minneapolis Foundation

Walter Stremel  
Mr. and Mrs. Sheldon S. Sturgis  
Tennant Foundation  
The Toro Company  
John F. and Susan B. Ullrich  
The Valspar Corporation  
Joanne and Philip Von Blon  
Waldorf Corporation  
The Wallin Foundation—Maxine and Winston Wallin  
The WEM 2000 Foundation Fund of the Dorsey & Whitney Foundation  
Nancy and Ted Weyerhaeuser  
Windgate Charitable Foundation  
John and Renata Winsor Fund of The Minneapolis Foundation  
Mike and Penny Winton  
Wheaton Wood

Patrons

Cumulative support of \$50,000 to \$149,999

Anonymous (4)  
Accenture  
The Martin S. Ackerman Foundation  
Chloe Ackman  
\*Elizabeth C. Adams  
ADC Telecommunications  
The Advance Foundation, Inc.  
Linda and Steve Ahlers  
Alden C. Buttrick Trust  
Alice M. O’Brien Foundation  
Alliance Capital Management  
Allianz Life Insurance Company of North America  
The American Federation of Arts  
Anchor Bank  
Elmer L. and Eleanor J. Andersen Foundation  
Andersen Foundation  
Steven M. Andersen  
Margaret W. Anderson  
Mrs. William R. Anderson, Jr.  
Susan and Richard Anderson  
\*Bob and Janet Andrews  
\*Sewell D. Andrews  
Pete and Margie Ankeny  
Walter C. Annenberg Foundation  
Mr. and Mrs. Peter W. Anson  
Edward and Eleanor Asplin  
Jo and Gordon Bailey  
The Baillon Foundation, Inc.  
Baker Foundation  
Richard G. and Mary Lyn Ballantine  
\*Mrs. Lyman Barrows

\*Kenneth Barry  
The Bayport Foundation  
Marilyn and Frank Beddor  
\*Elinor Watson Bell  
Mrs. Samuel H. Bell and \*Mr. Samuel H. Bell  
Carol and Judson Bemis, Jr.  
Martha and Frank Bennett  
Marilyn C. Benson  
Michael and Ann Birt  
David and Shari Boehnen  
\*Mrs. Walter R. Bollinger  
\*Mr. Norman B. Mears  
Sheila and Michael Bonsignore  
Boss Foundation  
Mary S. Bowman  
Ruth and Elliot Brebner  
Briggs and Morgan  
Allen Brookins-Brown  
Mr. and Mrs. Conley Brooks, Sr.  
John H. Buelow  
Carol and \*M. Boyd Burton  
Mr. Paul Butler  
Robert and Gail Buuck, Buuck Family Foundation  
Mrs. Robyn Campbell  
Joan and Gary Capen  
Susan and James R. Cargill II  
Mr. and Mrs. Kenneth S. Carpenter  
Darlene J. and Richard P. Carroll  
\*Mr. C. M. Case, Jr. and \*Mrs. C. M. Case, Jr.  
CME-KHBB Advertising  
Art and Anne Collins  
Jill Collins and John Thillman  
Tom and Phyllis Colwell  
Jeanne and Burt Corwin  
Ms. Margaret Coudron  
Sage and John Cowles  
Mr. and Mrs. David Crosby  
\*Mrs. Elizabeth L. Crosby  
Kenneth and Betty Jayne Dahlberg  
Martha and John Daniels  
John and Mary Lou Dasburg  
David Winton Bell Foundation  
Mrs. Julius E. Davis  
Mr. and Mrs. Bruce C. Dayton  
David and Vanessa Dayton  
Eric Dayton  
Bob and Joanie Dayton  
Dellwood Foundation, Inc.  
\*William C. and Corrine Dietrich  
Mr. Jim Dine  
Donald Weesner Charitable Trust  
Mrs. Irene S. Donaldson  
\*Frances V. Doneghy

Mike and Kathy Dougherty  
Dr. James J. and Maureen O. Duffey  
\*Anne de’Uribe Echebarria  
Enron Foundation  
Fannie Mae Foundation  
Ferndale Foundation  
Lisa A. Ferris  
Benjamin and Rebecca Field  
\*Mr. and \*Mrs. Israel D. Fink  
David and Margene B. Fox  
\*Clarence G. Frame  
The Fredrikson & Byron Foundation  
G & K Services, Inc.  
Skip and Barbara Gage  
Geoffrey and Kelly Gage  
Mr. and Mrs. Howard Gelb  
Gary L. Gliem  
Linda and Jack Goldenberg  
Goldman, Sachs and Company  
Barbara and Mike Goldner  
Mr. Alan Goldstein  
Gerald and Virginia Gordon  
Mr. and \*Mrs. Bernard M. Granum  
Gray Plant Mooty Foundation  
Stanley B. Gregory Fund of The Minneapolis Foundation  
Greystone Foundation  
Jerry and Kathleen Grundhofer  
Jack and Beverly Grundhofer  
Lois Hall  
Rosalie Heffelfinger Hall Fund of The Minneapolis Foundation  
Ruth E. Hanold  
Mrs. Philip B. Harris  
Haworth Marketing & Media Company  
Don and \*Arlene Helgeson  
Richard L. Herreid  
Hersey Foundation  
William R. Hibbs Family  
John and Karen Himle  
Gerald D. Hines Interests  
Sue and Bill Hodder Family Fund of The Minneapolis Foundation  
Susan S. and Duane D. Hoff  
Orville C. Hognander  
\*Mr. John M. Hollern  
Patricia and Thomas Holloran  
John and Robyn Horn  
Hella Mears and William Hueg, Jr.  
Somerset Foundation—Hella Mears Hueg and Bill Hueg  
Andy and Carole Hunter  
Joan and Dean Hutton  
IBM Corporation

Irene Hixon Whitney Family Fund of The Minneapolis Foundation  
Lana Isaacson and Tom Bogaert  
Commemorative Association for the Japan World Exposition (1970)  
Knight Foundation  
Emily and George R.A. Johnson  
Mr. James A. Johnson and Ms. Maxine Isaacs  
\*Paul C. Johnson, Jr.  
Mrs. Edwin M. Johnston  
Kathleen and Douglas Jones  
Nobuko Kajitani  
Dr. Markle and \*Charlotte Karlen  
Mrs. Stephen F. Keating  
Michele and Rob Keith  
Miriam and Erwin Kelen  
Kidder, Peabody & Co., Incorporated  
Dr. Mark K. Kim  
\*Mrs. Preston King and \*Mr. Preston King  
Bob and Margee Kinney  
Mr. Henry Kinsell  
Drs. Lee and Tillie Kitzenberg  
Mrs. Theodora H. Lang  
Joan and Joe Lapensky  
Leonardo Lapicirella  
David and Randy Lebedoff  
Wellington Lee  
Kiyoko Lerner  
Ward B. and Susan E. Lewis  
Winston R. Lindberg M.D.  
Patricia and D. Kenneth Lindgren  
Lindquist & Vennum P.L.L.P.  
Lowry Hill  
David Lubben and Nancy Kwam  
Kathleen and Kenneth Macke  
Malt-O-Meal Company  
Mardag Foundation  
Asher and Vera Margolis  
Marquette Bancshares, Inc.  
Marsh USA Inc.  
The Martin Foundation, Inc.  
Jim and \*Chloe Massie  
Dennis and Gail Mathisen  
Mayo Clinic  
Walt McCarthy and Clara Ueland  
\*Mrs. James McGowan  
McKinsey & Company, Inc.  
Deborah and Pierce McNally  
Mr. Donald McNeely  
McQuay-Perfex, Incorporated  
M. D. and Mary McVay  
MetLife Foundation  
Dr. Michael B. Miller

Lucy and Robert Mitchell  
Dr. Alfred Moir  
Sassan Mokhtarzadeh  
\*Dr. Daniel Moos and \*Mrs. Catherine Moos  
\*Margaret Morris  
Dr. and \*Mrs. Angus W. Morrison  
Oak Grove Foundation—John L. Morrison  
MSP Communications  
Barry Murphy and Rosemary Dunbar  
Elizabeth B. Myers  
\*Mrs. Winston B. Newell  
John and Shirley Nilsen  
James and Jo Ann Nordlie  
Jack and Gretchen Norqual  
Norstan, Inc.  
\*Mr. and Mrs. Richardson B. Okie  
Old Dutch Foods, Inc.  
John and Cindy Olson  
Onan Family Foundation  
Constance S. Otis  
Park Dental  
Mrs. James R. Paul  
\*Mrs. George T. Pennock  
The Pentair Foundation  
Nancy McGlynn Phelps and James J. Phelps  
Edward D. Pierson and \*Nancy Rogers Pierson  
\*Corinne G. Pillsbury  
\*Kitty and \*John Pillsbury  
Sally and George Pillsbury  
Sally Boyd Polk  
Dr. Robert John Poor  
The Principal Financial Group  
The Prudential Insurance Company of America  
Gene Quintana  
Rahr Foundation  
Rauenhorst Family Foundation  
Elie and Bob Reid  
Ruth and \*Raymond Reister  
Allan Rhoades  
Sharon and Bill Richardson  
Mrs. Patricia Ringer  
Jeannine M. Rivet  
Beverly J. and John A. Rollwagen Fund of The Minneapolis Foundation  
RSP Architects Ltd.  
Samuel H. Kress Foundation  
Earl S. and Barbara Flanagan Sanford  
Sarah-Maud W. Sivertsen Charitable Trust  
Patty and Barney Saunders  
\*Mr. and \*Mrs. John R. Savage  
Fred and Virginia Scheel

Mrs. Hannes Schroll  
Max R. Schweitzer  
Securian Foundation, supported by Securian Financial Group and its affiliates, Minnesota Life, Advantus Capital Management and Securian Trust  
Mrs. Robert Semsch  
Dr. Sidney Shapiro  
Silicon Graphics  
Roger and Michele Sit  
\*Margaret H. Skoglund  
Ella and Dick Slade  
\*Mrs. Lee H. Slater  
Mae L. Smith  
\*Loring M. Staples Fund of The Minneapolis Foundation  
Deb Davenport and Stew Stender  
\*Mrs. Ruth Bovey Stevens  
Glenda and Richard Struthers  
James Tigerman  
Touche Ross and Company  
Emily Anne and Gedney Tuttle  
\*Thyrza Tyrrell  
U.S. Bancorp Asset Management  
U.S. Trust Company  
Mary W. Vaughan Fund of The Minneapolis Foundation  
Von Blon Family Charitable Foundation  
Archie D. and Bertha H. Walker Foundation  
Ruth and David Waterbury  
Mrs. Frederick O. Watson  
WCCO Radio, WCCO Television, WLTE FM  
Weiser Family Foundation  
Marjorie and Irving Weiser  
Wenger Foundation  
Clarke Wescoe  
Betsy and David Weyerhaeuser  
Whitney Foundation  
Helen and J. Kimball Whitney  
Mrs. David S. Williams  
\*Mr. and \*Mrs. Donald Winston  
Mrs. Frederick S. Winston  
Mr. and Mrs. Frederick Winston  
The Charles J. and Henrietta McDonald Winton Fund  
\*Mr. and \*Mrs. Robert C. Winton  
Elayne and Marvin Wolfenson  
WorldCom  
Zelle Charitable Trust  
Ann and \*Louis Zelle  
Charles and Julie Zelle  
\*Steven and \*Rita Zellmer  
Ziegler Inc.



FINANCIAL STATEMENTS

Minneapolis Institute of Arts

Condensed Statement of Financial Position	As of June 30, 2006	As of June 30, 2005
Assets		
Cash and cash equivalents	\$ 9,924,722	\$ 18,537,571
Accounts receivable	8,000,073	7,508,252
Inventories and other assets	340,288	370,074
Restricted cash	1,666,686	1,070,631
Loan escrow fund	123,736	8,434,437
Pledges receivable	18,956,263	16,946,047
Investments and funds held in trust	164,179,072	155,653,040
Land, buildings, and equipment, net	80,787,486	70,628,598
Total assets	\$ 283,978,326	\$ 279,148,650
Liabilities and Net Assets		
Payables	\$ 5,166,260	7,579,976
Deferred revenue	5,113,065	5,156,984
Notes payable	13,060,000	23,630,949
Total liabilities	23,339,325	36,367,909
Total net assets	260,639,001	242,780,741
Total liabilities and net assets	\$ 283,978,326	\$ 279,148,650
Condensed Statement of Operations		
	For the year ended	
	June 30, 2006	June 30, 2005
Operating Revenue		
Private contributions	\$ 5,801,396	5,720,642
Government support	9,335,382	8,703,548
Program activities	1,538,718	1,695,309
Endowment draw for operations	3,869,106	3,907,687
Other income	857,992	1,172,131
Net assets released from restrictions for operations	439,562	933,837
Total operating revenue	\$ 21,842,156	\$ 22,133,154
Operating Expenses		
Curatorial and exhibitions	\$ 12,747,308	11,967,888
Administration and development	7,827,007	8,302,131
Depreciation	890,000	865,000
Other	747,791	876,069
Total operating expenses	\$ 22,212,106	\$ 22,011,088
Change in unrestricted net assets from operations	(369,950)	122,066
Board-designated transfer for strategic initiatives	404,077	(79,235)
Net income after board-designated transfer for strategic initiatives	\$ 34,127	\$ 42,831

The condensed statement of financial position and the condensed statement of operations are derived from the MIA’s financial statements as of June 30, 2006, which have been audited by KPMG LLP, independent auditors, whose report expressed an unqualified opinion on those financial statements. A copy of the full audit report is available from the MIA’s finance department.

BOARD OF TRUSTEES 2005-2006	2006 Elective Trustees
Alfred Harrison, <i>Chair</i>	Linda Ahlers
William M. Griswold, <i>Director and President</i>	Leslie Altman
Brian E. Palmer, <i>First Vice Chair</i>	Kim Anderson
Burton D. Cohen, <i>Vice Chair</i>	Ford W. Bell
Diane P. Lilly, <i>Vice Chair</i>	Roberta Mann-Benson
Siri Marshall, <i>Secretary</i>	Michael Boardman
Samuel McCullough, <i>Treasurer</i>	David Boehnen
Michele L. Callahan, <i>Assistant Secretary</i>	Eric Dayton
Patricia J. Grazzini, <i>Assistant Treasurer</i>	Curtis Dunnavan
	Jane Emison
	Lisa Ferris
	Margene Fox
	Michael Francis
	Kelly Gage
	William M. Griswold
	Beverly Grossman
	Jerry Grundhofer
	Kevin Hart
	John Himle
	Susan Hoff
	John Huss
	Joann Jundt
	Elliot Kaplan
	Diane P. Lilly
	Mary Carroll Linder
	Barbara Longfellow
	David Lubben
	Nivin MacMillan
	Siri Marshall
	Sam McCullough
	Lucy Crosby Mitchell
	Barry Murphy
	Moe Nozari
	Stephen N. Oesterle
	John Olson
	Tamrah Schaller O’Neil
	Brian Palmer
	Linda Perlman
	Mary Pohlاد
	Dar Reedy
	Roger Sit
	Michael Snow
	Stewart Stender
	Rich Torres
	Elizabeth Weyerhaeuser

Life Trustees
John E. Andrus, III
Marvin Borman
Sandra K. Butler
Burton D. Cohen
Bruce B. Dayton
W. John Driscoll
Alfred Harrison
Myron Kunin
David M. Lebedoff
Clinton Morrison
Bob Ulrich

Trustees by Virtue of Office
R. T. Rybak, <i>Minneapolis Mayor</i>
Scott Dibble, <i>State Senator</i>
Gen Olson, <i>State Senator</i>
Margaret Anderson Kelliher, <i>State Representative</i>
Erik Paulson, <i>State Representative</i>
Randy Johnson, <i>Hennepin County Commissioner</i>
Mary Merrill Anderson, <i>Minneapolis Park and Recreation Board Commissioner</i>
Glenda Struthers, <i>Friends President</i>







This publication is produced by the Development and External Affairs divisions of the Minneapolis Institute of Arts.

William M. Griswold,  
*Director and President*

Patricia J. Grazzini,  
*Associate Director and Chief Operating Officer*

Joan Grathwol Olson,  
*Director of Development*

Anne-Marie Wagener,  
*Director of External Affairs*

Gayle Jorgens,  
*Director of Design and Editorial*

Diane Richard, *Project Editor*

Jodie Ahern, *Project Copy Editor*

Jill Blumer, *Graphic Designer*

Elizabeth Mullen, *Graphic Designer*

R. Patrick Atherton, *Production Technician*

Amanda Stolle,  
*Production Coordinator*

Cheryl Storevik, *Administrative Assistant*

Kristina Hoeschen, *Campaign Coordinator*

Dan Dennehy,  
*Chief Photographer*

Donna Kelly, *Assistant Photographer*

Charles Walbridge,  
*Photographer*

Heidi Quicksilver,  
*Digital Imaging Specialist*

*Contributing Photographers:*

Andy King: Page 22, middle; 24, bottom three rows

Ann Marsden: Cover, third from top; page 4; 6; 7; 8, middle left; 9, top left, bottom left, bottom right; 22, bottom; 24, top

Philip Prowse: Cover, bottom; inside front cover; page 1; 3

Scott Streble: Page 2, top; 5, bottom; 8, top, middle right, bottom left, bottom right; 9, top right, middle; 14, bottom; 23

Dawn Villela: Page 21

GLS Printing Inc., *Printer*

Minneapolis Institute of Arts is an Equal Opportunity/ Affirmative Action Employer.

© 2006 Minneapolis Institute of Arts

**MUSEUM INFORMATION**

**Minneapolis Institute of Arts**  
**2400 Third Avenue South**  
**Minneapolis, Minnesota 55404**  
**[www.artsmia.org](http://www.artsmia.org)**

**24-HOUR MUSEUM INFORMATION (612) 870-3200**

**Toll-free**  
**1-888-642-2787**  
**FAX (612) 870-3253**  
**TDD (612) 870-3132**

**Members' Hotline**  
**(612) 870-6323, or toll-free at 1-888-642-2787**

**Board of Trustees**  
**(612) 870-3007**

**Curatorial Councils**  
**(612) 870-3131**

**Friends of the Institute**  
**(612) 870-3045**

**Membership and Development Office**  
**(612) 870-3030**

**Visitor and Member Center**  
**(612) 870-3131**

**Art Research and Reference Library**  
**(612) 870-3117**

**Print Study Room**  
**(612) 870-3105, by appointment.**

**TOURS**

**Public Tours**  
**(612) 870-3131**

**Custom Tours**  
**(612) 870-3140**

**Audio Tours available.**

**HOURS**

**10 a.m. to 5 p.m., Tuesday, Wednesday, Friday, and Saturday**  
**10 a.m. to 9 p.m. Thursday**  
**11 a.m. to 5 p.m. Sunday**  
**Closed Monday.**

**The museum's 24th Street grand entry is open during the summer months.**

**MUSEUM SHOP**  
**(612) 870-3100**

**Open during museum hours.**

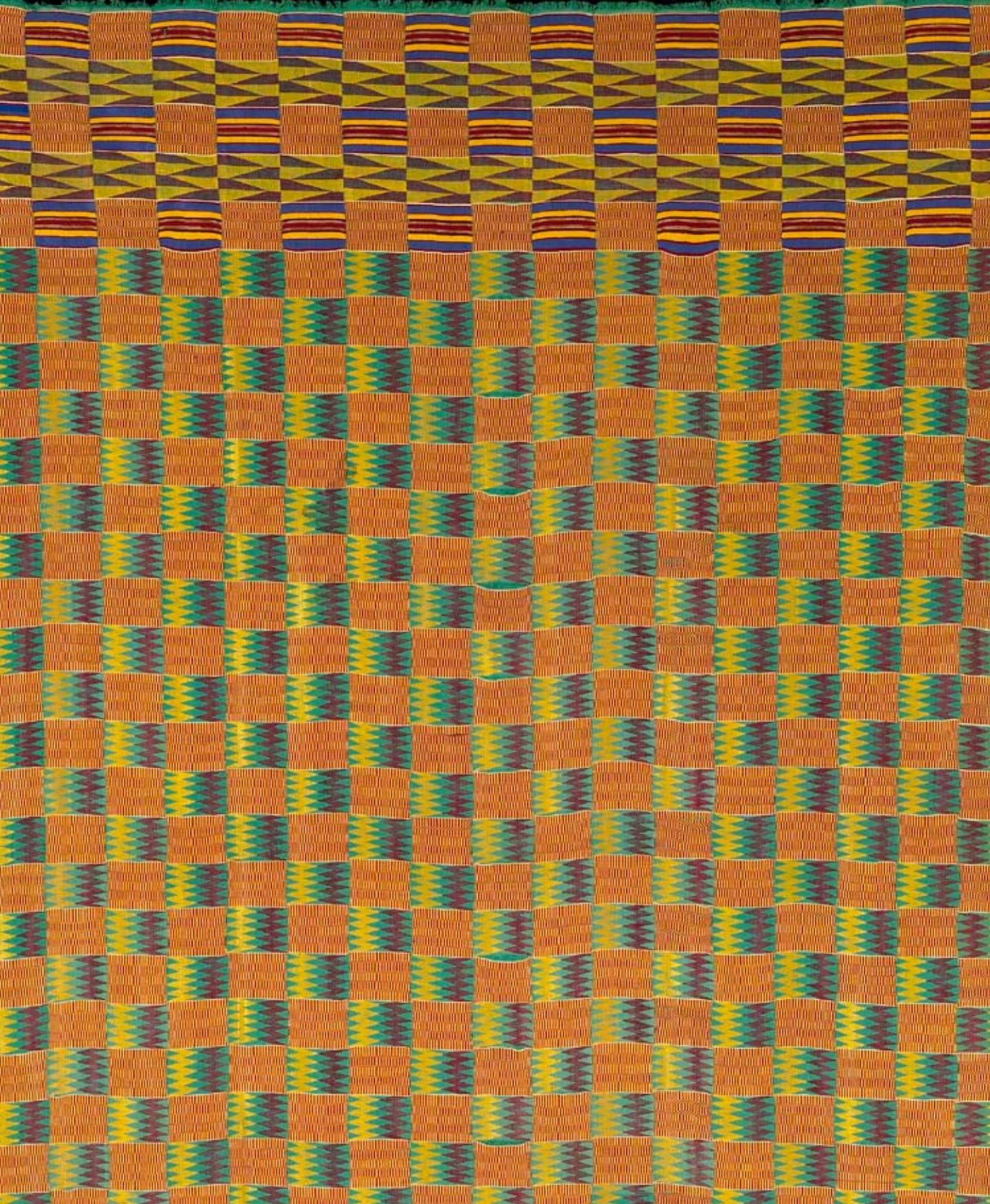
**PURCELL-CUTTS HOUSE**

**Open the second weekend of each month by reservation, 10 a.m. to 2 p.m. Saturday; noon to 3 p.m. Sunday. Call (612) 870-3131 to reserve.**

**The Minneapolis Institute of Arts is a free museum operated for the benefit of the general public.**

**This report is also available on the MIA's Web site, [www.artsmia.org](http://www.artsmia.org)**

**For additional copies, please call the Visitor and Member Center at (612) 870-3131, TDD (612) 870-3132.**



Asante/Akan culture; Ghana, Africa; **man's cloth** (detail), 20th century; synthetic, silk; gift of funds from the Regis Foundation.

**Front cover credits**

- Top: Visitors admire the museum's first car, a Tatra T87, now on view in the new Wells Fargo Modernist Design galleries. Hans Ledwinka, Austrian (1878-1967), **Tatra T87**, 1948 (designed 1936), all-metal *monococque* body, manufacturer: Ringhoffer-Tatra-Werke AG, Czechoslovakia, acquired with funds from the Regis Foundation.
- Middle/top: Severin Roesen, American (b. Germany) c. 1815-71, **Abundant Fruit** (detail), c. 1858, gift of Don and Diana Lee Lucker.
- Middle/bottom: Visitors view "The Surreal Calder," which opened in the Target Gallery concurrent to the MIA's Grand Opening Celebration in June.
- Bottom: The Target Wing, designed by architect Michael Graves, expanded the MIA's gallery, research, and events space by nearly forty percent. It opened to the public on June 11, 2006.





Nearly 5,000 visitors attended the museum on July 14, 2005, the anniversary of Bastille Day, for the opening of the **Grand Salon** from the **Hôtel Gaillard de La Bouëxière**. One of the most intact interiors from 18th-century Paris, this elegant period room was painstakingly conserved and restored. Installation of the **Grand Salon** was entirely funded through the generosity of the Groves Foundation and Carolyn and Franklin Groves.



2400 Third Avenue South  
Minneapolis, Minnesota 55404  
[www.artsmia.org](http://www.artsmia.org)